

**BALDOR • RELIANCE**

---

# Customer information packet

## ZDVSCP4110T

40HP, 1775RPM, 3PH, 60HZ, 324T, 1254M, TEFC, F1

Class - None

Division - Not Applicable

## Specifications

Enclosure	TEFC
Frame	324T
Frame Material	Iron
Frequency	60.00 Hz
Haz Area Class and Group	None
Haz Area Division	Not Applicable
Motor Letter Type	Three Phase
Output @ Frequency	40.000 HP @ 60 HZ
Phase	3
Synchronous Speed @ Frequency	1800 RPM @ 60 HZ
Voltage @ Frequency	460.0 V @ 60 HZ 230.0 V @ 60 HZ
Agency Approvals	CSA UR
Ambient Temperature	40 °C
Auxiliary Box	NO AUXILLARY BOX
Auxiliary Box Lead Termination	None
Base Indicator	Rigid
Bearing Grease Type	Polyrex EM (-20F +300F)
Blower	None
Current @ Voltage	102.000 A @ 208.0 V 48.000 A @ 460.0 V 96.000 A @ 230.0 V
Design Code	A
Drip Cover	No Drip Cover
Duty Rating	CONT
Efficiency @ 100% Load	94.1 %
Electrically Isolated Bearing	Not Electrically Isolated
Enclosure Modification	Severe Duty Features
Feedback Device	TACHOMETER
Front Face Code	Standard
Front Shaft Indicator	None

## Part detail

Revision	L
Type	AC
Mech. spec.	12G537
Base	
Status	PRD/A
Elec. spec.	12WGY276
Layout	12LYG537
Eff. date	11-03-2025
CD Diagram	CD0180
Poles	04
Leads	9#8
Proprietary	False
Created date	03-14-2017

Heater Indicator	No Heater
High Voltage Full Load Amps	48.0 a
Insulation Class	F
Inverter Code	Inverter Duty
KVA Code	H
Lifting Lugs	Standard Lifting Lugs
Locked Bearing Indicator	Locked Bearing
Max Speed	2700 rpm
Motor Lead Exit	Ko Box
Motor Lead Quantity/Wire Size	9 @ 8 AWG
Motor Lead Termination	Flying Leads
Motor Standards	NEMA
Motor Type	1254M
Mounting Arrangement	F1
Number of Poles	4
Overall Length	33.14 IN
Power Factor	82
Product Family	Chemical Processing (Not DC)
Pulley End Bearing Type	Ball
Pulley Face Code	Standard
Pulley Shaft Indicator	Standard
Rodent Screen	None
Service Factor	1.00
Shaft Diameter	2.125 IN
Shaft Extension Location	Pulley End
Shaft Ground Indicator	No Shaft Grounding
Shaft Rotation	Reversible
Shaft Slinger Indicator	Shaft Slinger
Speed	1775 rpm
Speed Code	Single Speed
Starting Method	Direct on line
Thermal Device - Bearing	None
Thermal Device - Winding	Normally Closed Thermostat
Vibration Sensor Indicator	No Vibration Sensor

Winding Thermal 1	None
Winding Thermal 2	None

---

**Nameplate**

<b>NP3303L</b>			
<b>CAT NO</b>	ZDVSCP4110T		
<b>SPEC.</b>	12G537Y276Z1		
<b>FRAME</b>	324T	<b>HP</b>	40 TE
<b>VOLTS</b>	230/460		
<b>MAG CUR</b>	39/19.5	<b>FLA</b>	96/48
<b>RPM</b>	1775	<b>RPM MAX</b>	2700
<b>HZ</b>	60	<b>PH</b>	3 <b>CLASS</b> F
<b>SER.F.</b>	1.00	<b>SL HZ</b>	0.85
<b>NEMA-NOM-EFF</b>	94.1	<b>WK2</b>	7.19
<b>RATING</b>	40C AMB-CONT		
<b>DE BRG</b>	6312	<b>ODE BRG</b>	6312
<b>CC</b>	010A	<b>SN</b>	
	1.5:1 CHP PWM		
	1000:1 CT, 1000:1 VT		

<b>NP0090L</b>	
<b>FRONT</b>	6312
<b>PULLEY</b>	6312
<b>LUBRICATE WITH</b>	
<b>GREASE</b>	POLYREX EM

**AC Induction Motor Performance Data**

Record # 51423

Typical performance - not guaranteed values

<b>Winding: 12WGY276-R027</b>		<b>Type: 1254M</b>		<b>Enclosure: TEFC</b>	
<b>Nameplate Data</b>			<b>460 V, 60 Hz: High Voltage Connection</b>		
<b>Rated Output (HP)</b>	40	<b>Full Load Torque</b>	118 LB-FT		
<b>Volts</b>	230/460	<b>Start Configuration</b>	direct on line		
<b>Full Load Amps</b>	96/48	<b>Breakdown Torque</b>	386 LB-FT		
<b>R.P.M.</b>	1775	<b>Pull-up Torque</b>	193 LB-FT		
<b>Hz</b>	60 <b>Phase</b>	3	<b>Locked-rotor Torque</b>	216 LB-FT	
<b>NEMA Design Code</b>	A	<b>KVA Code</b>	H	<b>Starting Current</b>	338 A
<b>Service Factor (S.F.)</b>	1	<b>No-load Current</b>	19.9 A		
<b>NEMA Nom. Eff.</b>	94.1	<b>Power Factor</b>	82	<b>Line-line Res. @ 25°C</b>	0.14898 Ω
<b>Rating - Duty</b>	40C AMB-CONT		<b>Temp. Rise @ Rated Load</b>	54°C	
			<b>Locked-rotor Power Factor</b>	27	
			<b>Rotor inertia</b>	7.19 LB-FT <sup>2</sup>	

**Load Characteristics 460 V, 60 Hz, 40 HP**

<b>% of Rated Load</b>	<b>25</b>	<b>50</b>	<b>75</b>	<b>100</b>	<b>125</b>	<b>150</b>
<b>Power Factor</b>	47	69	78	83	85	85
<b>Efficiency</b>	90.1	93.5	94.2	94.2	93.8	93.1
<b>Speed</b>	1793.5	1788	1782.5	1776.6	1770.7	1764.1
<b>Line amperes</b>	22.9	29.5	38.4	48.1	59.2	70.8

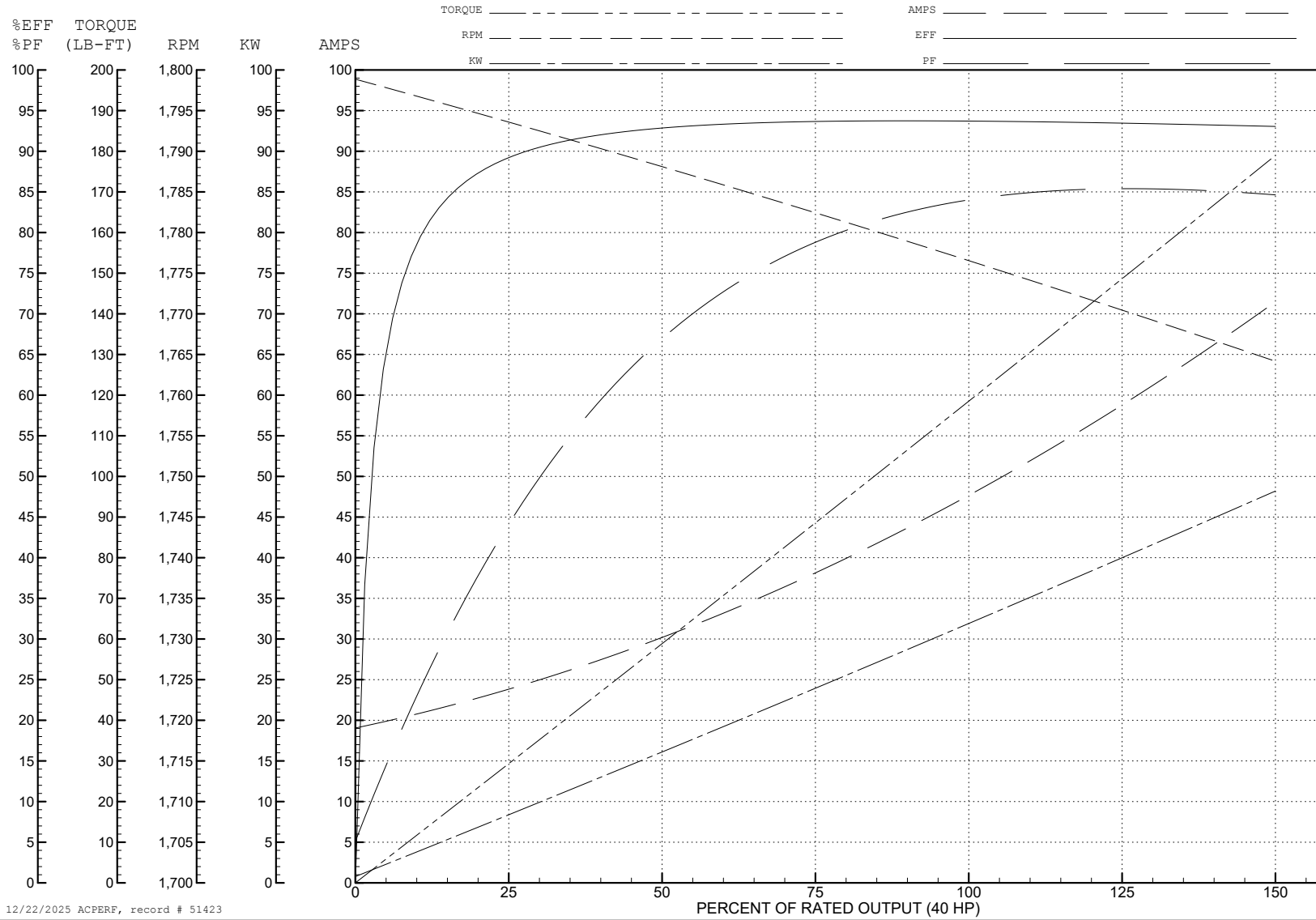
ABB Motors and Mechanical Inc.

WINDING # 12WGY276

Typical performance - not guaranteed values.

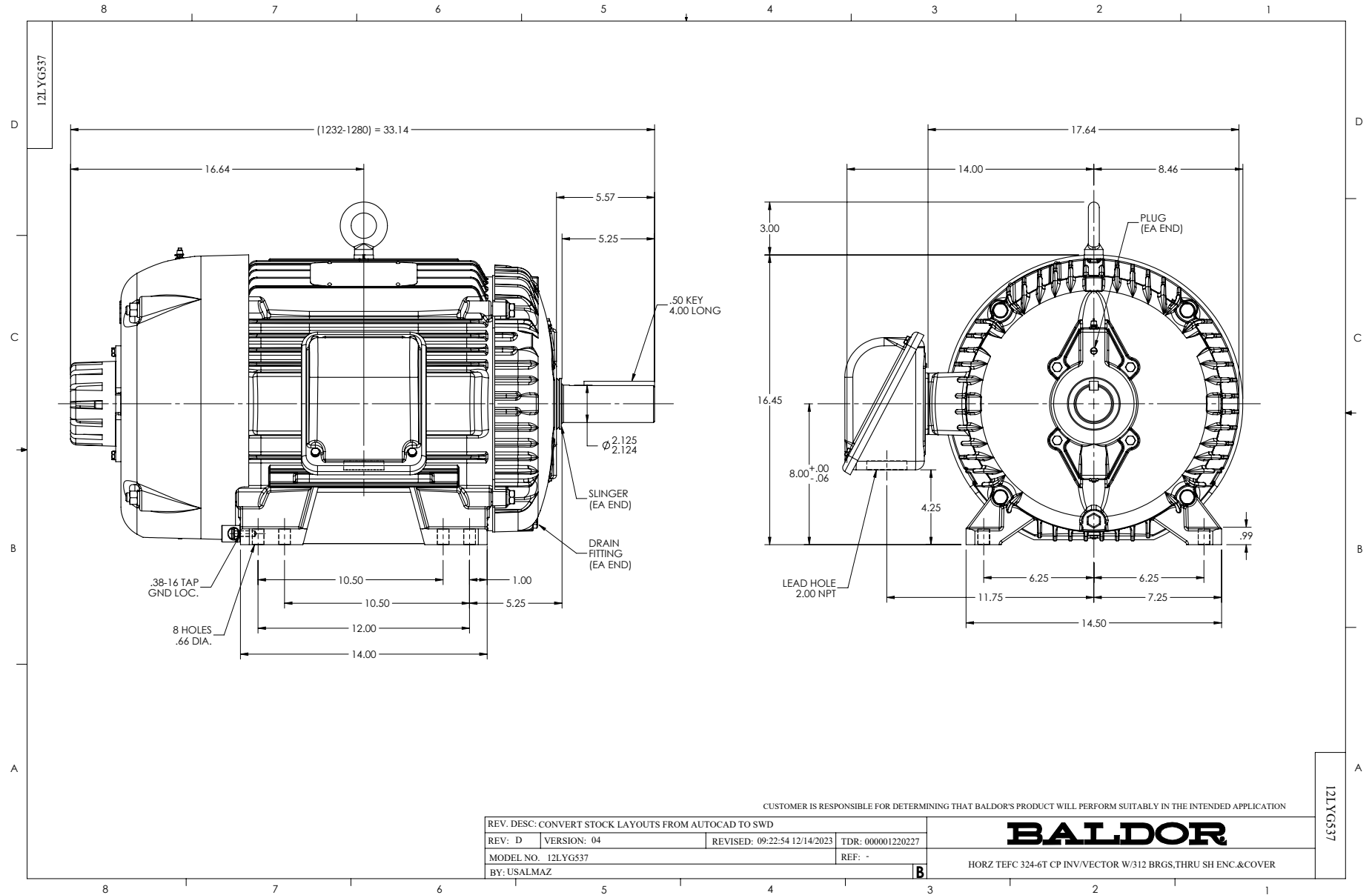
40 HP 3 PH 60 HZ 1775 RPM 460 V 1254M

TORQUES (LB-FT): PO=386 PU=193 LR=216 LRA=338

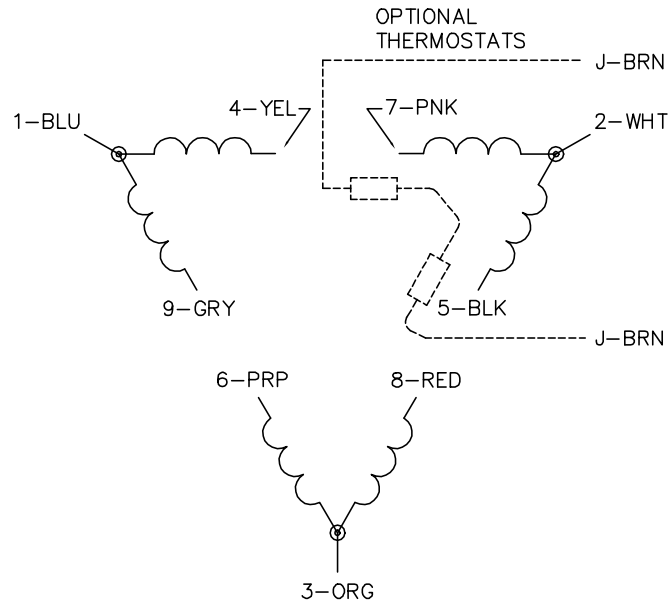


12/22/2025 ACPERF, record # 51423

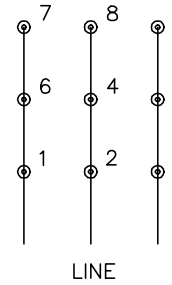




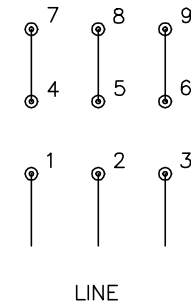
CD0180



LOW VOLTAGE  
(2D)



HIGH VOLTAGE  
(1D)



NOTES:

1. INTERCHANGE ANY TWO LINE LEADS TO REVERSE ROTATION.
2. OPTIONAL THERMOSTATS ARE PROVIDED WHEN SPECIFIED.
3. ACTUAL NUMBER OF INTERNAL PARALLEL CIRCUITS MAY BE A MULTIPLE OF THOSE SHOWN ABOVE.
4. LEAD COLORS ARE OPTIONAL. LEADS MUST ALWAYS BE NUMBERED AS SHOWN.

CD0180

REV. DESC: ADD CLASS CONN00000007		
REV. LTR: D	VERSION: 01	TDR: 000001099922
FILE: \AAA\00005\148	REVISED: 10: 25: 29 02/19/2019	BY: ENBRIRO
MTL: -	© □	

**BALDOR - RELIANCE®**

3PH, DV, 9 LEADS, DELTA CONNECTION

SH 1 of 1