

BALDOR • RELIANCE

Customer information packet

ZDVSCP3770T

7.5HP, 1770RPM, 3PH, 60HZ, 213TC, 0738M, TEFC

Class - None

Division - Not Applicable

Specifications

Enclosure	TEFC
Frame	213TC
Frame Material	Iron
Frequency	60.00 Hz
Haz Area Class and Group	None
Haz Area Division	Not Applicable
Motor Letter Type	Three Phase
Output @ Frequency	7.500 HP @ 60 HZ
Phase	3
Synchronous Speed @ Frequency	1800 RPM @ 60 HZ
Voltage @ Frequency	230.0 V @ 60 HZ 460.0 V @ 60 HZ
Agency Approvals	CSA UR
Ambient Temperature	40 °C
Auxiliary Box	NO AUXILLARY BOX
Auxiliary Box Lead Termination	None
Base Indicator	Rigid
Bearing Grease Type	Polyrex EM (-20F +300F)
Blower	None
Current @ Voltage	19.000 A @ 230.0 V 20.000 A @ 208.0 V 9.500 A @ 460.0 V
Design Code	A
Drip Cover	No Drip Cover
Duty Rating	CONT
Efficiency @ 100% Load	91.7 %
Electrically Isolated Bearing	Not Electrically Isolated
Feedback Device	RESOLVER
Front Shaft Indicator	No Key Or Flat
Heater Indicator	No Heater
High Voltage Full Load Amps	9.5 a

Part detail

Revision	A
Type	AC
Mech. spec.	07M294
Base	
Status	PRD/A
Elec. spec.	07WGT510
Layout	07LYM294
Eff. date	09-30-2025
CD Diagram	CD0005
Poles	04
Leads	9#14
Proprietary	False
Created date	01-28-2021

Insulation Class	F
Inverter Code	Inverter Duty
KVA Code	J
Lifting Lugs	Standard Lifting Lugs
Locked Bearing Indicator	Locked Bearing
Max Speed	4000 rpm
Motor Lead Quantity/Wire Size	9 @ 14 AWG
Motor Lead Termination	Flying Leads
Motor Standards	NEMA
Motor Type	0738M
Mounting Arrangement	F1
Number of Poles	4
Overall Length	25.03 IN
Power Factor	81
Product Family	Chemical Processing (Not DC)
Pulley End Bearing Type	Ball
Pulley Face Code	C-Face
Pulley Shaft Indicator	Standard
Rodent Screen	None
RoHS Status	ROHS NON-COMPLIANT
Service Factor	1.00
Shaft Diameter	1.375 IN
Shaft Ground Indicator	No Shaft Grounding
Shaft Rotation	Reversible
Shaft Slinger Indicator	Shaft Slinger
Speed	1770 rpm
Speed Code	Single Speed
Starting Method	Direct on line
Thermal Device - Bearing	None
Thermal Device - Winding	Normally Closed Thermostat
Vibration Sensor Indicator	No Vibration Sensor
Winding Thermal 1	None
Winding Thermal 2	None

Nameplate

NP3949			
CAT.NO.	ZDVSCP3770T		
SPEC.	07M294T510Z1		
FRAME	213TC	H.P.	7.5 TE
VOLTS	230/460		
MAG. CUR.	8.6/4.3	F.L. AMPS	19/9.5
R.P.M.	1770	R.P.M. MAX	4000
HZ.	60	PH.	3 CLASS F
SER.F.	1.00	SL HZ	1
NEMA NOM. EFF.	91.7	WK2	0.934
RATING	40C AMB-CONT		
DE	6307	ODE	6206
CC	010A	SN	
	1.5:1 CHP PWM		
	1000:1 CT/VT		

NP VOLTS	230/460	Base Volt	460	WYE CONN EQ CKT OHMS PER PHASE (BASE RATING, 20C)			
NP AMPS	19/9.5	NL AMPS	4.07	R1	0.784	X1	2.650
HP	7.5	Slip (HZ)	1.03	R2	0.464	X2	2.040
BASE SPEED	1769	WK ² (lb-ft ²)	0.934			XM	62.900
PHASE/HZ	3/60						

Rated Full Load Data

	RPM	HP	Torque	Volts	Freq-Hz	Amps
Base Speed	1769	7.5	22.3	460	60	9.4
Max Speed	2653	7.5	14.9	460	90	8.9
CT Min Speed	1,769	0.008	22.3	0.46	0.06	9.4

Load Performance at Base Speed

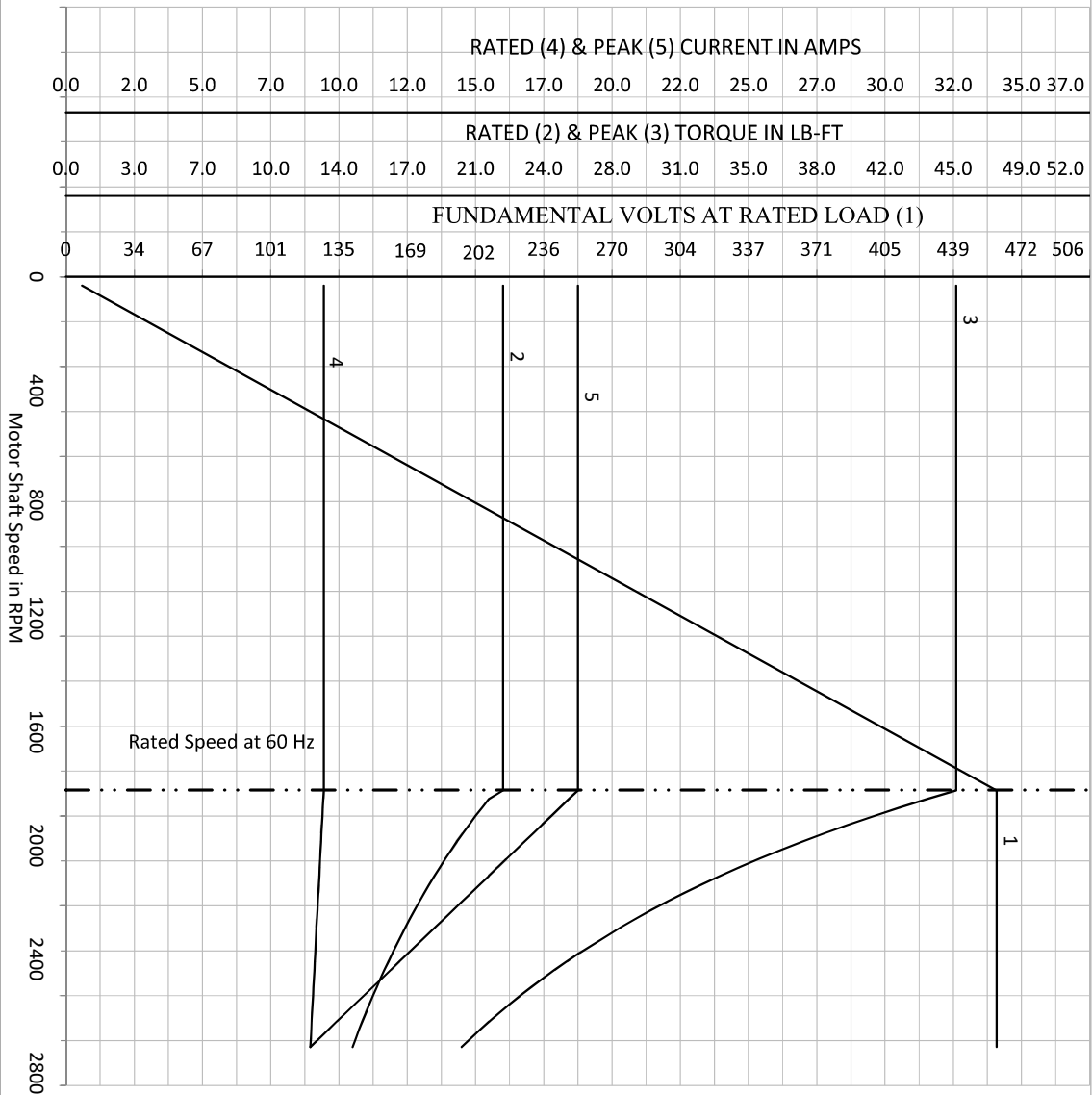
	RPM	HP	Torque	Volts	Freq-Hz	Amps
No Load	1799	0.0	0.0	460	60	4.1
1/4	1792	1.9	5.5	460	60	4.6
1/2	1785	3.7	11.0	460	60	5.8
3/4	1777	5.6	16.6	460	60	7.5
Full Load	1769	7.5	22.3	460	60	9.4
O/L	1734	15.0	45.4	460	60	18.7

Blower Data	Volts	Ph/Hz	FL Amps	LR Amps	Frame	CFM

Remarks: Calculated Data

BALDOR • RELIANCE	DR BY	USBRRANI	A-C MOTOR	07WG1510
	CK BY	CD	PERFORMANCE	
	APP BY	USBRRANI	CURVES	
	DATE	3/21/2025		Record: 86626

NP VOLTS	230/460	Base Volt	460	WYE CONN EQ. CRT OHMS PER PHASE (BASE RATING, 20C)			
NP AMPS	19/9.5	NL AMPS	4.07	R1	0.784	X1	2.650
HP	7.5	Slip (Hz)	1.03	R2	0.464	X2	2.040
BASE SPEED	1769	WK ² (lb-ft ²)	0.934			XM	62.900
PHASE/HZ	3/60						



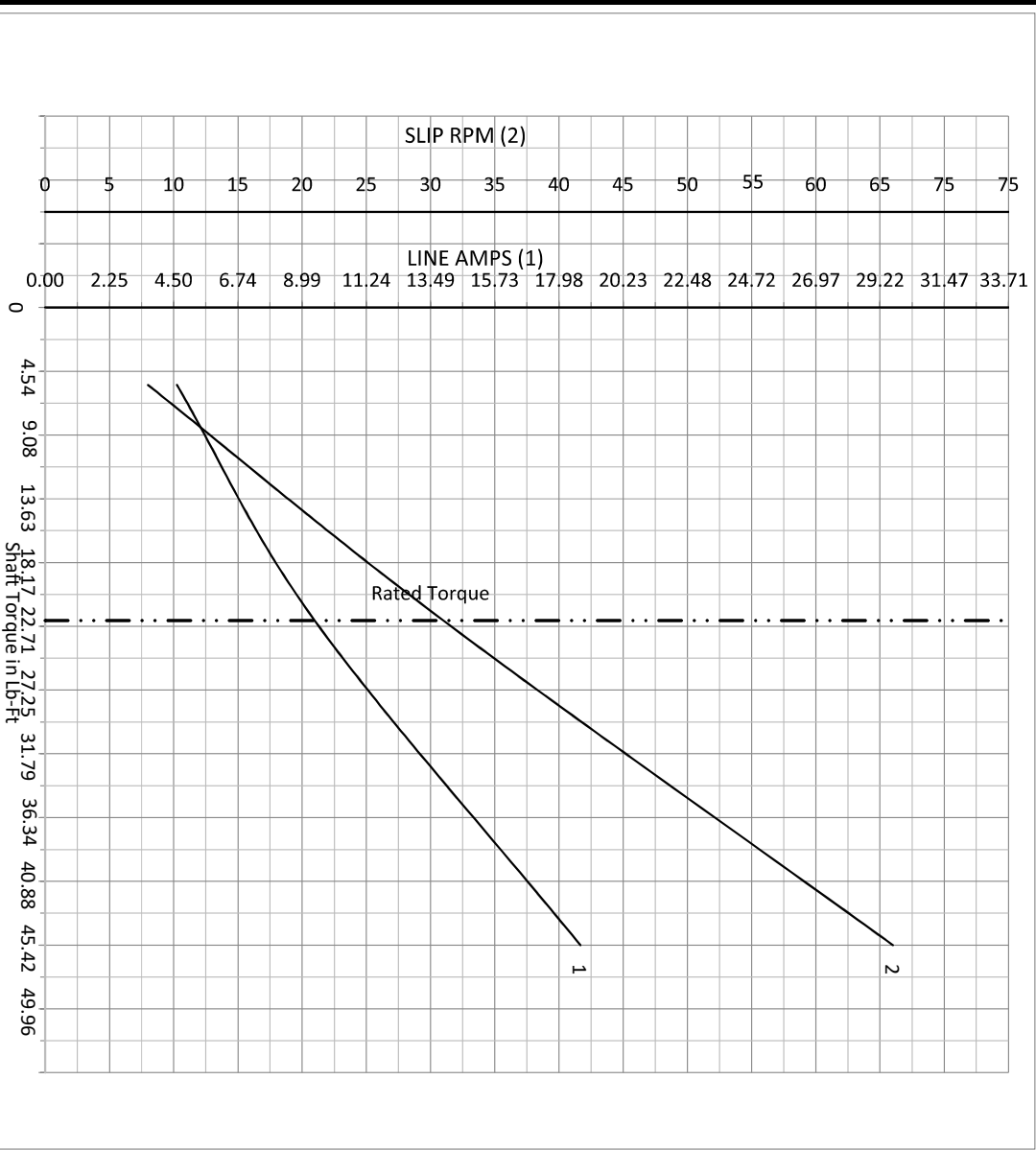
Calculated Data
Data Valid For Nameplate Speed Range only

BALDOR • RELIANCE

DR BY <u>USBRRANI</u>	A-C MOTOR
CK BY <u>CD</u>	PERFORMANCE
APP BY <u>USBRRANI</u>	CURVES
DATE <u>3/21/2025</u>	07WGT510
	Record: 86626

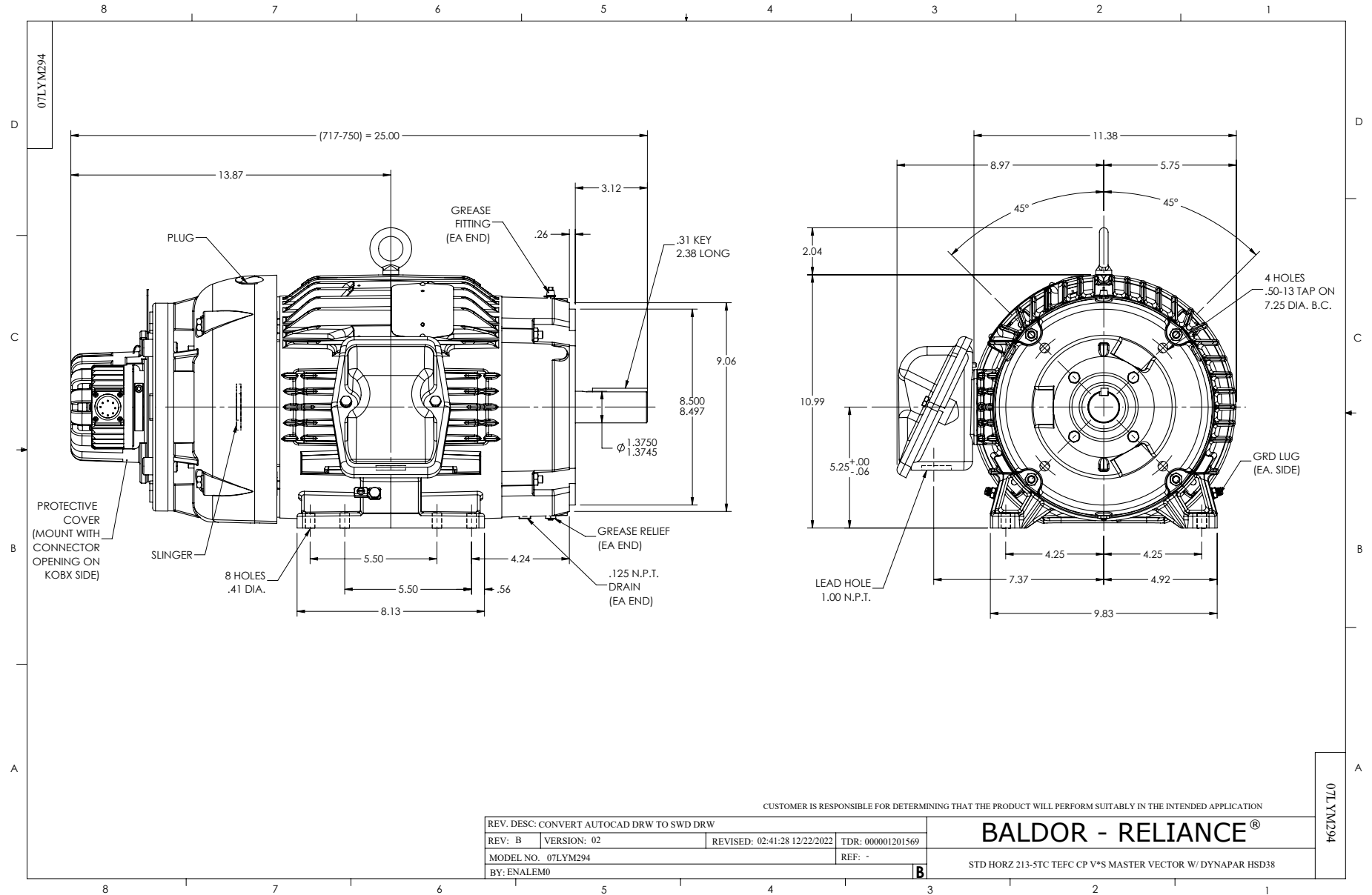
NP VOLTS	230/460	0	0	WYE CONN EQ. CRT OHMS PER PHASE (BASE RATING, 20C)			
NP AMPS	19/9.5	Base Volt	460	R1	0.784	X1	2.650
HP	7.5	NL AMPS	4.07	R2	0.464	X2	2.040
BASE SPEED	1769	Slip (HZ)	1.03	XM			62.900
PHASE/HZ	3/60	WK2 (lb-ft ²)	0.934				

Vector PWM Inverter Duty
Variable Speed AC Motor Curves



Calculated Data
Data Valid For Nameplate Speed Range only

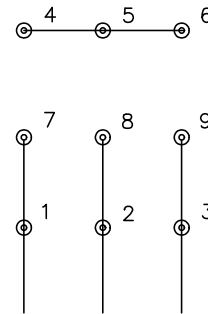
BALDOR • RELIANCE	DR BY	USBRANI	A-C MOTOR PERFORMANCE CURVES	07WGT510
	CK BY	CD		
	APP BY	USBRANI		
	DATE	3/21/2025		Record: 86626



CD0005

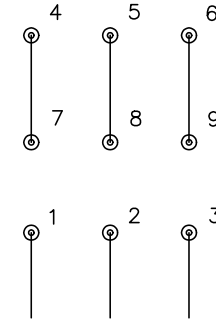


LOW VOLTAGE
(2Y)



LINE

HIGH VOLTAGE
(1Y)



LINE

NOTES:

1. INTERCHANGE ANY TWO LINE LEADS TO REVERSE ROTATION.
2. OPTIONAL THERMOSTATS ARE PROVIDED WHEN SPECIFIED.
3. ACTUAL NUMBER OF INTERNAL PARALLEL CIRCUITS MAY BE A MULTIPLE OF THOSE SHOWN ABOVE.
4. LEAD COLORS ARE OPTIONAL. LEADS MUST ALWAYS BE NUMBERED AS SHOWN.

CD0005

REV. DESC: REVISE TO SHOW OPTIONAL COLORS			
REV. LTR: E	BY: JLP	REVISED: 01/19/99 10:15	TDR: 0171435
S00000		FILE: AAA00005140	MDL: -
		MTL: -	

BALDOR ELECTRIC Co.

3PH, DV, 9 LEADS