

**BALDOR • RELIANCE**

---

# Customer information packet

## XEFRPM28254

25HP, 1800, 460V, HL284T, TEFC, F1

## Specifications

Enclosure	TEFC
Frame	HL284T
Frame Material	Exposed Laminations
Frequency	60.00 Hz
Output @ Frequency	25.000 HP @ 60 HZ
Phase	3
Synchronous Speed @ Frequency	1800 RPM @ 60 HZ
Voltage @ Frequency	460.0 V @ 60 HZ
Agency Approvals	CCSA US NEMA PREMIUM
Auxiliary Box	NO AUXILLARY BOX
Base Indicator	Rigid
Bearing Grease Type	Polyrex EM (-20F +300F)
Constant Torque Speed Range	1-60
Current @ Voltage	25.200 A @ 460.0 V
Duty Rating	CONT
Feedback Device	NO FEEDBACK
Frame Prefix	HL
Heater Indicator	No Heater
High Voltage Full Load Amps	25.2 a
Insulation Class	H
KVA Code	G
Motor Standards	NEMA
Mounting Arrangement	F1
Overall Length	26.38 IN
Product Family	Fan
Pulley End Bearing Type	Ball
Pulley Face Code	Standard
Service Factor	1.15
Shaft Diameter	1.875 IN
Shaft Ground Indicator	No Shaft Grounding
Shaft Rotation	Reversible

## Part detail

Revision	F
Type	AC
Mech. spec.	
Base	
Status	PRD/A
Elec. spec.	LS7018A
Layout	619696-001
Eff. date	04-23-2019
CD Diagram	422927-001
Poles	04
Leads	
Proprietary	False
Created date	05-13-2016

<b>Speed</b>	1800 rpm
<b>Thermal Device - Bearing</b>	None
<b>Thermal Device - Winding</b>	Normally Closed Thermostat

**Nameplate**

**000613007QF**

	<b>DUTY</b>	<b>HP</b>	<b>RPM</b>	<b>AMPS</b>	<b>VOLTS</b>	<b>HZ</b>					
	CONT	25	1800	25.2	460	60					
<b>CAT.NO.</b>	XEFRPM28254		<b>SPEC. NO.</b>		H28-A000-0002						
<b>SER.NO.</b>			<b>FRAME SIZE</b>		HL284T	<b>TYPE PSM</b>					
<b>AMB.</b>	40	<b>S.F.</b>	1.15	<b>ENCL.</b>	TEFC	<b>PH</b>	3	<b>DESIGN</b>	B	<b>CODE</b>	G
<b>NEMA NOM. EFF</b>	95.4		<b>GUARANTEED EFFICIENCY</b>		94.5		<b>POWER FACTOR</b>	95.2		<b>INSUL. CLASS</b>	H
<b>D.E. BRG.</b>	50BC03J30X		<b>O.D.E. BRG.</b>		45BC02J30X						
<b>VPWM INVERTER DUTY @1.0SF</b>	<b>CHP HZ</b>	60-90		<b>CT HZ</b>	1-60		<b>VT HZ</b>	0-60			
	X/T										

---

000692000VY

---

**MEAS OPEN CIRCUIT VOLTAGE**

---

IS  VOLTS AT  RPM.

---

S. O.	FRAME	HP	TYPE	PHASE	HERTZ	RPM
--	HL284T	25	PSM	3	60	1800
VOLTS	AMPS	DUTY	AMB <sup>OC</sup>	INSUL	S.F.	NEMA DESIGN
460	25.8	CONT	40	H	1.15	B
CODE LETTER	ENCL	ROTOR INERTIA (lb-ft <sup>2</sup> )		STATOR RES. @ 25°C OHMS (BETWEEN LINES)		TYPICAL DATA
G	TEFC	1.82		.4081		

**PERFORMANCE**

LOAD	HP	AMPERES	RPM	% POWER FACTOR	% EFFICIENCY
NO LOAD	0	14.4	1800	3.90	N/A
1/4	6.25	11.9	1800	53.5	91.6
2/4	12.5	14.7	1800	83.8	94.8
3/4	18.7	19.9	1800	92.7	95.4
4/4	25.0	25.8	1800	95.2	95.4
5/4	31.2	32.2	1800	95.6	95.1

**SPEED TORQUE**

	RPM	TORQUE (% FULL LOAD)	TORQUE (lb-ft)	AMPERES
LOCKED ROTOR	0	177	129.2	187.1
PULL OUT	1800	253	184.6	94.7
FULL LOAD	1800	100	72.9	25.8

THIS IS A PERMANENT MAGNET MOTOR  
 GENERATED OPEN CIRCUIT LINE-LINE VOLTAGE at 25°C = 20.0 VOLTS PER 100 RPM  
 REMARKS:

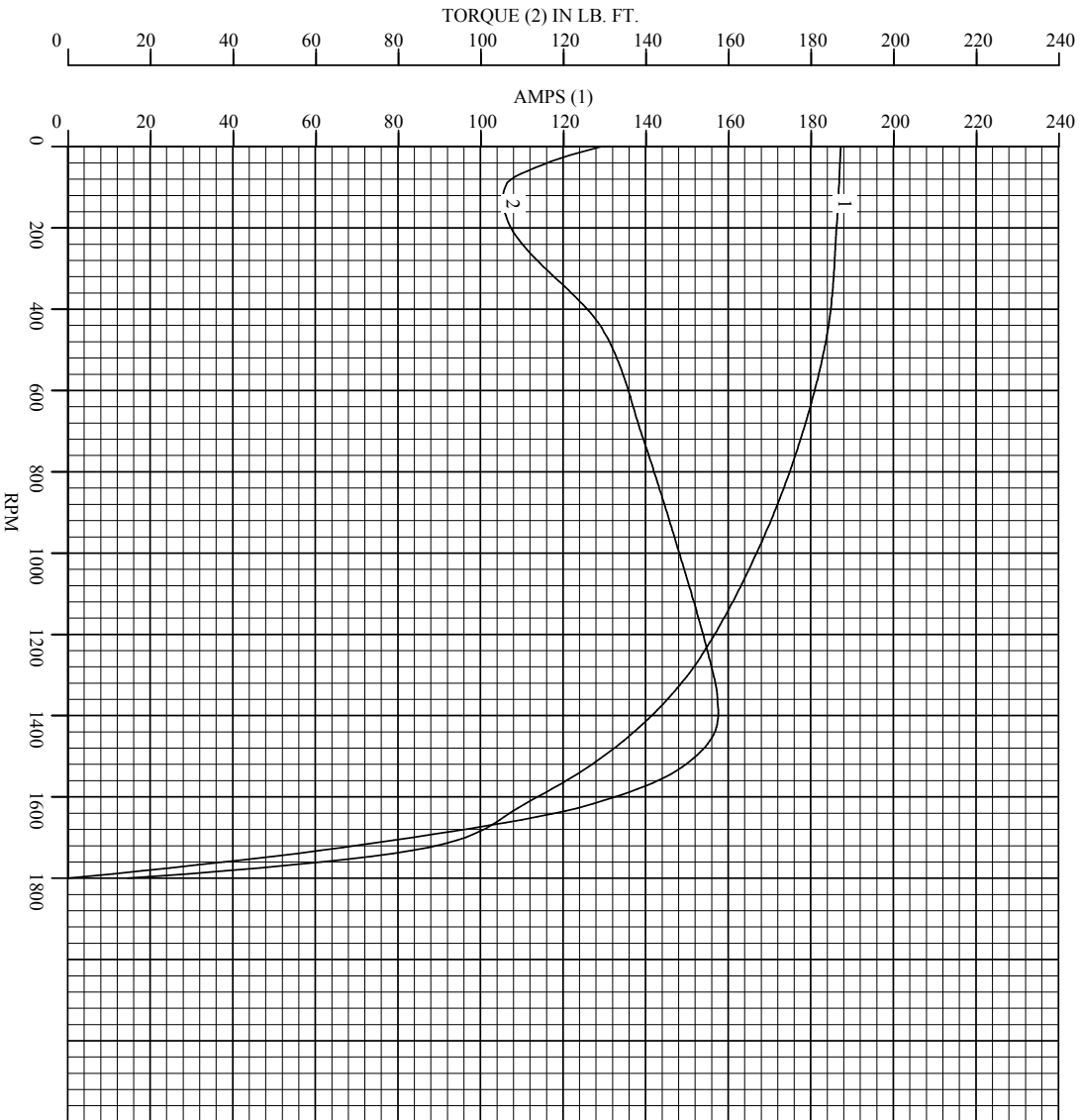


DR. BY CAD  
 CK. BY RM  
 APP. BY RM  
 DATE 05/25/2016

**ISPM MOTOR PERFORMANCE DATA**  
 LS7018A  
 ISSUE DATE 05/25/2016

S.O.	--	HERTZ	60	AMB°C	40	CODE LETTER	G
FRAME	HL284T	RPM	1800	INSUL	H	WK <sup>2</sup> (lb-ft <sup>2</sup> )	1.82
HP	25	VOLTS	460	S.F.	1.15	NEMA DESIGN	B
TYPE	PSM	AMPS	25.8	ENCL	TEFC	STATOR RES. @ 25°C	.4081
PHASE	3	DUTY	CONT			OHMS (BETWEEN LINES)	

### Amps & Torque vs. RPM During Acceleration



TYPICAL DATA

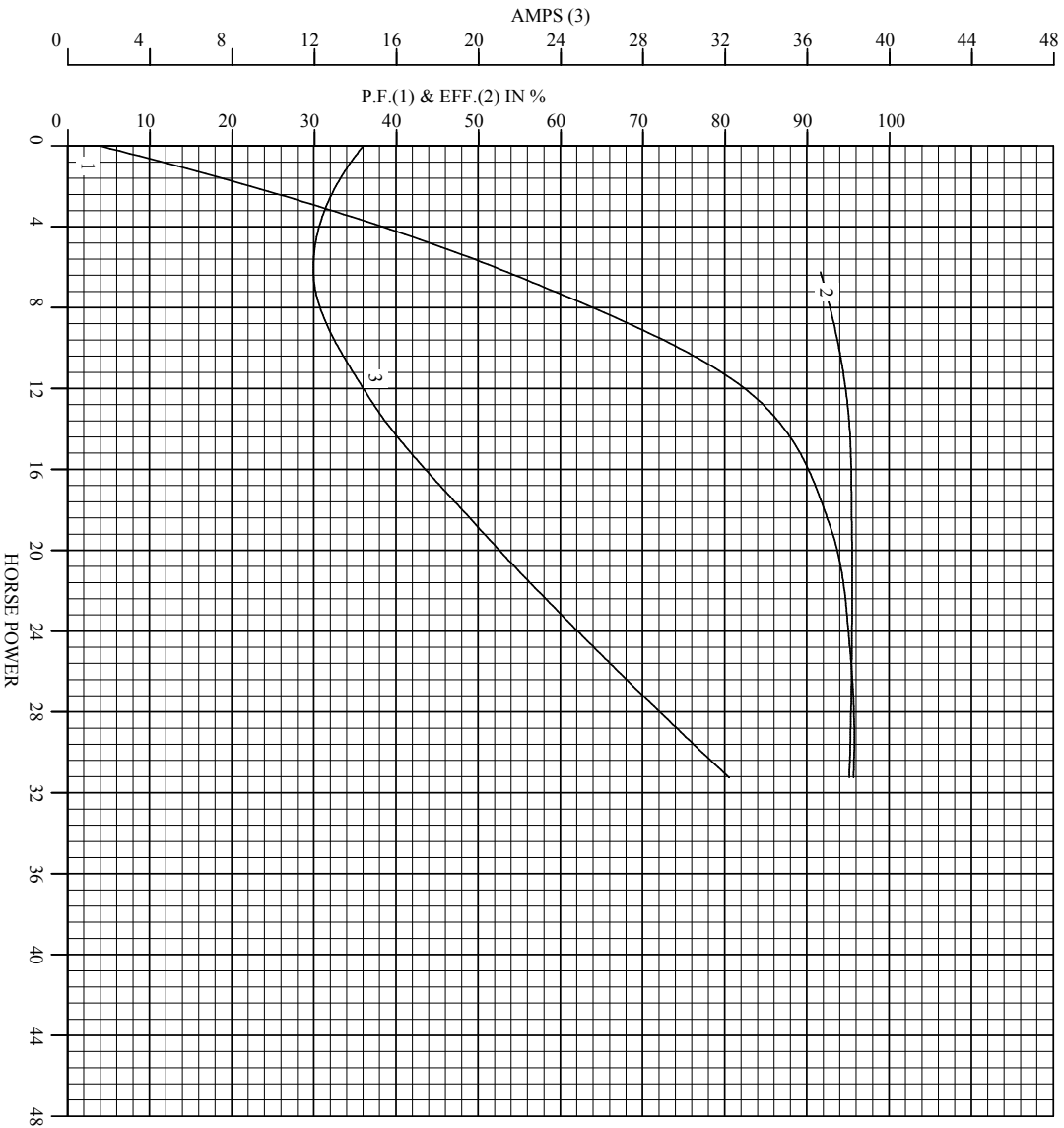


DR. BY \_\_\_\_\_ CAD  
 CK. BY \_\_\_\_\_ RIM  
 APP. BY \_\_\_\_\_ RIM  
 DATE 05/25/2016

**ISPM MOTOR PERFORMANCE CURVES**  
 ISSUE DATE **L57018A**  
 05/25/2016

S.O.	--	HERTZ	60	AMB°C	40	CODE LETTER	G
FRAME	HL284T	RPM	1800	INSUL	H	WK <sup>2</sup> (lb-ft <sup>2</sup> )	1.82
HP	25	VOLTS	460	S.F.	1.15	NEMA DESIGN	B
TYPE	PSM	AMPS	25.8	ENCL	TEFC	STATOR RES. @ 25°C	.4081
PHASE	3	DUTY	CONT			OHMS (BETWEEN LINES)	

### Performance Data vs. HP At Synchronous Speed



TYPICAL DATA

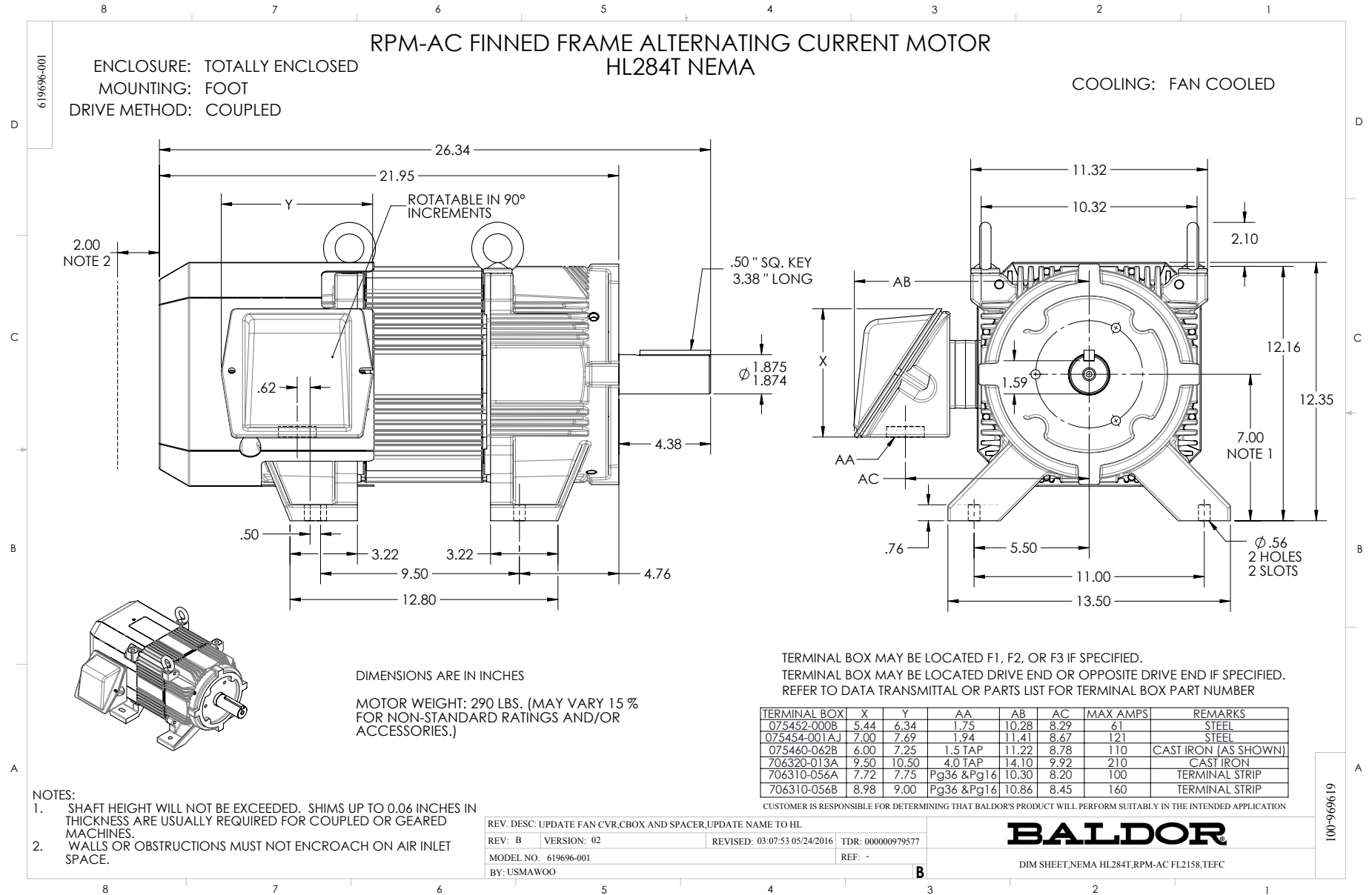


DR. BY \_\_\_\_\_ CAD  
 CK. BY \_\_\_\_\_ RIM  
 App. BY \_\_\_\_\_ RIM  
 DATE 05/25/2016

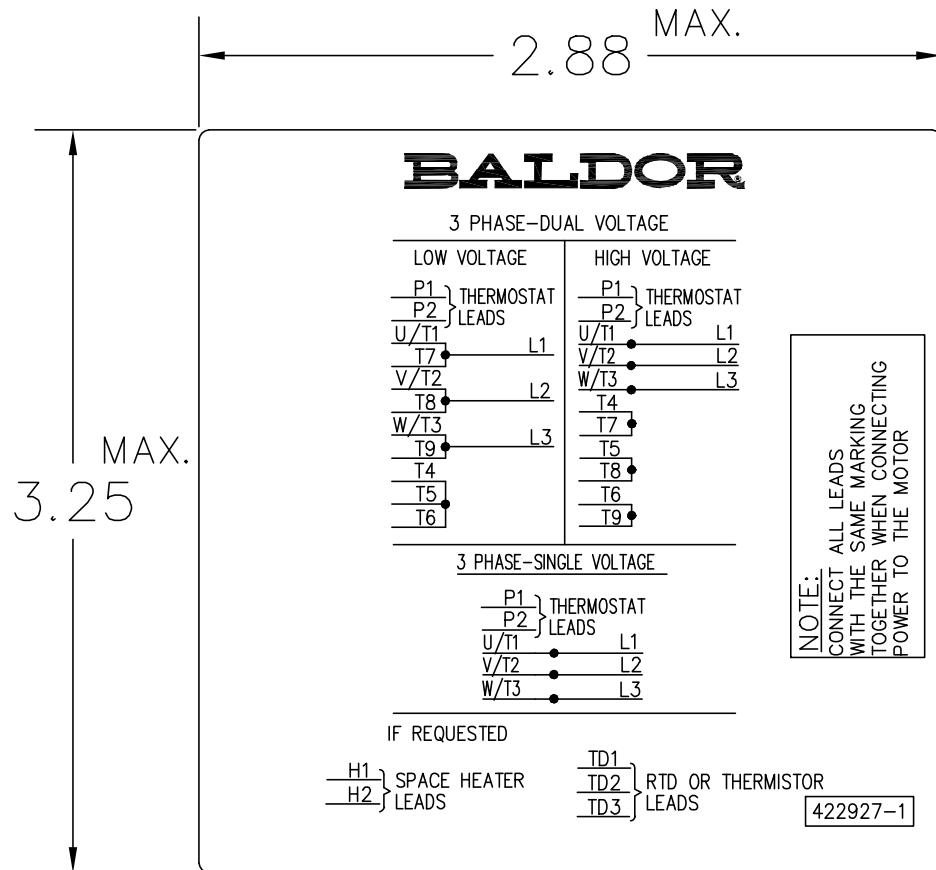
**ISPM MOTOR  
 PERFORMANCE  
 CURVES**

ISSUE DATE **L57018A**  
 05/25/2016





422927-001



NOTE:  
DATA TO BE SIZED  
SO THAT IT FITS INTO  
MATERIAL DECAL  
DIMENSIONS. MAKE  
LETTERS & NUMBERS  
AS LARGE AS POSSIBLE.

MATERIAL: CERAMATIC DGF-P4  
PERMA GRIP ADHESIVE

ALL LETTERS, NUMBERS  
AND LINES TO BE BLACK  
ON WHITE BACKGROUND.

422927-001

REV. DESC: CHANGE BACKGROUND COLOR FROM GOLD TO WHITE		
REV. LTR: B	VERSION: 02	TDR: 00000788708
FILE: \RGG\00000\203	REVISED: 08:09:29 03/04/2013	
MTL: -	BY: RGGWT	

**BALDOR**

EXTERNAL CONNECTION LABEL

SH 1 of 1