



Customer information packet

VZDNM3556

1HP, 1170RPM, 3PH, 60HZ, 56C, 3532M, TENV, F1, N

Class - None

Division - Not Applicable

Specifications

Enclosure	TENV
Frame	56C
Frame Material	Steel
Frequency	60.00 Hz
Haz Area Class and Group	None
Haz Area Division	Not Applicable
Motor Letter Type	Three Phase
Output @ Frequency	1.000 HP @ 60 HZ
Phase	3
Synchronous Speed @ Frequency	1200 RPM @ 60 HZ
Voltage @ Frequency	230.0 V @ 60 HZ 460.0 V @ 60 HZ
Agency Approvals	CSA EEV NEMA PREMIUM UR
Ambient Temperature	40 °C
Auxiliary Box	NO AUXILLARY BOX
Auxiliary Box Lead Termination	None
Base Indicator	No Mounting
Bearing Grease Type	Polyrex EM (-20F +300F)
Blower	None
Current @ Voltage	1.900 A @ 460.0 V 3.800 A @ 230.0 V
Design Code	B
Drip Cover	No Drip Cover
Duty Rating	CONT
Efficiency @ 100% Load	82.5 %
Electrically Isolated Bearing	Not Electrically Isolated
Feedback Device	NO FEEDBACK
Front Shaft Indicator	None
Heater Indicator	No Heater
High Voltage Full Load Amps	1.9 a

Part detail

Revision	-
Type	AC
Mech. spec.	35E6691
Base	
Status	PRD/A
Elec. spec.	35WGG187
Layout	35LYE6691
Eff. date	05-29-2025
CD Diagram	CD0005
Poles	06
Leads	9#18
Proprietary	False
Created date	05-13-2025

Insulation Class	H
Inverter Code	Inverter Duty
KVA Code	L
Lifting Lugs	No Lifting Lugs
Locked Bearing Indicator	Locked Bearing
Max Speed	1800 rpm
Motor Lead Quantity/Wire Size	9 @ 18 AWG
Motor Lead Termination	Flying Leads
Motor Standards	NEMA
Motor Type	3532M
Mounting Arrangement	F1
Number of Poles	6
Overall Length	15.72 IN
Power Factor	61
Product Family	General Purpose
Pulley End Bearing Type	Sealed Bearing
Pulley Face Code	C-Face
Pulley Shaft Indicator	Standard
Rodent Screen	None
RoHS Status	ROHS NON-COMPLIANT
Service Factor	1.00
Shaft Diameter	0.625 IN
Shaft Ground Indicator	Shaft Grounding
Shaft Rotation	Reversible
Shaft Slinger Indicator	No Slinger
Speed	1170 rpm
Speed Code	Single Speed
Starting Method	Direct on line
Thermal Device - Bearing	None
Thermal Device - Winding	Normally Closed Thermostat
Vibration Sensor Indicator	No Vibration Sensor
Winding Thermal 1	None
Winding Thermal 2	None

Nameplate

NP3943L			
CAT.NO.	VZDNM3556		
SPEC.	35E6691G187Z1		
FRAME	56C	H.P.	1 TE
VOLTS	230/460 ENCL TENV		
MAG. CUR.	2.7/1.35	F.L. AMPS	3.8/1.9
R.P.M.	1170	R.P.M. MAX	1800
HZ.	60	PH.	3 CLASS H
SER.F.	1.00	SL HZ	1.5
NEMA NOM. EFF.	82.5	WK2	0.232
RATING	40C AMB-CONT		
DE	6205	ODE	6203
CC	010A SN		
	1000:1 CT 1.5:1 CHP		
	1.15 SF ON SINEWAVE		

AC Induction Motor Performance Data

Record # 108111

Typical performance - not guaranteed values

Winding: 35WGG187-R006		Type: 3532M	Enclosure: TENV
Nameplate Data		460 V, 60 Hz: High Voltage Connection	
Rated Output (HP)	1	Full Load Torque	4.5 LB-FT
Volts	230/460	Start Configuration	direct on line
Full Load Amps	3.8/1.9	Breakdown Torque	18.8 LB-FT
R.P.M.	1170	Pull-up Torque	10.3 LB-FT
Hz	60 Phase	Locked-rotor Torque	12 LB-FT
NEMA Design Code	B KVA Code	Starting Current	12.4 A
Service Factor (S.F.)	1.15	No-load Current	1.35 A
NEMA Nom. Eff.	82.5 Power Factor	Line-line Res. @ 25°C	14.7 Ω
Rating - Duty	40C AMB-CONT	Temp. Rise @ Rated Load	79°C
S.F. Amps		Temp. Rise @ S.F. Load	91°C
		Locked-rotor Power Factor	46
		Rotor inertia	0.232 LB-FT ²

Load Characteristics 460 V, 60 Hz, 1 HP

% of Rated Load	25	50	75	100	125	150	S.F.
Power Factor	26	40	52	61	68	72	65
Efficiency	67.3	78.2	81.7	82.5	82.1	81	82.3
Speed	1194	1188	1182	1175	1167	1159	1170
Line amperes	1.38	1.48	1.65	1.86	2.11	2.4	2.01

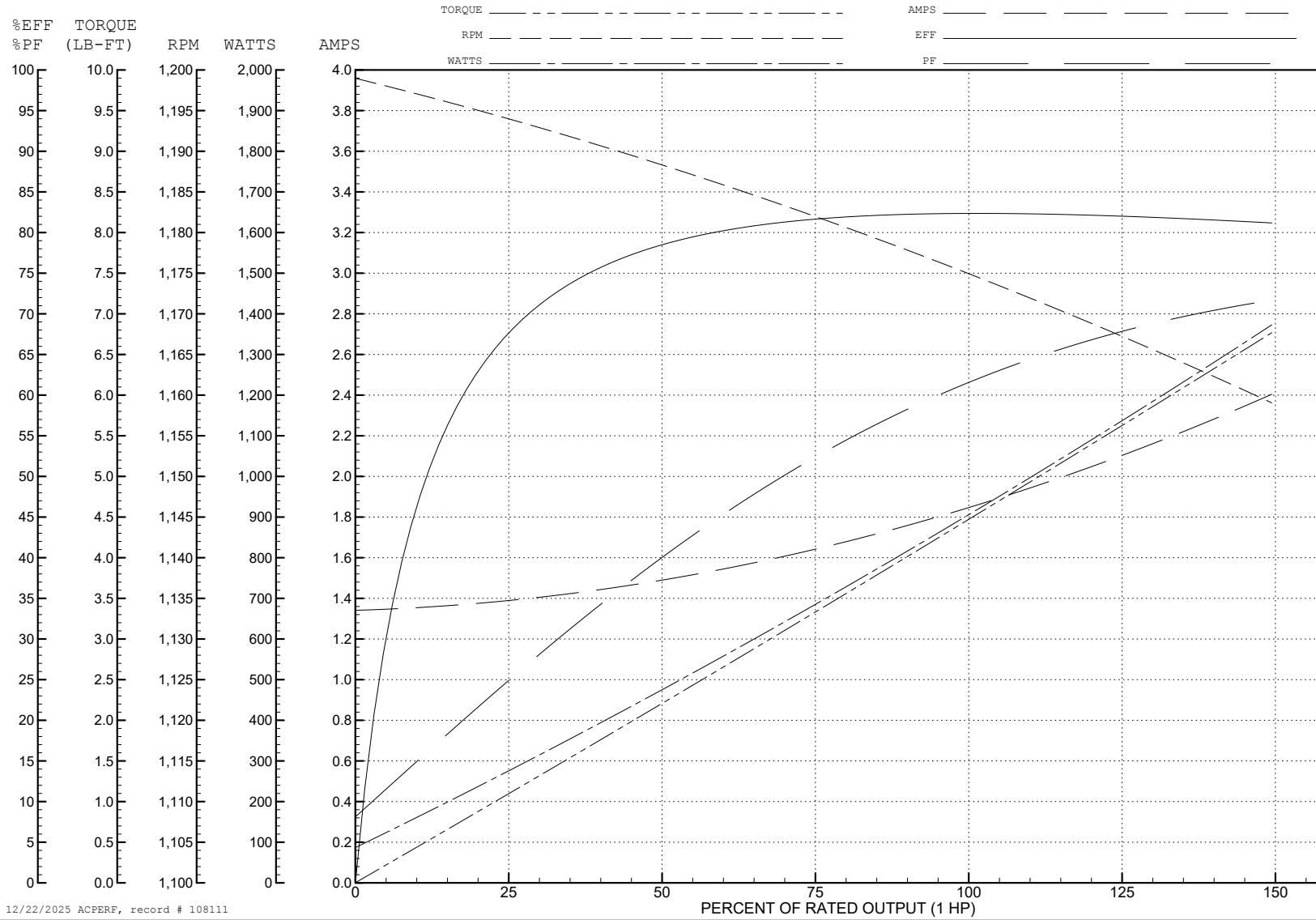
ABB Motors and Mechanical Inc.

WINDING # 35WGG187

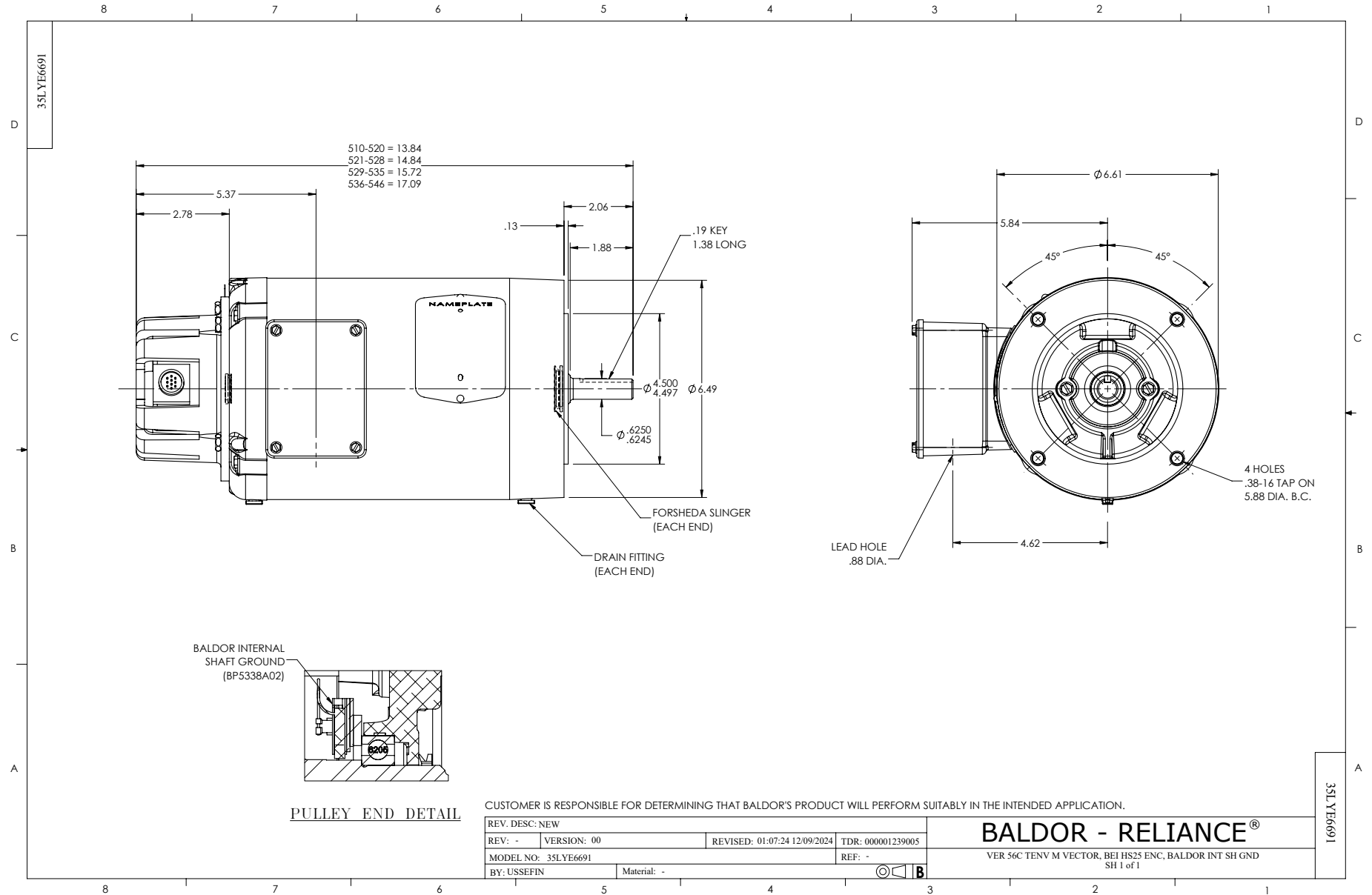
Typical performance - not guaranteed values.

1 HP 3 PH 60 HZ 1170 RPM 460 V 3532M

TORQUES (LB-FT): PO=18.8 PU=10.3 LR=12 LRA=12.4



12/22/2025 ACPERF, record # 108111



CD0005



LOW VOLTAGE
(2Y)



LINE

HIGH VOLTAGE
(1Y)



LINE

NOTES:

1. INTERCHANGE ANY TWO LINE LEADS TO REVERSE ROTATION.
2. OPTIONAL THERMOSTATS ARE PROVIDED WHEN SPECIFIED.
3. ACTUAL NUMBER OF INTERNAL PARALLEL CIRCUITS MAY BE A MULTIPLE OF THOSE SHOWN ABOVE.
4. LEAD COLORS ARE OPTIONAL. LEADS MUST ALWAYS BE NUMBERED AS SHOWN.

CD0005

REV. DESC: REVISE TO SHOW OPTIONAL COLORS			
REV. LTR: E	BY: JLP	REVISED: 01/19/99 10:15	TDR: 0171435
S00000		FILE: AAA00005140	MDL: -
		MTL: -	

BALDOR ELECTRIC Co.

3PH, DV, 9 LEADS