



Customer information packet

VJPFPM2542T-5

50HP, 3525RPM, 3PH, 60HZ, 324JP, 4044M, OPSB, F

Specifications

Enclosure	OPSB
Frame	324JP
Frame Material	Steel
Frequency	60.00 Hz
Motor Letter Type	Three Phase
Output @ Frequency	50.000 HP @ 60 HZ
Phase	3
Synchronous Speed @ Frequency	3600 RPM @ 60 HZ
Voltage @ Frequency	575.0 V @ 60 HZ
Agency Approvals	CSA EEV UL
Ambient Temperature	40 °C
Auxiliary Box	NO AUXILLARY BOX
Auxiliary Box Lead Termination	None
Base Indicator	No Mounting
Bearing Grease Type	Polyrex EM (-20F +300F)
Blower	None
Current @ Voltage	46.000 A @ 575.0 V
Design Code	B
Drip Cover	Drip Cover
Duty Rating	CONT
Efficiency @ 100% Load	92.4 %
Electrically Isolated Bearing	Not Electrically Isolated
Feedback Device	NO FEEDBACK
Heater Indicator	No Heater
High Voltage Full Load Amps	46.0 a
Insulation Class	F
Inverter Code	Not Inverter
KVA Code	F
Lifting Lugs	Vertical Lifting Lugs
Locked Bearing Indicator	Locked Bearing
Motor Lead Termination	Flying Leads

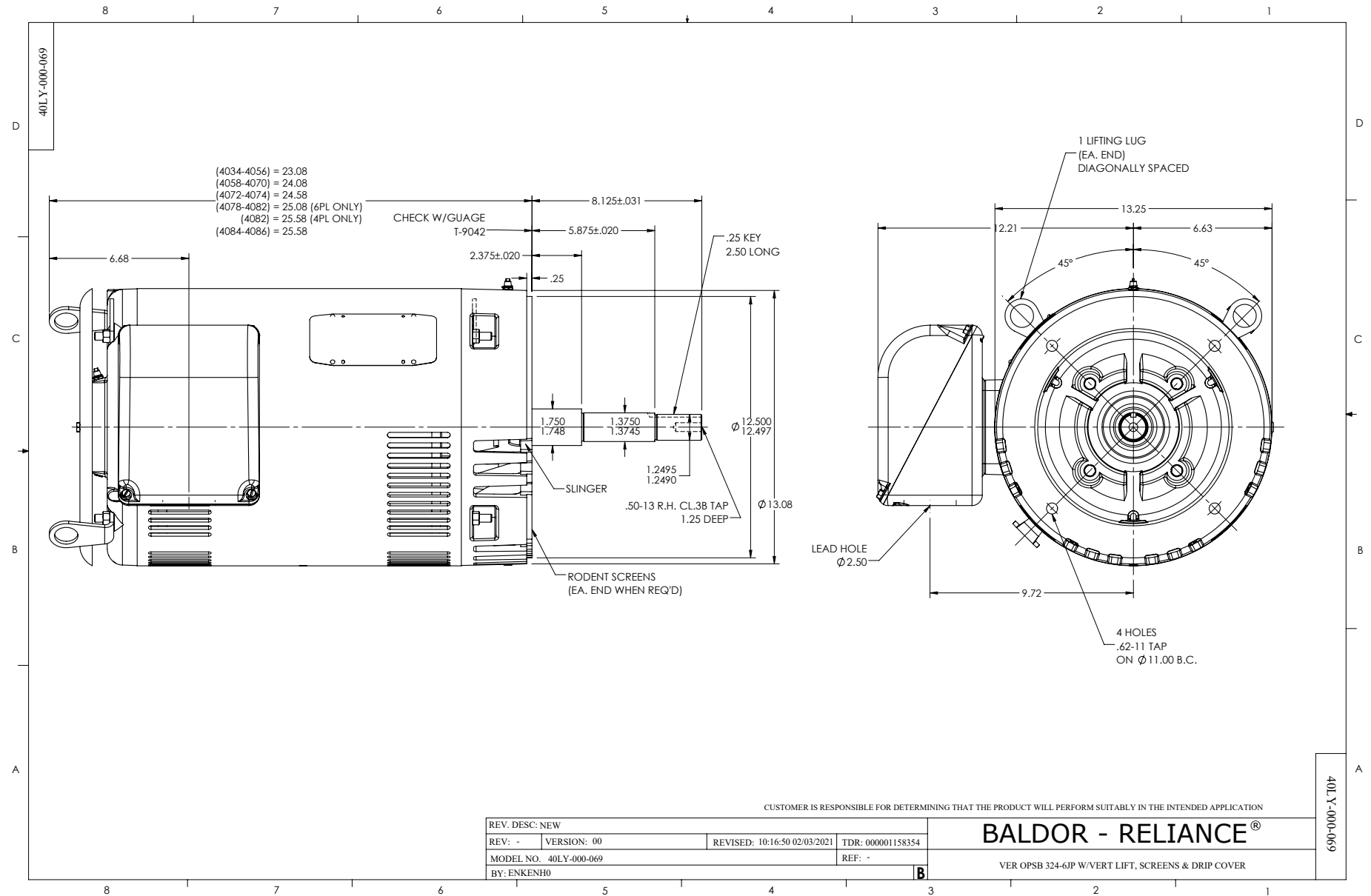
Part detail

Revision	A
Type	AC
Mech. spec.	
Base	
Status	PRD/A
Elec. spec.	40WGX356
Layout	40LY-000-069
Eff. date	08-01-2023
CD Diagram	CD0382
Poles	02
Leads	6#8
Proprietary	False
Created date	02-09-2021

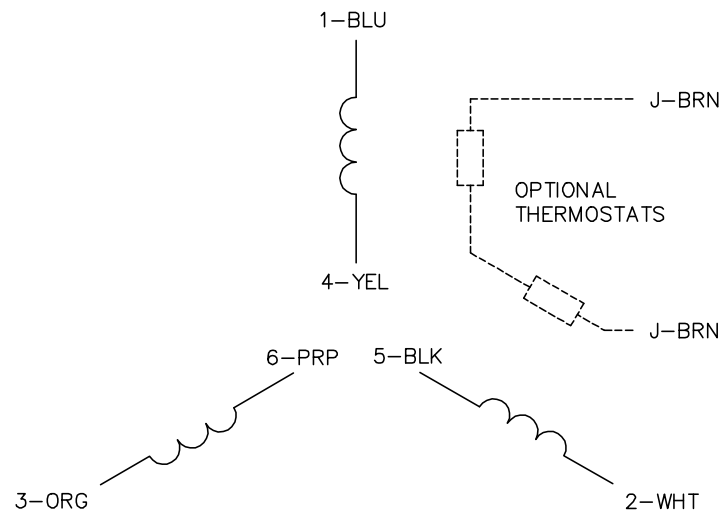
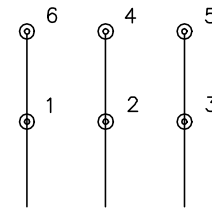
Motor Standards	NEMA
Motor Type	4044M
Mounting Arrangement	F1
Number of Poles	2
Overall Length	31.21 IN
Power Factor	87
Product Family	General Purpose
Pulley Face Code	C-Face
Rodent Screen	Included
Service Factor	1.15
Shaft Diameter	1.250 IN
Shaft Ground Indicator	No Shaft Grounding
Shaft Rotation	Reversible
Speed	3525 rpm
Speed Code	Single Speed
Starting Method	Wye Start - Delta Run
Thermal Device - Bearing	None
Thermal Device - Winding	None
Vibration Sensor Indicator	No Vibration Sensor
Winding Thermal 1	None
Winding Thermal 2	None

Nameplate

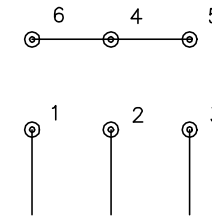
NP3454L												
CAT.NO.	VJPFPM2542T-5				CUST P/N				I.P. 23			
SPEC.	40-0000-0207				SER.NO.				FRAME 324JP			
HZ	60	HP	50	RPM 3525		HZ		HP		RPM		
VOLTS	575			CODE	F	VOLTS			CODE			
AMPS	46			DES	B	AMPS			DES			
EFF	92.4	SER.F.	1.15	PF 87		EFF		SER.F.		PF		
RATING	40C AMB-CONT				DE BRG 6312		GREASE		POLYREX EM			
BLANK					ODE BRG 6309		MTR. WT.		396			
					CLASS F		PH 3					
					ENCL OPSB		CC 010A					
HTR-VOLTS				HTR-AMPS		HTR-WATTS						



CD0382

RUN CONNECTION
(1D)

LINE

START CONNECTION
(1Y)

LINE

NOTES:

1. INTERCHANGE ANY TWO LINE LEADS TO REVERSE ROTATION.
2. OPTIONAL THERMOSTATS ARE PROVIDED WHEN SPECIFIED.
3. ACTUAL NUMBER OF INTERNAL PARALLEL CIRCUITS MAY BE A MULTIPLE OF THOSE SHOWN ABOVE.
4. LEAD COLORS ARE OPTIONAL. LEADS MUST ALWAYS BE NUMBERED AS SHOWN.
5. FOR ACROSS-THE-LINE STARTING, USE 'RUN' CONNECTION.

REV. DESC: ADD CLASS CONN00000007

REV. LTR: F

VERSION: 01

TDR: 000001099922

FILE: \AAA\00005\243

REVISED: 09:05:32 02/19/2019

BY: ENBRIRO

MTL: —



BALDOR - RELIANCE®

3PH, SV, 6 LEADS, Y START/D RUN

SH 1 of 1

CD0382