



Customer information packet

EM4410TR-4

125HP, 1785RPM, 3PH, 60HZ, 444T, A44076M, TEFC

Class - None

Division - Not Applicable

Specifications

Enclosure	TEFC
Frame	444T
Frame Material	Iron
Frequency	60.00 Hz
Haz Area Class and Group	None
Haz Area Division	Not Applicable
Motor Letter Type	Three Phase
Output @ Frequency	125.000 HP @ 60 HZ
Phase	3
Synchronous Speed @ Frequency	1800 RPM @ 60 HZ
Voltage @ Frequency	460.0 V @ 60 HZ
Agency Approvals	CCSAUSEEV
Ambient Temperature	40 °C
Auxiliary Box	NO AUXILLARY BOX
Base Indicator	Rigid
Bearing Grease Type	Mobil SHC 220 (Athens Only)
Current @ Voltage	144.000 A @ 460.0 V
Design Code	B
Drip Cover	No Drip Cover
Duty Rating	CONT
Efficiency @ 100% Load	95.4 %
Feedback Device	NO FEEDBACK
Heater Indicator	No Heater
High Voltage Full Load Amps	144.0 a
Insulation Class	F
Inverter Code	Inverter Ready
KVA Code	G
Lifting Lugs	Standard Lifting Lugs
Motor Lead Quantity/Wire Size	3 @ 1/0 AWG
Motor Standards	NEMA
Motor Type	A44076M
Mounting Arrangement	F1

Part detail

Revision	S
Type	AC
Mech. spec.	
Base	
Status	PRD/A
Elec. spec.	A44WG3870
Layout	617435-164
Eff. date	09-25-2025
CD Diagram	416820-036
Poles	04
Leads	3#1/0
Proprietary	False
Created date	02-19-2013

Number of Poles	4
Overall Length	44.75 IN
Power Factor	85
Product Family	Other
Pulley End Bearing Type	Roller
Pulley Face Code	Standard
Service Factor	1.15
Shaft Diameter	3.375 IN
Shaft Ground Indicator	No Shaft Grounding
Shaft Rotation	Reversible
Shaft Slinger Indicator	No Slinger
Speed	1785 rpm
Speed Code	Single Speed
Starting Method	Direct on line
Thermal Device - Bearing	None
Thermal Device - Winding	None

Nameplate

NP2349L

SPEC NO.	P44G4027	CAT.NO.	EM4410TR-4	FRAME	444T
HP	125	VOLTS	460	PHASE	3
RPM	1785	AMPS	144	HZ	60
DRIVE END BEARING	110RU02M30X	DUTY	CONT	INSUL.CLASS	F
OPP D.E. BEARING	90BC03J30X	ENCL	TEFC	CODE	G
SER.NO.		POWER FACTOR	85	NEMA-NOM-EFFICIENCY	95.4
				MAX CORR KVAR	27
				GUARANTEED EFFICIENCY	94.5
				NEMA NOM/CSA QUOTED EFF	
				MOTOR WEIGHT	

NP2496L

MOBIL SHC 220 GREASE

S/O	FRAME	HP	TYPE	PHASE/ HERTZ	RPM	VOLTS
	444	125	P	3/60	1785	460

AMPS	DUTY	AMB °C/ INSUL	S.F.	NEMA DESIGN	CODE LETTER	ENCLOSURE
144	CONT	40/F	1.15	B	G	TEFC

E/S	ROTOR	TEST S.O.	TEST DATE	STATOR RES. @25 °C OHMS (BETWEEN LINES)
498834	418143052KE	---	---	.0383

PERFORMANCE

LOAD	HP	AMPERES	RPM	% POWER FACTOR	% EFFICIENCY
NO LOAD	0	44.8	1800	4.44	0
1/4	31.3	61.7	1796	51.1	92.8
2/4	62.5	84.1	1792	73.0	95.3
3/4	93.7	112	1788	81.7	95.7
4/4	125	144	1784	85.3	95.5
5/4	156	178	1780	86.6	95.1

SPEED TORQUE

	RPM	TORQUE % FULL LOAD	TORQUE LB.-FT.	AMPERES
LOCKED ROTOR	0	133	489	892
PULL UP	270	114	420	875
BREAKDOWN	1729	290	1067	500
FULL LOAD	1784	100	368	144

AMPERES SHOWN FOR 460 VOLT CONNECTION. IF OTHER CONNECTIONS ARE AVAILABLE, THE AMPERES WILL VARY INVERSELY WITH THE RATED VOLTAGE.

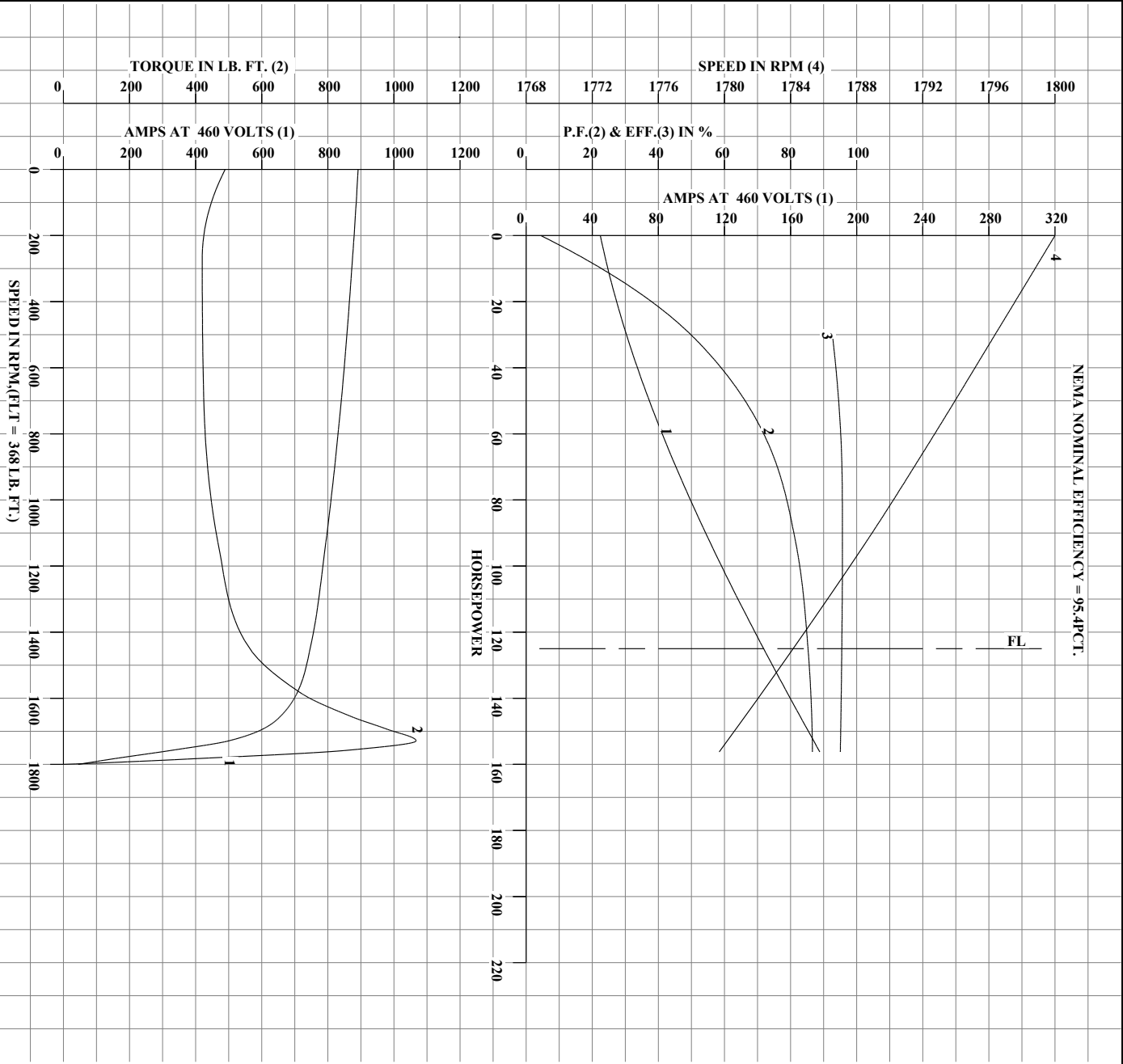
TYPICAL DATA
NEMA NOMINAL EFFICIENCY = 95.4PCT.

	DRAWN BY: CD	AC MOTOR PERFORMANCE DATA	A44W/G3870-R001
	CHECKED BY: CD APPROVED BY: R.MCELVEEN DATE: 1/18/11		DATE ISSUED 05/04/21

USERGHR1

Printed on 06/01/2021 9:16 AM

REL.S.O.	444	RPM	1785	S.F.	1.15	ROTOR	418143052KE
FRAME	444	VOLTS	460	NEMA DESIGN	B	TEST S.O.	TYPICAL DATA
HP	125	AMPS	144	CODE LETTER	G	TEST DATE	---
TYPE	P	DUTY CONT		ENCLOSURE	TEFC	STATOR RES. @ 25°C	.0383
PHASE / HERTZ	3/60	AMB °C / INSUL.	40/F	E/S	498834	OHMS (BETWEEN LINES)	



AMPERES SHOWN FOR 460 VOLT CONNECTION, IF OTHER VOLTAGE CONNECTIONS ARE AVAILABLE, THE AMPERES WILL VARY INVERSELY WITH THE RATED VOLTAGE.



DRAWN BY: CD
CHECKED BY: CD
APPROVED BY: R.MOELVEEN
DATE: 1/18/11

AC MOTOR PERFORMANCE DATA

A44WG3870-R001

ISSUE DATE 05/04/21

USER:GHR1

Printed on 06/01/2021 9:16 AM

REL.S.O.	444	RPM	1785	S.F.	1.15	ROTOR	418143052KE
FRAME	444	VOLTS	460	NEMA DESIGN	B	TEST S.O.	TYPICAL DATA
HP	125	AMPS	144	CODE LETTER	G	TEST DATE	---
TYPE	P	DUTY CONT		ENCLOSURE	TEFC	STATOR RES. @ 25°C	.0383
PHASE/HERTZ	3/60	AMB °C/INSUL	40/F	E/S	498834	OHMS (BETWEEN LINES)	

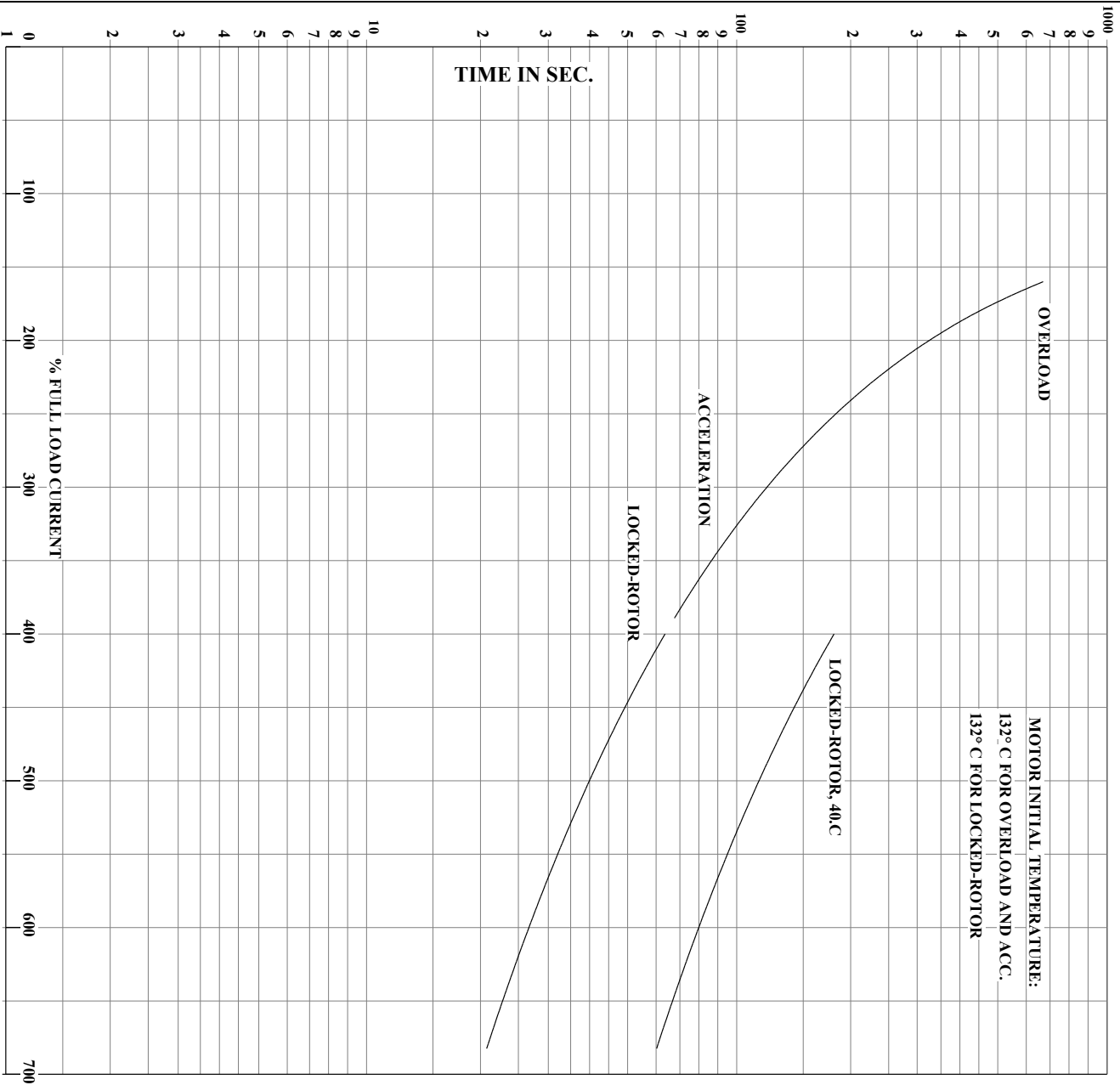
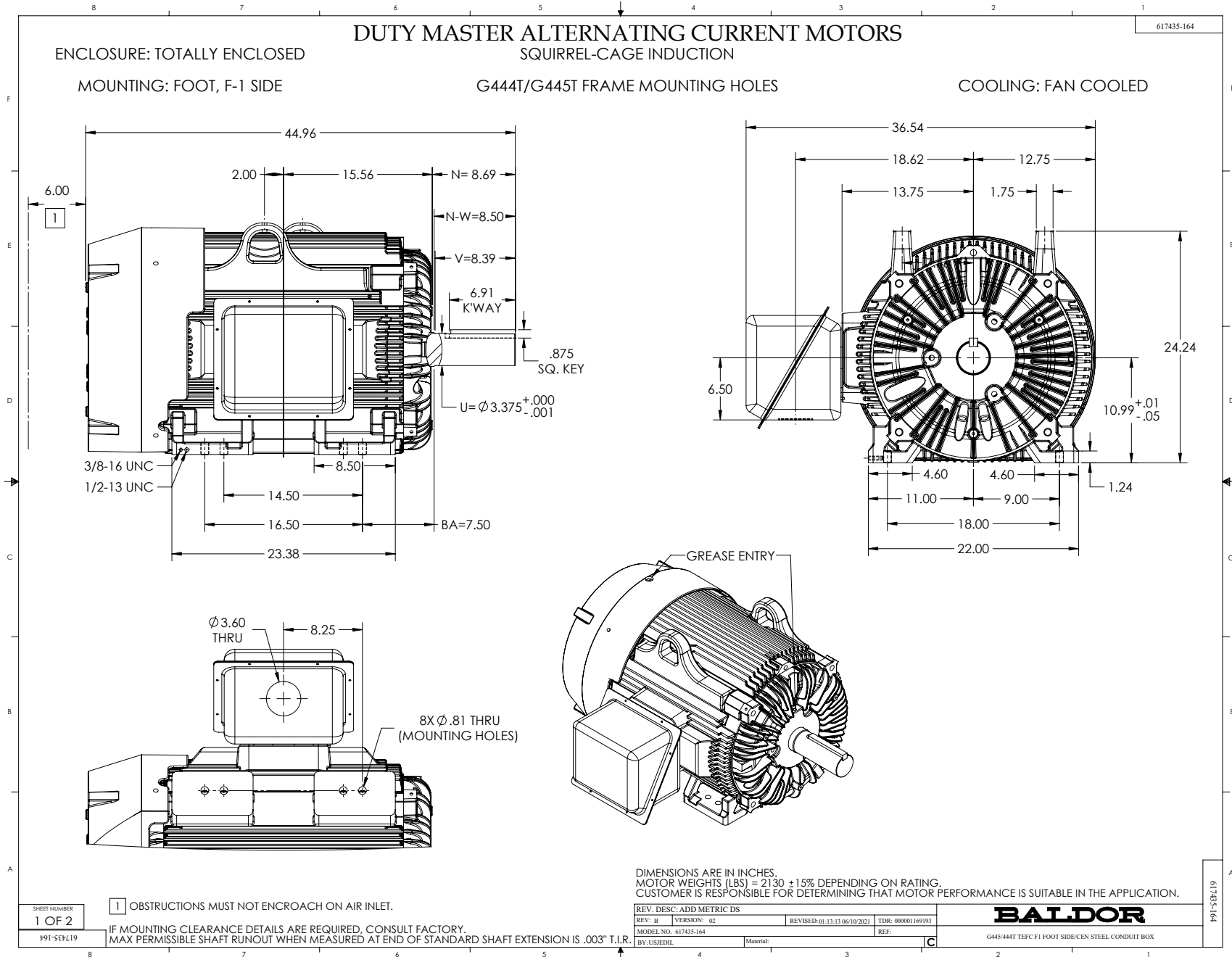


ABB	DRAWN BY: <u>CD</u>	AC MOTOR PERFORMANCE DATA	A44WG3870-R001
	CHECKED BY: <u>CD</u> APPROVED BY: <u>R.MCELVEEN</u> DATE: <u>1/18/11</u>		

USER:CHR1

Printed on 06/01/2021 9:16 AM



617435-164

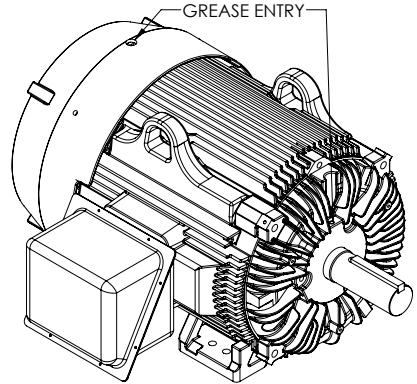
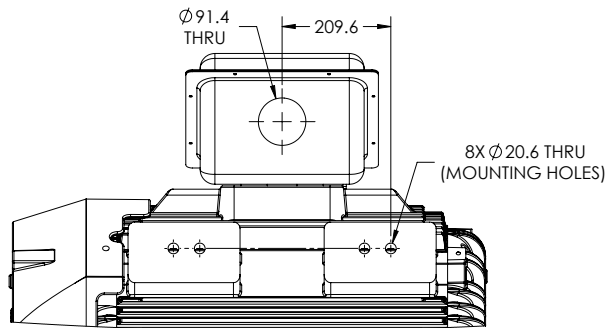
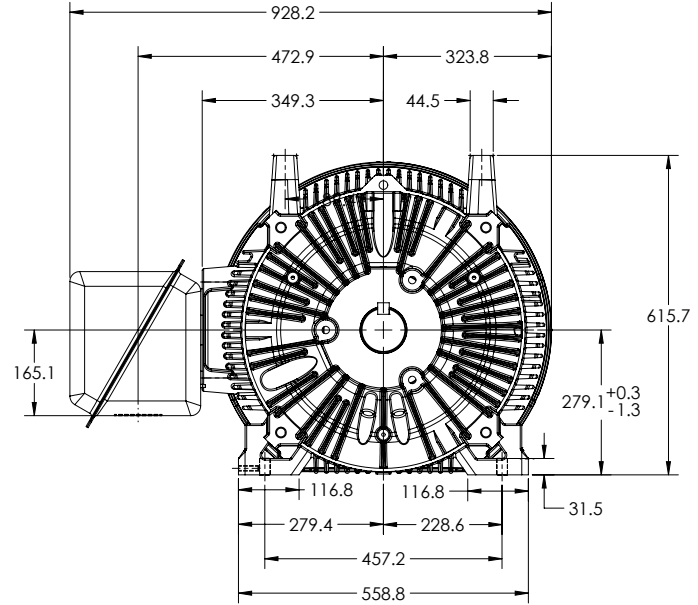
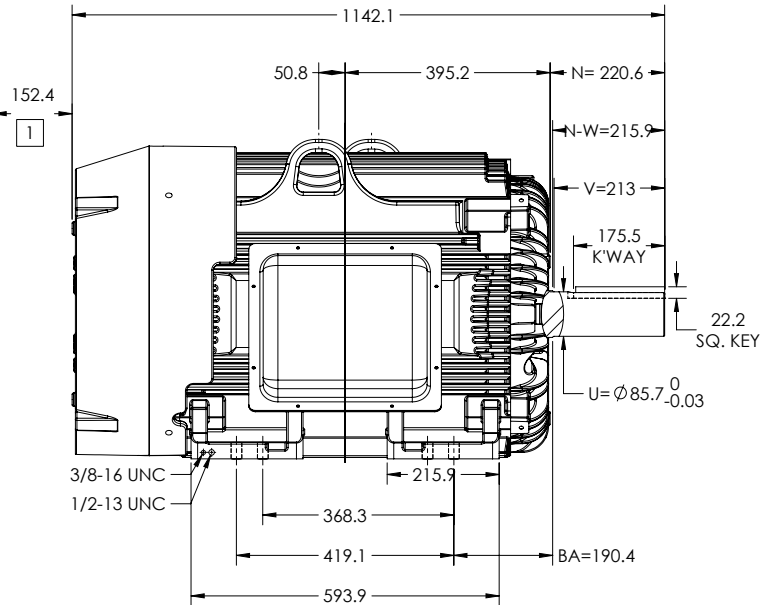
DUTY MASTER ALTERNATING CURRENT MOTORS
SQUIRREL-CAGE INDUCTION

ENCLOSURE: TOTALLY ENCLOSED

MOUNTING: FOOT, F-1 SIDE

G444T/G445T FRAME MOUNTING HOLES

COOLING: FAN COOLED



SHEET NUMBER
2 OF 2

1 OBSTRUCTIONS MUST NOT ENCR OACH ON AIR INLET.

IF MOUNTING CLEARANCE DETAILS ARE REQUIRED, CONSULT FACTORY.
MAX PERMISSIBLE SHAFT RUNOUT WHEN MEASURED AT END OF STANDARD SHAFT EXTENSION IS .08 T.I.R.

DIMENSIONS ARE IN MILLIMETERS.
MOTOR WEIGHTS (LBS) = 966 ±15% DEPENDING ON RATING.
CUSTOMER IS RESPONSIBLE FOR DETERMINING THAT MOTOR PERFORMANCE IS SUITABLE IN THE APPLICATION.

REV. DESC: ADD METRIC DS			
REV: B	VERSION: 02	REVISED: 01-13-13 06/10/2021	TDR: 000001169193
MODEL NO. 617435-164		REF:	
BY: USJEDIL	Material:	C	

BALDOR

G445 444T TEFC F1 FOOT SIDE/CEN STEEL CONDUIT BOX

416820-036

A-C MOTOR
CONNECTION DIAGRAM
STANDARD 3 LEAD CONNECTED



(N.P. 1575-BA)

416820-036

REV. DESC: LOADED TO BUS, C/R 335225		
REV. LTR: -	VERSION: 00	TDR: 000000538207
FILE: \MGA\00000\682	REVISED: 11:54:06 04/30/2010	
MTL: -	BY: RAGRA	

BALDOR

CONN DIAG - STANDARD 3 LEAD
SH 1 of 1