

BALDOR • RELIANCE

Customer information packet

EM4406T-5

150HP, 1785RPM, 3PH, 60HZ, 445T, A4488M, TEFC

Class - None

Division - Not Applicable

Specifications

Enclosure	TEFC
Frame	445T
Frame Material	Iron
Frequency	60.00 Hz
Haz Area Class and Group	None
Haz Area Division	Not Applicable
Motor Letter Type	Three Phase
Output @ Frequency	150.000 HP @ 60 HZ
Phase	3
Synchronous Speed @ Frequency	1800 RPM @ 60 HZ
Voltage @ Frequency	575.0 V @ 60 HZ
Agency Approvals	CCSAUSEEV
Ambient Temperature	40 °C
Auxiliary Box	NO AUXILLARY BOX
Base Indicator	Rigid
Bearing Grease Type	Polyrex EM (-20F +300F)
Current @ Voltage	135.000 A @ 575.0 V
Design Code	B
Drip Cover	No Drip Cover
Duty Rating	CONT
Efficiency @ 100% Load	95.8 %
Enclosure Modification	841
Feedback Device	NO FEEDBACK
Heater Indicator	No Heater
High Voltage Full Load Amps	135.0 a
Insulation Class	F
Inverter Code	Inverter Ready
KVA Code	F
Lifting Lugs	Standard Lifting Lugs
Motor Lead Quantity/Wire Size	3 @ 1 AWG
Motor Standards	NEMA
Motor Type	A4488M

Part detail

Revision	M
Type	AC
Mech. spec.	
Base	
Status	PRD/A
Elec. spec.	A44WG3784
Layout	617435-164
Eff. date	09-25-2025
CD Diagram	416820-036
Poles	04
Leads	3#1
Proprietary	False
Created date	08-13-2012

Mounting Arrangement	F1
Number of Poles	4
Overall Length	44.75 IN
Power Factor	86
Product Family	Other
Pulley End Bearing Type	Ball
Pulley Face Code	Standard
Service Factor	1.15
Shaft Diameter	3.375 IN
Shaft Ground Indicator	No Shaft Grounding
Shaft Rotation	Reversible
Shaft Slinger Indicator	No Slinger
Speed	1785 rpm
Speed Code	Single Speed
Starting Method	Direct on line
Thermal Device - Bearing	None
Thermal Device - Winding	None

Nameplate

NP2349L

SPEC NO.	P44G3908	CAT.NO.	EM4406T-5	FRAME	445T				
HP	150	VOLTS	575	PHASE	3	DESIGN	B	TYPE	P
RPM	1785	AMPS	135	HZ	60	AMB	40	SF	1.15
DRIVE END BEARING	90BC03J30X	DUTY	CONT	INSUL.CLASS	F				
OPP D.E. BEARING	90BC03J30X	ENCL	TEFC	CODE	F				
SER.NO.		POWER FACTOR	86	NEMA-NOM-EFFICIENCY	95.8				
		MAX CORR KVAR	30.0	GUARANTEED EFFICIENCY	95.0				
		NEMA NOM/CSA QUOTED EFF							
		MOTOR WEIGHT							

REL. S.O.	FRAME	HP	TYPE	PHASE/HERTZ	RPM	VOLTS
	445LP	150	P	3/60	1785	575
AMPS	DUTY	AMB ^o C/ INSUL.	S.F.	NEMA DESIGN	CODE LETTER	ENCL.
135	CONT	40/F	1.15	B	F	TEFC
E/S	ROTOR	TEST S.O.	TEST DATE	STATOR RES. @25 ^o C (BETWEEN LINES)		
498866	0	---	---	.0465		

PERFORMANCE


LOAD	HP	AMPERES	RPM	% POWER FACTOR	% EFFICIENCY
NO LOAD	0	39.2	1800	4.26	0
1/4	37.6	55.4	1796	54.3	93.6
2/4	75.0	77.8	1792	75.5	95.7
3/4	112	105	1788	83.3	96.0
4/4	150	136	1784	86.3	95.8
5/4	188	169	1779	87.3	95.3

SPEED TORQUE

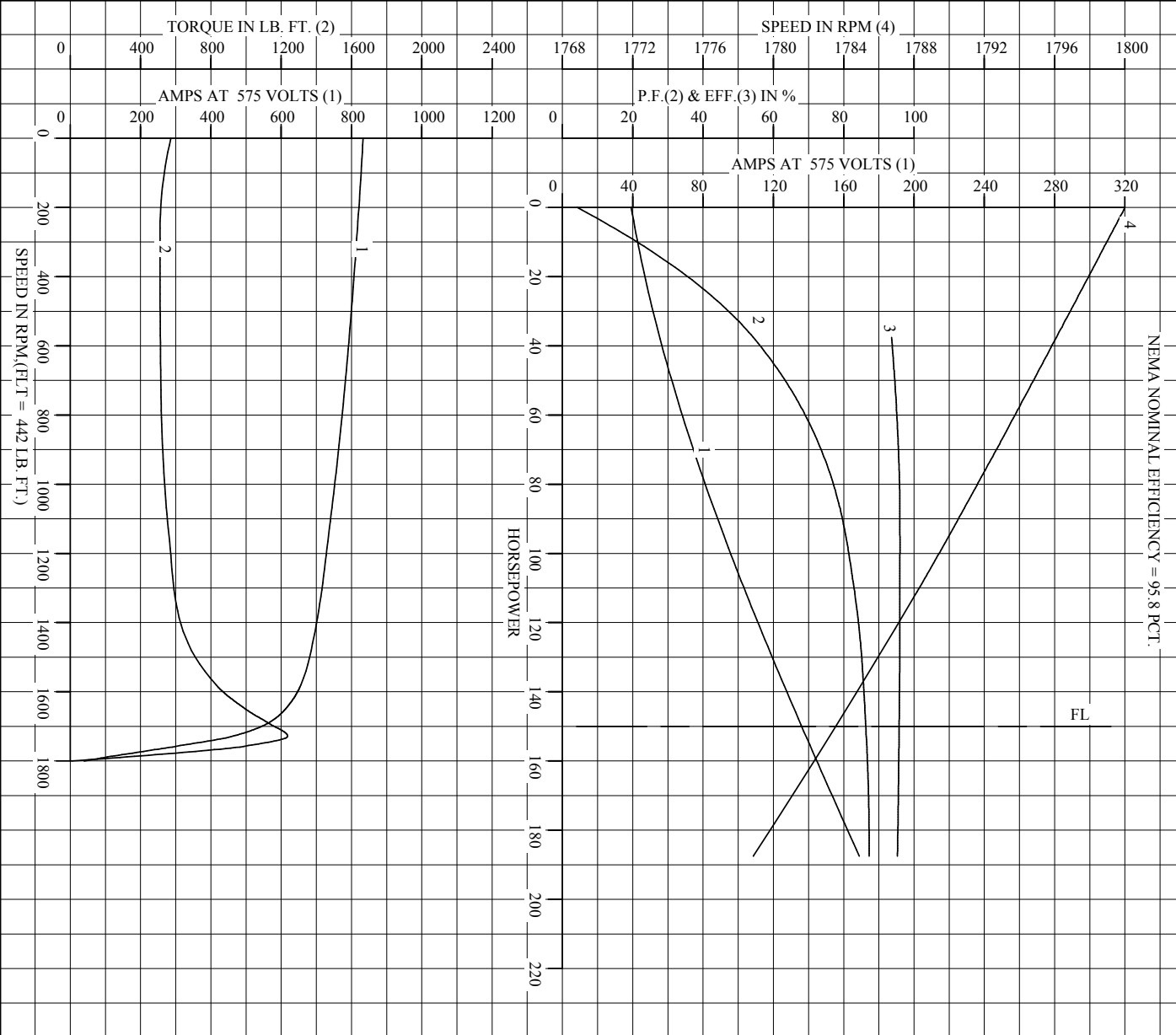
	RPM	TORQUE % FULL LOAD	TORQUE LB.-FT.	AMPERES
LOCKED ROTOR	0	130	572	833
PULL UP	270	116	511	816
BREAKDOWN	1729	280	1237	463
FULL LOAD	1784	100	442	136

AMPERES SHOWN FOR 575. VOLT CONNECTION. IF OTHER VOLTAGE CONNECTIONS ARE AVAILABLE, THE AMPERES WILL VARY INVERSELY WITH THE RATED VOLTAGE

REMARKS: TYPICAL DATA
NEMA NOMINAL EFFICIENCY = 95.8 PCT.

 <p>A MEMBER OF THE ABB GROUP</p>	DR. BY	C. JAMISON	<p>A-C MOTOR PERFORMANCE DATA</p> <p>A44WG3784-R001</p> <p>ISSUE DATE 06/18/18</p>
	CK. BY	W. SMITH	
	APP. BY	W. SMITH	
	DATE	1/18/11	

REL. S.O.		RPM	1785	S.F.	1.15	ROTOR	0	TEST S.O.	TYPICAL DATA
FRAME	445LP	VOLTS	575	NEMA DESIGN	B	TEST DATE	---	STATOR RES. @ 25 °C	.0465
HP	150	AMPS	135	CODE LETTER	F	OHMS (BETWEEN LINES)			
TYPE	P	DUTY	CONT	ENCLOSURE	TEFC				
PHASE/HERTZ	3/60	AMB °C/INSUL	40/F	E/S	498866				



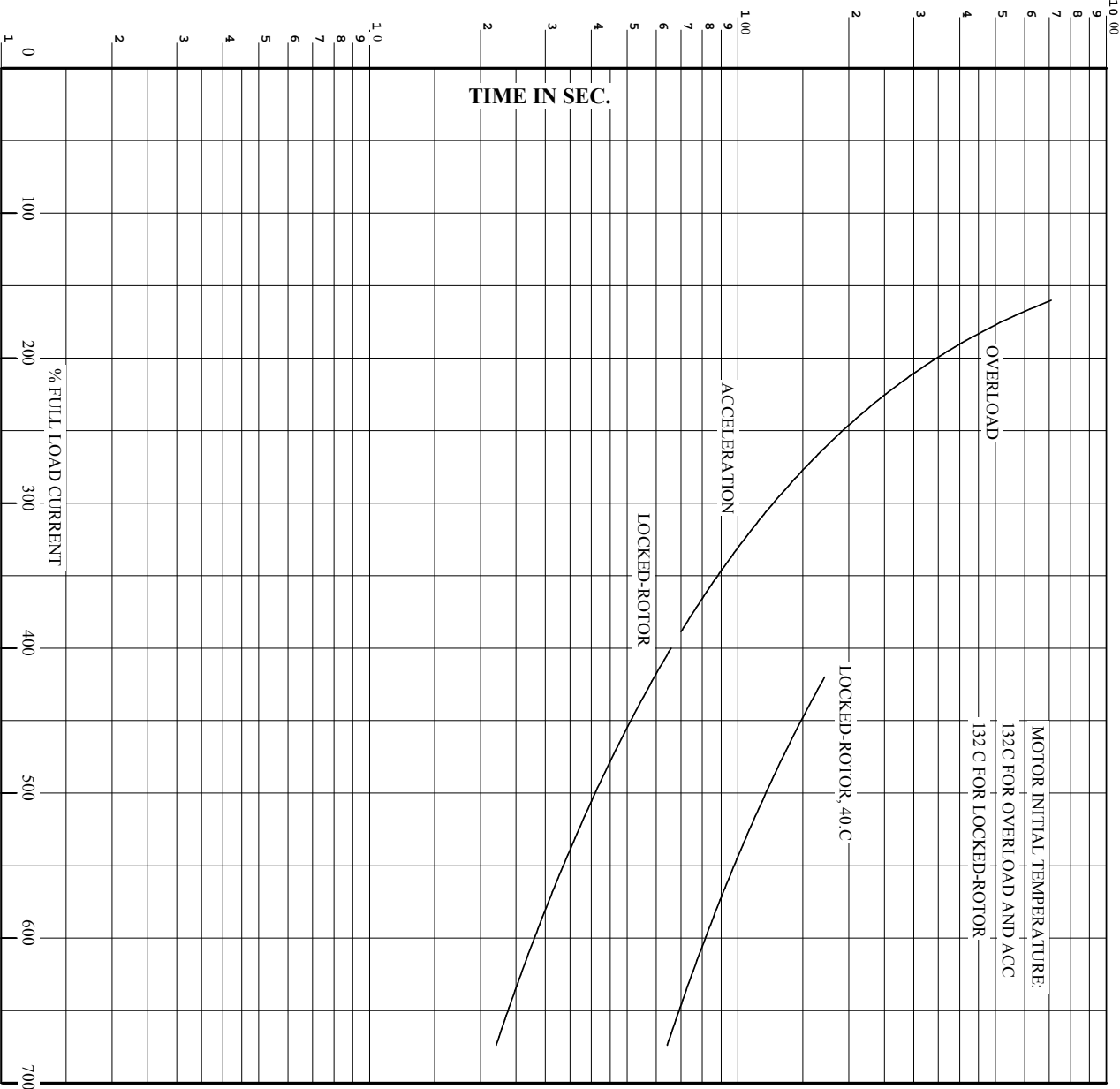
AMPERES SHOWN FOR 575 VOLT CONNECTION, IF OTHER VOLTAGE CONNECTIONS ARE AVAILABLE, THE AMPERES WILL VARY INVERSELY WITH THE RATED VOLTAGE.



DR. BY C. JAMISON
 CK. BY W. SMITH
 App. BY W. SMITH
 DATE 1/8/11

A-C MOTOR PERFORMANCE CURVES
 A44WG3784-R001
 ISSUE DATE 06/18/18

REL. S.O. _____ RPM **1785** S.F. **1.15** ROTOR **0** TEST S.O. **TYPICAL DATA**
 FRAME **445LP** VOLTS **575** NEMA DESIGN **B** TEST S.O. **---**
 HP **150** AMPS **135** CODE LETTER **F** TEST DATE **---**
 TYPE **P** DUTY **CONT** ENCLOSURE **TEFC** STATOR RES. @ 25 °C **0.0465**
 PHASR/HERTZ **3/60** AMB °C/INSUL **40/F** E/S **498866** OMS (BETWEEN LINES)



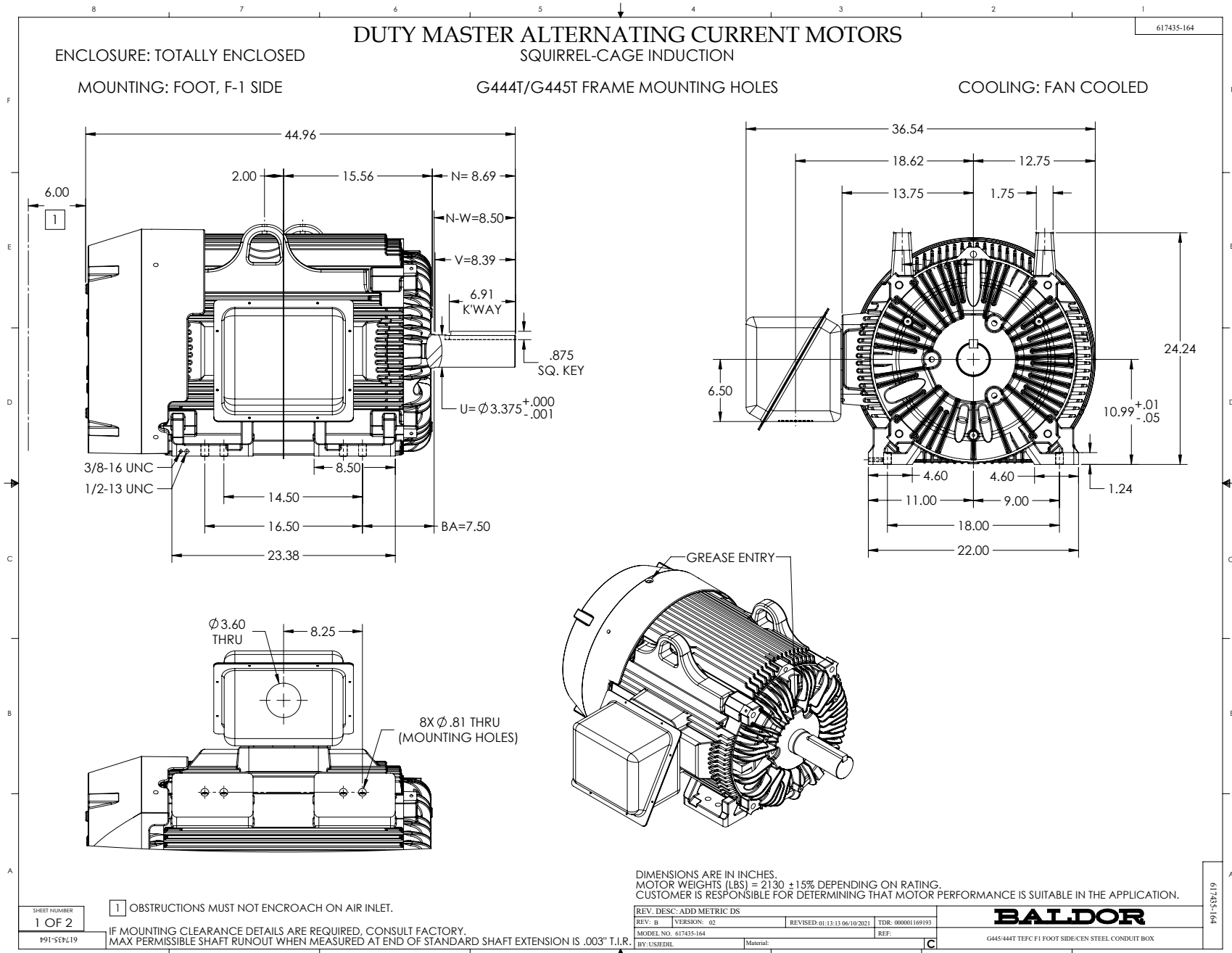
REMARKS: THERMAL LIMIT CURVE
 NEMA NOMINAL EFFICIENCY = 95.8 PCT.

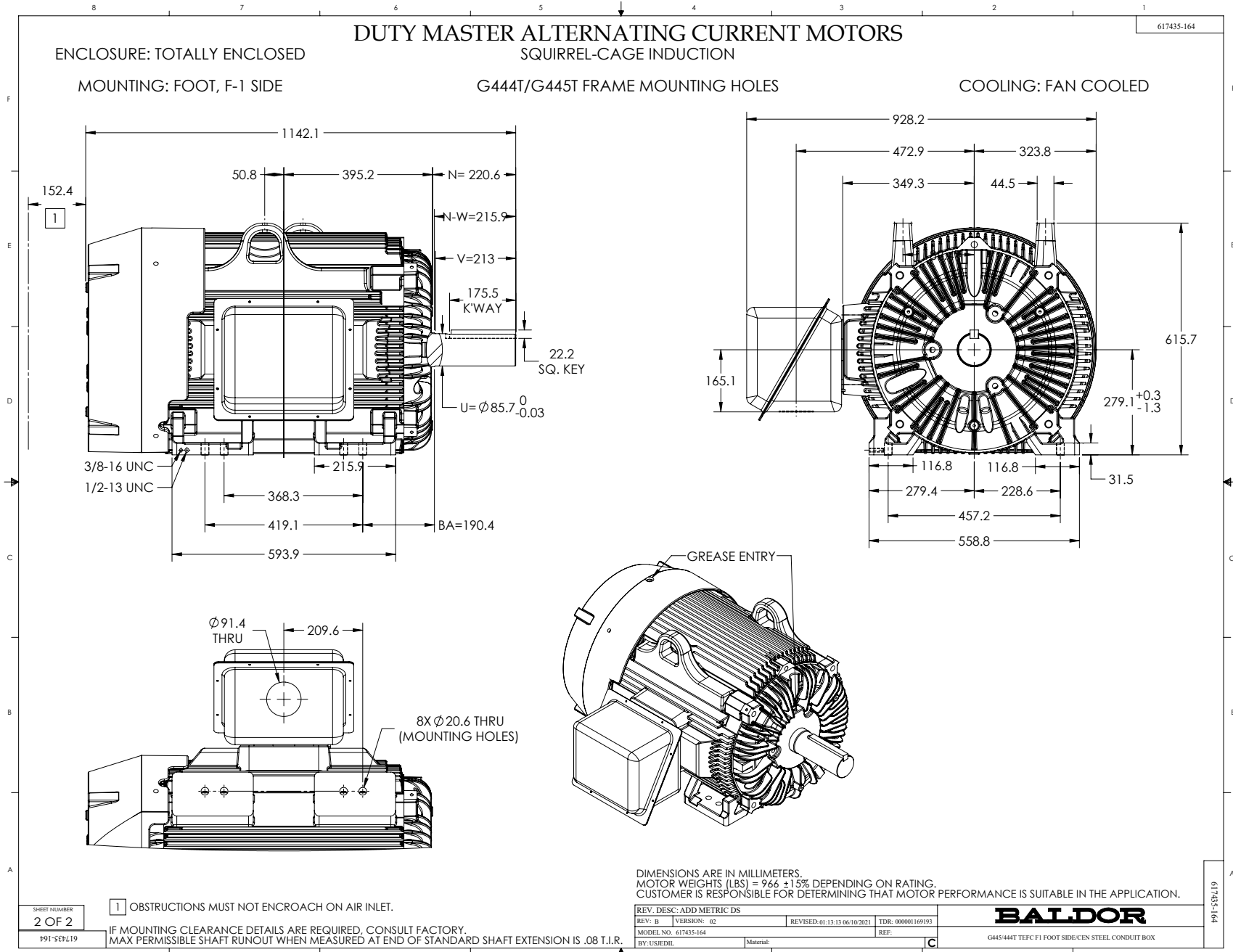
AMPERES SHOWN FOR **575** VOLT CONNECTION, IF OTHER VOLTAGE CONNECTIONS ARE AVAILABLE, THE AMPERES WILL VARY INVERSELY WITH THE RATED VOLTAGE.



DR. BY C. JAMISON
 CK. BY W. SMITH
 App. BY W. SMITH
 DATE 1/8/11

A-C MOTOR PERFORMANCE CURVES
A44WG3784-R001
 ISSUE DATE 06/18/18





416820-036

A-C MOTOR
CONNECTION DIAGRAM
STANDARD 3 LEAD CONNECTED



(N.P. 1575-BA)

416820-036

REV. DESC: LOADED TO BUS, C/R 335225		
REV. LTR: -	VERSION: 00	TDR: 000000538207
FILE: \MGA\00000\682	REVISED: 11:54:06 04/30/2010	
MTL: -	BY: RAGRA	

BALDOR

CONN DIAG - STANDARD 3 LEAD
SH 1 of 1