



Customer information packet

EM3212T-8

5HP, 3450RPM, 3PH, 60HZ, 182T, 3622M, OPSB, F1

Class - None

Division - Not Applicable

Specifications

Enclosure	OPSB
Frame	182T
Frame Material	Steel
Frequency	60.00 Hz
Haz Area Class and Group	None
Haz Area Division	Not Applicable
Motor Letter Type	Three Phase
Output @ Frequency	5.000 HP @ 60 HZ
Phase	3
Synchronous Speed @ Frequency	3600 RPM @ 60 HZ
Voltage @ Frequency	200.0 V @ 60 HZ
Agency Approvals	CSA EEV CURUSEEV NEMA PREMIUM NEMA_PREMIUM UR
Ambient Temperature	40 °C
Auxiliary Box	NO AUXILLARY BOX
Auxiliary Box Lead Termination	None
Base Indicator	Rigid
Bearing Grease Type	Polyrex EM (-20F +300F)
Blower	None
Current @ Voltage	13.800 A @ 200.0 V
Design Code	A
Drip Cover	No Drip Cover
Duty Rating	CONT
Efficiency @ 100% Load	86.5 %
Electrically Isolated Bearing	Not Electrically Isolated
Feedback Device	NO FEEDBACK
Front Face Code	Standard
Front Shaft Indicator	None
Heater Indicator	No Heater

Part detail

Revision	R
Type	AC
Mech. spec.	36B101
Base	
Status	PRD/A
Elec. spec.	36WGS553
Layout	36LYB101
Eff. date	10-14-2024
CD Diagram	CD0006
Poles	02
Leads	3#14
Proprietary	False
Created date	08-01-2015

High Voltage Full Load Amps	13.8 a
Insulation Class	F
Inverter Code	Inverter Ready
IP Rating	NONE
KVA Code	K
Lifting Lugs	No Lifting Lugs
Locked Bearing Indicator	No Locked Bearing
Motor Lead Exit	Ko Box
Motor Lead Quantity/Wire Size	3 @ 14 AWG
Motor Lead Termination	Flying Leads
Motor Standards	NEMA
Motor Type	3622M
Mounting Arrangement	F1
Number of Poles	2
Overall Length	13.62 IN
Power Factor	91
Product Family	General Purpose
Pulley End Bearing Type	Ball
Pulley Face Code	Standard
Pulley Shaft Indicator	Standard
Rodent Screen	None
RoHS Status	ROHS COMPLIANT
Service Factor	1.15
Shaft Diameter	1.125 IN
Shaft Extension Location	Pulley End
Shaft Ground Indicator	No Shaft Grounding
Shaft Rotation	Reversible
Shaft Slinger Indicator	No Slinger
Speed	3450 rpm
Speed Code	Single Speed
Starting Method	Direct on line
Thermal Device - Bearing	None
Thermal Device - Winding	None
Vibration Sensor Indicator	No Vibration Sensor

Winding Thermal 1

None

Winding Thermal 2

None

Nameplate

NP3553L									
CAT.NO.	EM3212T-8								
SPEC	36B101S553G1								
HP	5								
VOLTS	200								
AMPS	13.8								
RPM	3450								
FRAME	182T		HZ	60		PH	3		
SF	1.15	CODE	K	DES	A	CLASS	F		
NEMA NOM. EFF	86.5	PF	91						
RATING	40C AMB-CONT								
CC	010A								
ENCL	OPSB	SER							
DE	6206		ODE	6205					
VPWM INVERTER READY									
CT30-60(2:1) VT3-60(20:1)									

AC Induction Motor Performance Data

Record # 61408

Typical performance - not guaranteed values

Winding: 36WGS553-R001		Type: 3622M		Enclosure: OPSB	
Nameplate Data			200 V, 60 Hz: Single Voltage Motor		
Rated Output (HP)	5	Full Load Torque	7.66 LB-FT		
Volts	200	Start Configuration	direct on line		
Full Load Amps	13.8	Breakdown Torque	30.5 LB-FT		
R.P.M.	3450	Pull-up Torque	18 LB-FT		
Hz	60	Locked-rotor Torque	22.4 LB-FT		
NEMA Design Code	A	Starting Current	116 A		
Service Factor (S.F.)	1.15	No-load Current	4.28 A		
NEMA Nom. Eff.	86.5	Line-line Res. @ 25°C	0.555 Ω		
Rating - Duty	40C AMB-CONT	Temp. Rise @ Rated Load	33°C		
S.F. Amps		Temp. Rise @ S.F. Load	41°C		
		Locked-rotor Power Factor	49.2		
		Rotor inertia	0.103 LB-FT ²		

Load Characteristics 200 V, 60 Hz, 5 HP

% of Rated Load	25	50	75	100	125	150	S.F.
Power Factor	63	81	88	91	92	93	92
Efficiency	81.3	86.7	87.8	86.9	85.6	83.7	86.1
Speed	3567	3536	3505	3468	3428	3385	3444
Line amperes	5.48	7.79	10.6	13.7	17.2	20.8	15.8

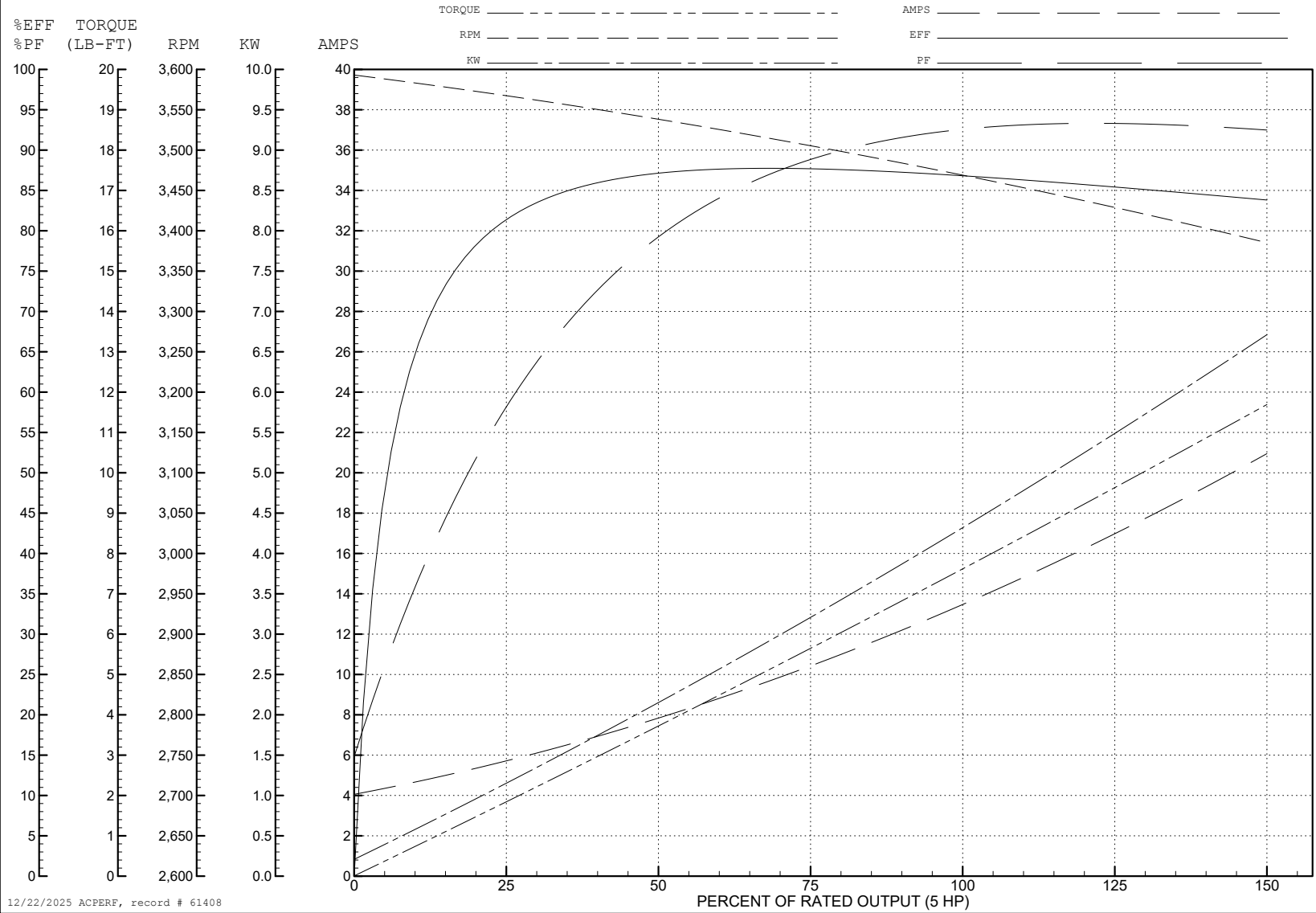
ABB Motors and Mechanical Inc.

WINDING # 36WGS553

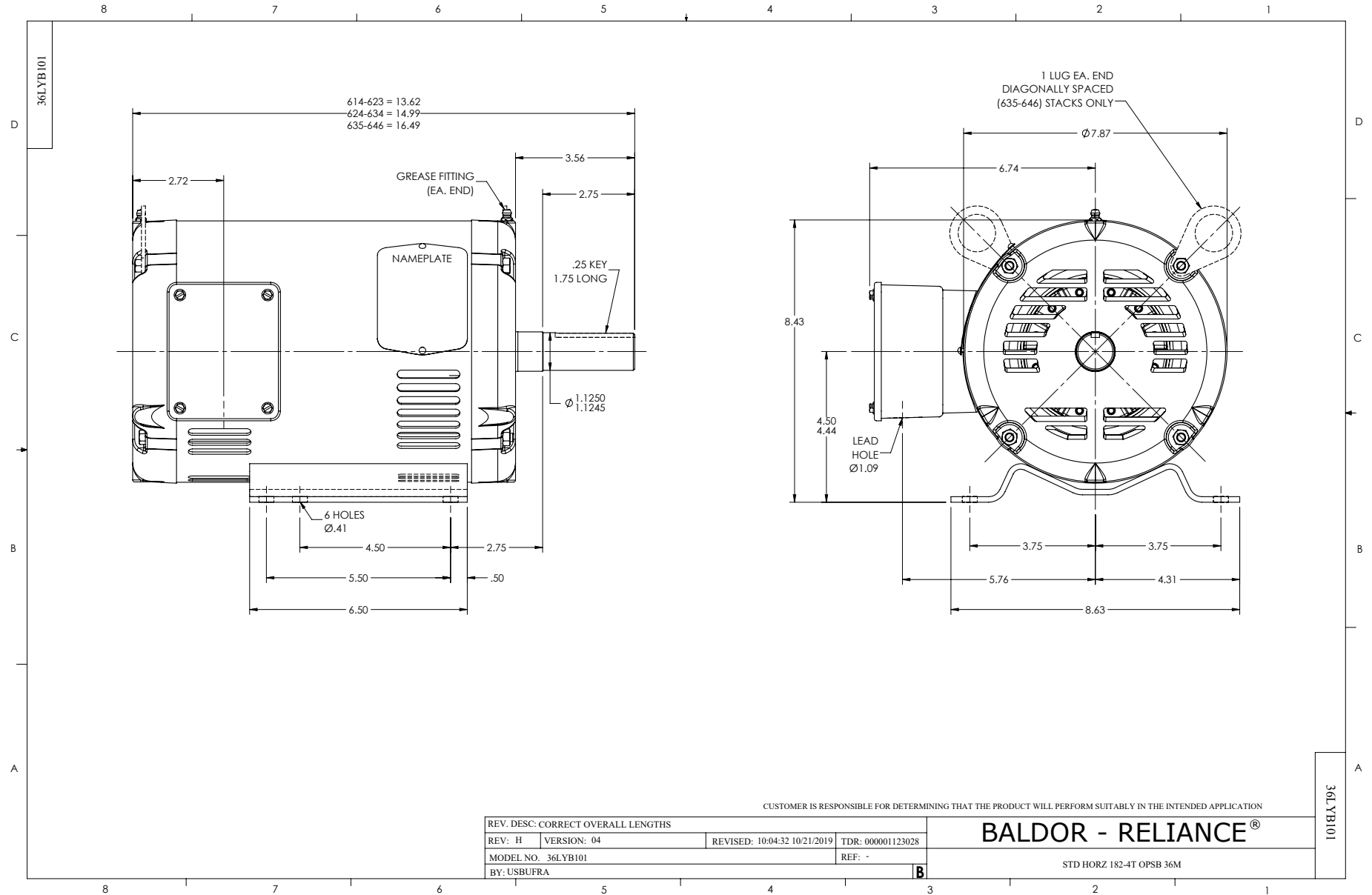
5 HP 3 PH 60 HZ 3450 RPM 200 V 3622M

Typical performance - not guaranteed values.

TORQUES (LB-FT): PO=30.5 PU=18 LR=22.4 LRA=116



12/22/2025 ACPERF, record # 61408



CD0006



NOTES:

1. THREE LEAD MOTOR MAY BE EITHER WYE CONNECTED OR DELTA CONNECTED.
2. INTERCHANGE ANY TWO LINE LEADS TO REVERSE ROTATION.
3. OPTIONAL THERMOSTATS ARE PROVIDED WHEN SPECIFIED.
4. ACTUAL NUMBER OF INTERNAL PARALLEL CIRCUITS MAY VARY.
5. LEAD COLORS ARE OPTIONAL. LEADS MUST BE NUMBERED AS SHOWN.

CD0006

REV. DESC: ADD CLASS CONN00000007		
REV. LTR: E	VERSION: 01	TDR: 000001099922
FILE: \AAA\00005\141	REVISED: 10:24:49 02/19/2019	BY: ENBRIRO
MTL: -	© □	

BALDOR - RELIANCE®

3PH, SV, 3 LEADS, WYE OR DELTA CONNECTED

SH 1 of 1