

BALDOR • RELIANCE

Customer information packet

EM2543T-12

50HP, 1775RPM, 3PH, 60HZ, 326T, 4256M, OPSB, F1

Specifications

Enclosure	OPSB
Frame	326T
Frame Material	Steel
Frequency	60.00 Hz
Motor Letter Type	Three Phase
Output @ Frequency	50.000 HP @ 60 HZ
Phase	3
Synchronous Speed @ Frequency	1800 RPM @ 60 HZ
Voltage @ Frequency	230.0 V @ 60 HZ 460.0 V @ 60 HZ
Agency Approvals	CSA EEV NEMA PREMIUM NEMA_PREMIUM UR
Ambient Temperature	40 °C
Auxiliary Box	NO AUXILLARY BOX
Auxiliary Box Lead Termination	None
Base Indicator	Rigid
Bearing Grease Type	Polyrex EM (-20F +300F)
Blower	None
Current @ Voltage	122.000 A @ 230.0 V 61.000 A @ 460.0 V
Design Code	B
Drip Cover	No Drip Cover
Duty Rating	CONT
Efficiency @ 100% Load	94.5 %
Electrically Isolated Bearing	Not Electrically Isolated
Feedback Device	NO FEEDBACK
Front Face Code	Standard
Front Shaft Indicator	None
Heater Indicator	No Heater
High Voltage Full Load Amps	61.0 a

Part detail

Revision	AE
Type	AC
Mech. spec.	42F56
Base	
Status	PRD/A
Elec. spec.	42WGW480
Layout	42LYF056
Eff. date	06-27-2024
CD Diagram	CD0104
Poles	04
Leads	12#8
Proprietary	False
Created date	01-01-0001

Insulation Class	F
Inverter Code	Inverter Ready
KVA Code	H
Lifting Lugs	Standard Lifting Lugs
Locked Bearing Indicator	No Locked Bearing
Motor Lead Exit	Ko Box
Motor Lead Quantity/Wire Size	12 @ 8 AWG
Motor Lead Termination	Flying Leads
Motor Standards	NEMA
Motor Type	4256M
Mounting Arrangement	F1
Number of Poles	4
Overall Length	27.69 IN
Power Factor	81
Product Family	General Purpose
Pulley End Bearing Type	Ball
Pulley Face Code	Standard
Pulley Shaft Indicator	Standard
Rodent Screen	None
Service Factor	1.15
Shaft Diameter	2.125 IN
Shaft Extension Location	Pulley End
Shaft Ground Indicator	No Shaft Grounding
Shaft Rotation	Reversible
Shaft Slinger Indicator	No Slinger
Speed	1775 rpm
Speed Code	Single Speed
Starting Method	Wye Start - Delta Run
Thermal Device - Bearing	None
Thermal Device - Winding	None
Vibration Sensor Indicator	No Vibration Sensor
Winding Thermal 1	None
Winding Thermal 2	None

Nameplate

NP3554LUA

CAT.NO.	EM2543T-12	P/N		ENCL	OPSB
SPEC.	42F056W480	CC	010A	FRAME	326T
HP	50	CLASS	F	HZ	60
RPM	1775	PH	3	DES	B
VOLTS	230/460	CODE	H	ODE BRG	6311
AMPS	122/61	DE BRG			6312
RATING	40C AMB-CONT	NEMA-NOM-EFF	94.5	GREASE	POLYREX EM
PF	81	SER.F.	1.15	CT30-60(2:1) VT3-60(20:1)	
USABLE AT	50HZ 50HP 190/380V 136/68A		SF 1.0		
HTR-VOLTS	HTR-AMPS	MAX. SPACE HEATER TEMP.			

AC Induction Motor Performance Data

Record # 13699

Typical performance - not guaranteed values

Winding: 42WGW480-R001		Type: 4256M		Enclosure: OPSB	
Nameplate Data			460 V, 60 Hz: High Voltage Connection		
Rated Output (HP)	50		Full Load Torque	148 LB-FT	
Volts	230/460		Start Configuration	direct on line	
Full Load Amps	122/61		Breakdown Torque	524 LB-FT	
R.P.M.	1775		Pull-up Torque	357 LB-FT	
Hz	60 Phase	3	Locked-rotor Torque	328 LB-FT	
NEMA Design Code	B KVA Code	H	Starting Current	422 A	
Service Factor (S.F.)	1.15		No-load Current	25.9 A	
NEMA Nom. Eff.	94.5 Power Factor	81	Line-line Res. @ 25°C	0.112 Ω	
Rating - Duty	40C AMB-CONT		Temp. Rise @ Rated Load	18°C	
S.F. Amps			Temp. Rise @ S.F. Load	21°C	
			Locked-rotor Power Factor	27	
			Rotor inertia	7.46 LB-FT ²	

Load Characteristics 460 V, 60 Hz, 50 HP

% of Rated Load	25	50	75	100	125	150	S.F.
Power Factor	45	67	77	82	84	84	83
Efficiency	89.6	93.5	94.4	94.5	94.1	93.7	94.3
Speed	1794	1789	1784	1779	1772	1767	1775
Line amperes	29.4	37.6	48.4	60.8	74.3	88.9	68.9

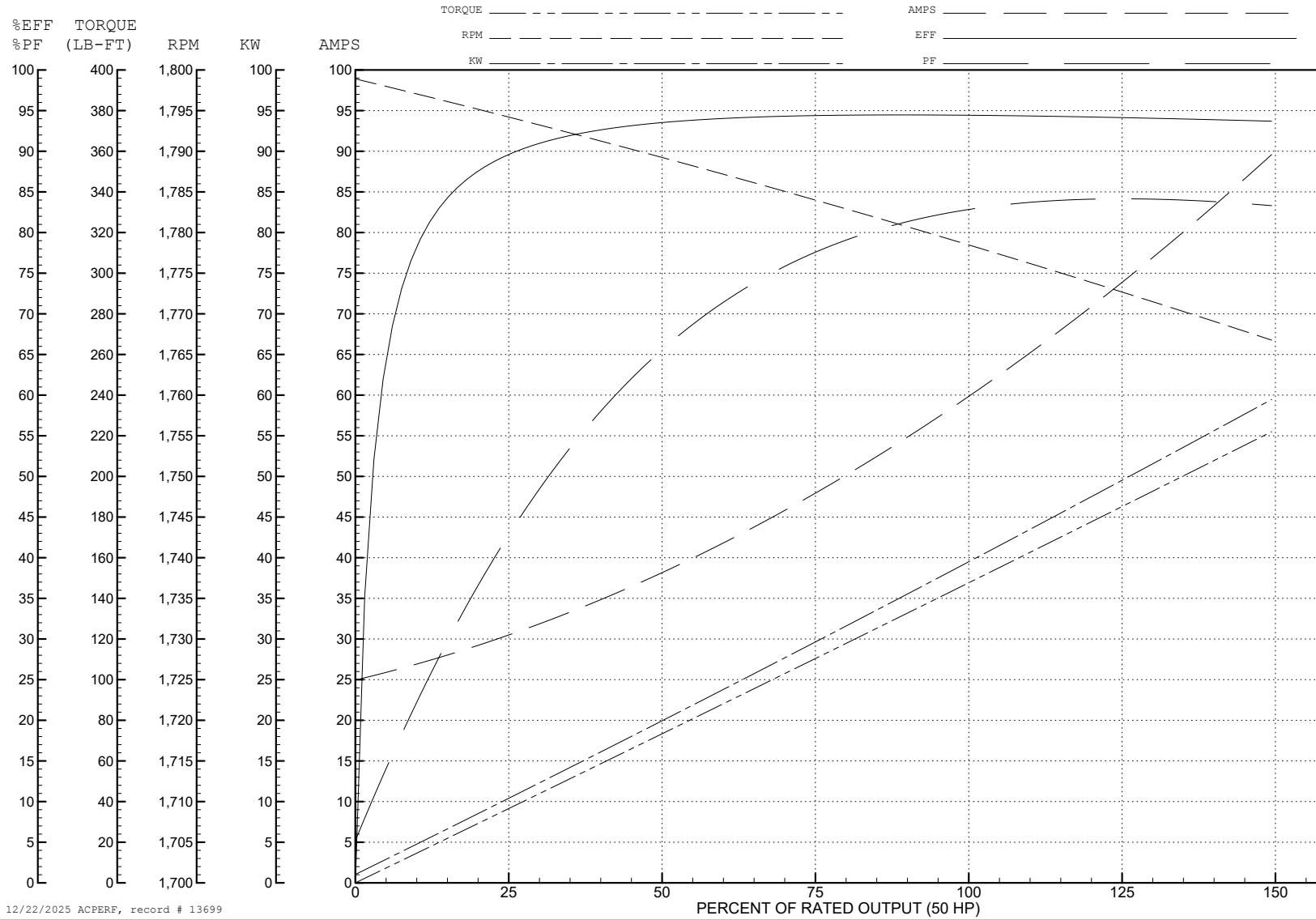
ABB Motors and Mechanical Inc.

WINDING # 42WGW480

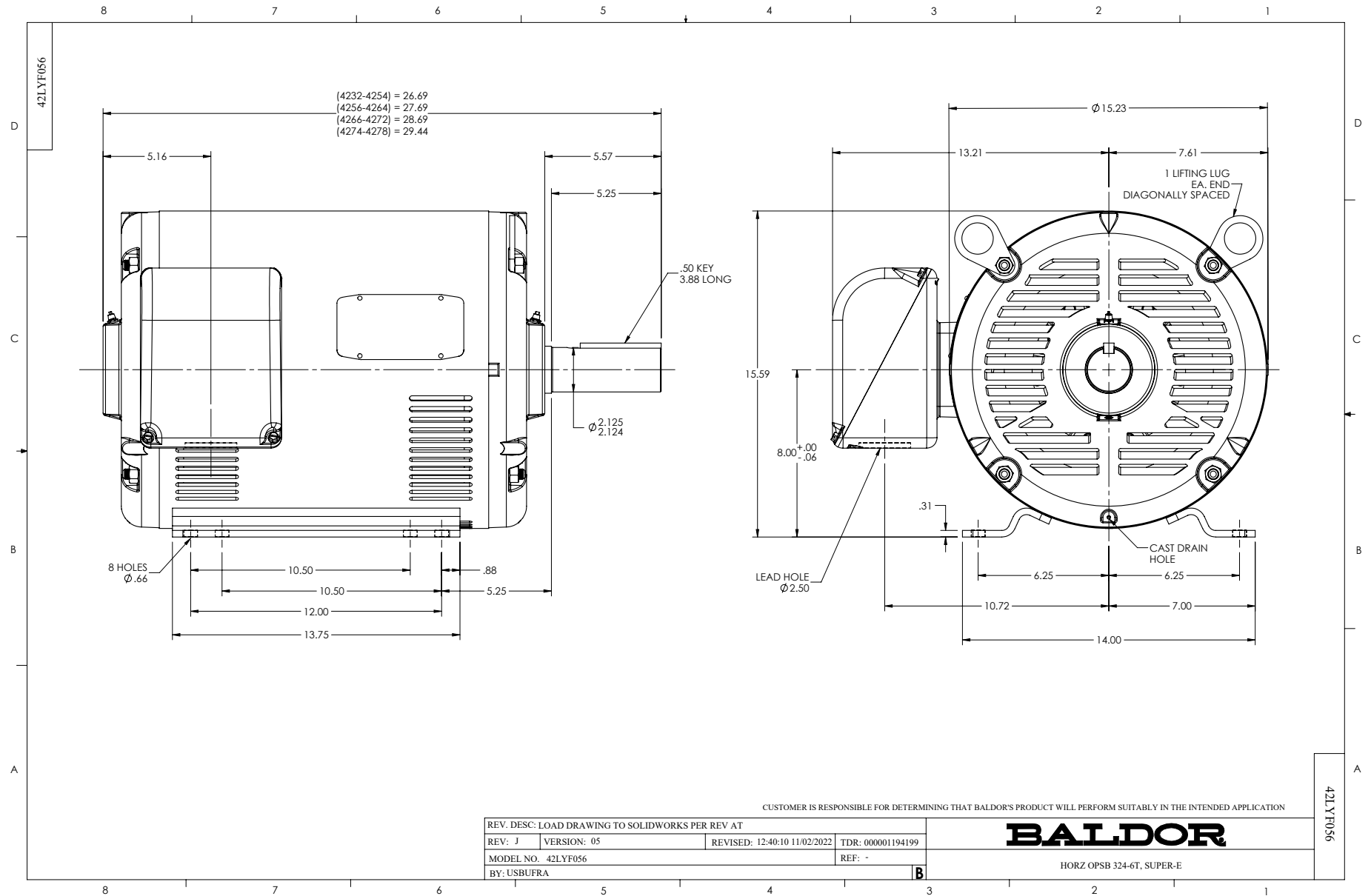
50 HP 3 PH 60 HZ 1775 RPM 460 V 4256M

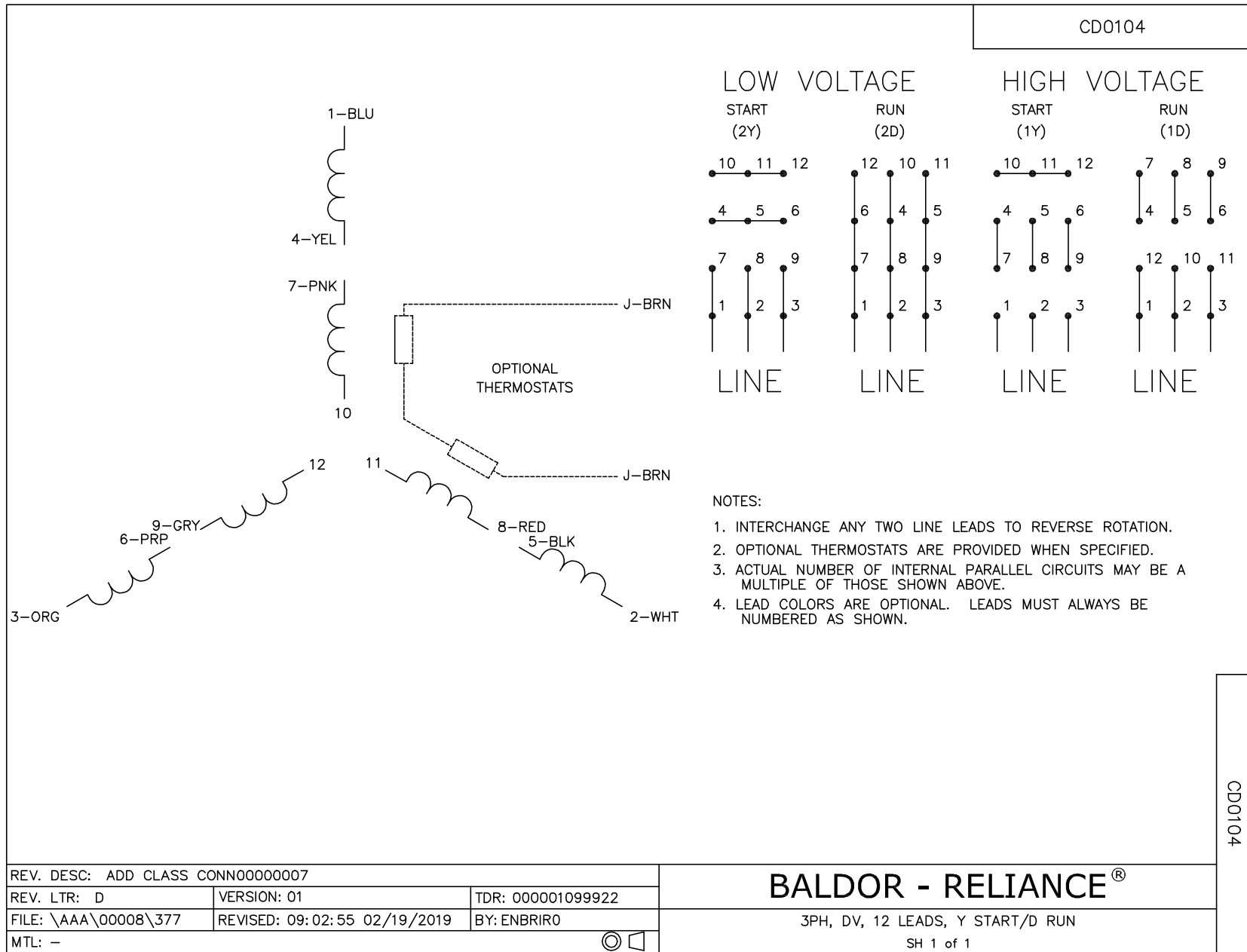
Typical performance - not guaranteed values.

TORQUES (LB-FT): PO=524 PU=357 LR=328 LRA=422



12/22/2025 ACPERF, record # 13699





CD0104