

BALDOR • RELIANCE

Customer information packet

EM2531T-12

25HP, 1770RPM, 3PH, 60HZ, 284T, 4046M, OPSB, F1

Specifications

Enclosure	OPSB
Frame	284T
Frame Material	Steel
Frequency	60.00 Hz
Motor Letter Type	Three Phase
Output @ Frequency	25.000 HP @ 60 HZ
Phase	3
Synchronous Speed @ Frequency	1800 RPM @ 60 HZ
Voltage @ Frequency	230.0 V @ 60 HZ 460.0 V @ 60 HZ
Agency Approvals	CSA EEV NEMA PREMIUM NEMA_PREMIUM UR
Ambient Temperature	40 °C
Auxiliary Box	NO AUXILLARY BOX
Auxiliary Box Lead Termination	None
Base Indicator	Rigid
Bearing Grease Type	Polyrex EM (-20F +300F)
Blower	None
Current @ Voltage	30.000 A @ 460.0 V 60.000 A @ 230.0 V
Design Code	B
Drip Cover	No Drip Cover
Duty Rating	CONT
Efficiency @ 100% Load	93.6 %
Electrically Isolated Bearing	Not Electrically Isolated
Feedback Device	NO FEEDBACK
Front Face Code	Standard
Front Shaft Indicator	None
Heater Indicator	No Heater
High Voltage Full Load Amps	30.0 a

Part detail

Revision	W
Type	AC
Mech. spec.	40G48
Base	
Status	PRD/A
Elec. spec.	40WGX794
Layout	40LYG048
Eff. date	09-02-2025
CD Diagram	CD0104
Poles	04
Leads	12#10
Proprietary	False
Created date	01-22-2013

Insulation Class	F
Inverter Code	Inverter Ready
IP Rating	NONE
KVA Code	G
Lifting Lugs	Standard Lifting Lugs
Locked Bearing Indicator	No Locked Bearing
Motor Lead Exit	Ko Box
Motor Lead Quantity/Wire Size	12 @ 10 AWG
Motor Lead Termination	Flying Leads
Motor Standards	NEMA
Motor Type	4050M
Mounting Arrangement	F1
Number of Poles	4
Overall Length	25.06 IN
Power Factor	82
Product Family	General Purpose
Pulley End Bearing Type	Ball
Pulley Face Code	Standard
Pulley Shaft Indicator	Standard
Rodent Screen	None
Service Factor	1.15
Shaft Diameter	1.875 IN
Shaft Extension Location	Pulley End
Shaft Ground Indicator	No Shaft Grounding
Shaft Rotation	Reversible
Shaft Slinger Indicator	No Slinger
Speed	1770 rpm
Speed Code	Single Speed
Starting Method	Wye Start - Delta Run
Thermal Device - Bearing	None
Thermal Device - Winding	None
Vibration Sensor Indicator	No Vibration Sensor
Winding Thermal 1	None
Winding Thermal 2	None

Nameplate

NP3554LUA

CAT.NO.	EM2531T-12	P/N		ENCL	OPSB
SPEC.	40G048X794	CC	010A	FRAME	284T
HP	25	CLASS	F	HZ	60
RPM	1770	PH	3	DES	B
VOLTS	230/460	CODE	G	ODE BRG	6309
AMPS	60/30	DE BRG	6311		
RATING	40C AMB-CONT	NEMA-NOM-EFF	93.6	GREASE	POLYREX EM
PF	82	SER.F.	1.15	CT30-60(2:1) VT3-60(20:1)	
USABLE AT	50HZ 25HP 190/380V 72/36A		SF 1.0		
HTR-VOLTS	HTR-AMPS	MAX. SPACE HEATER TEMP.			

AC Induction Motor Performance Data

Record # 41055

Typical performance - not guaranteed values

Winding: 40WGX794-R001		Type: 4050M	Enclosure: OPSB	
Nameplate Data			460 V, 60 Hz: High Voltage Connection	
Rated Output (HP)	25	Full Load Torque	74.1 LB-FT	
Volts	230/460	Start Configuration	direct on line	
Full Load Amps	60/30	Breakdown Torque	199 LB-FT	
R.P.M.	1770	Pull-up Torque	86.8 LB-FT	
Hz	60 Phase	Locked-rotor Torque	118 LB-FT	
NEMA Design Code	B KVA Code	Starting Current	184 A	
Service Factor (S.F.)	1.15	No-load Current	12.2 A	
NEMA Nom. Eff.	93.6 Power Factor	Line-line Res. @ 25°C	0.315 Ω	
Rating - Duty	40C AMB-CONT	Temp. Rise @ Rated Load	28°C	
S.F. Amps		Temp. Rise @ S.F. Load	35°C	
		Locked-rotor Power Factor	33	
		Rotor inertia	3.96 LB-FT ²	

Load Characteristics 460 V, 60 Hz, 25 HP

% of Rated Load	25	50	75	100	125	150	S.F.
Power Factor	47	70	79	83	84	84	84
Efficiency	89.7	93.5	94	93.9	93.4	92.4	93.6
Speed	1793	1787	1780	1773	1764	1755	1768
Line amperes	13.9	18.2	23.7	30.1	37.1	44.9	34.3

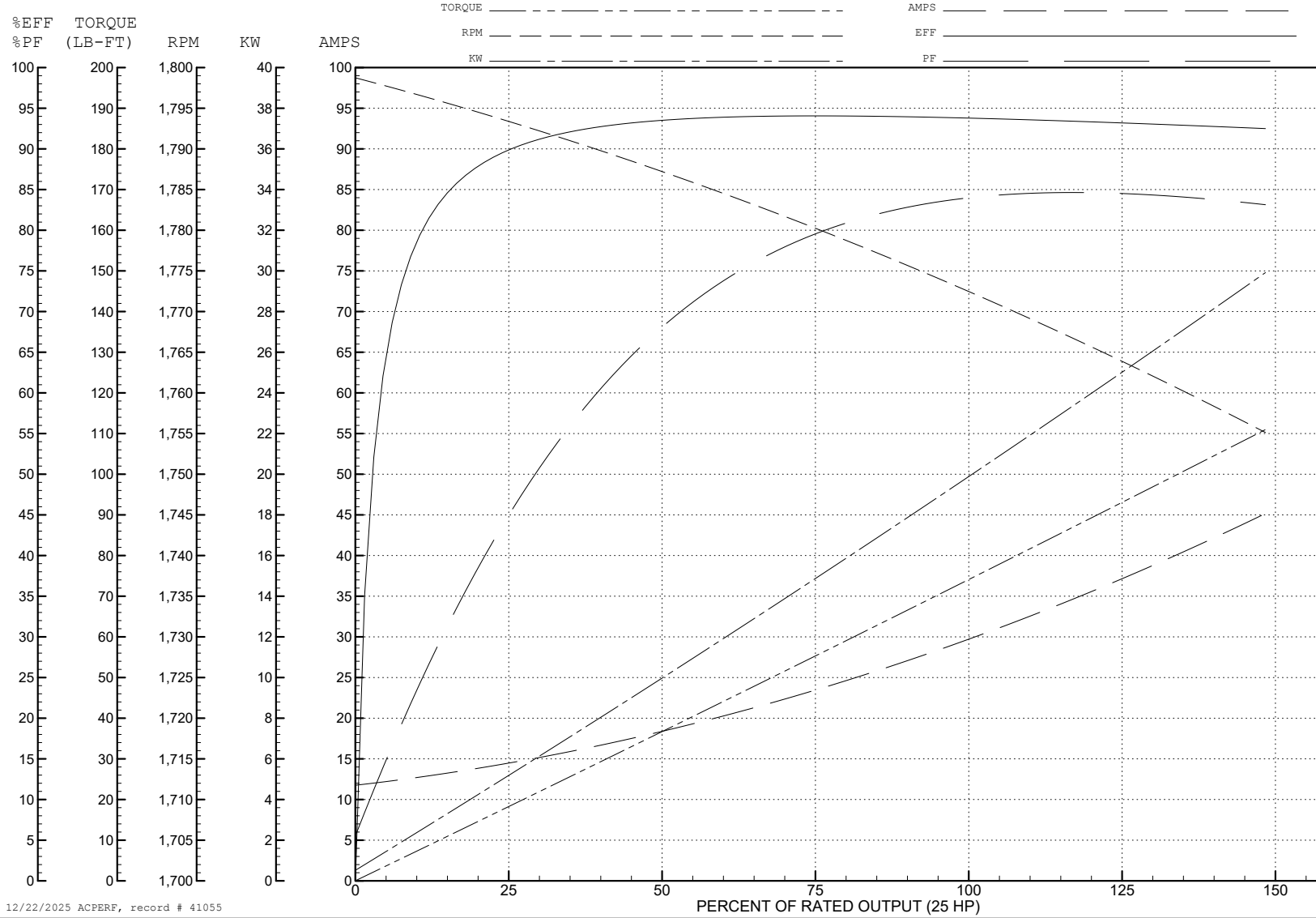
ABB Motors and Mechanical Inc.

WINDING # 40WGX794

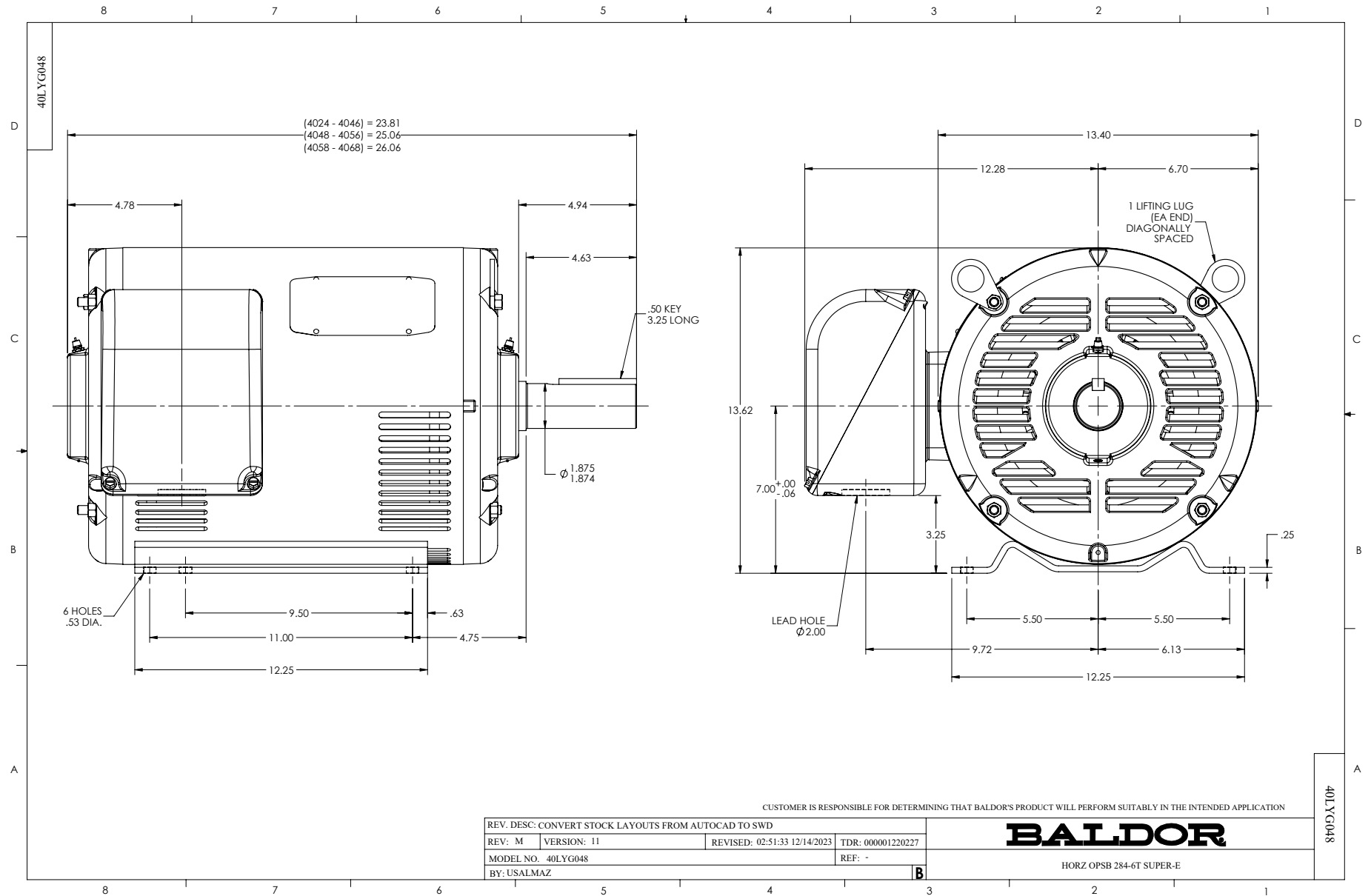
Typical performance - not guaranteed values.

25 HP 3 PH 60 HZ 1770 RPM 460 V 4050M

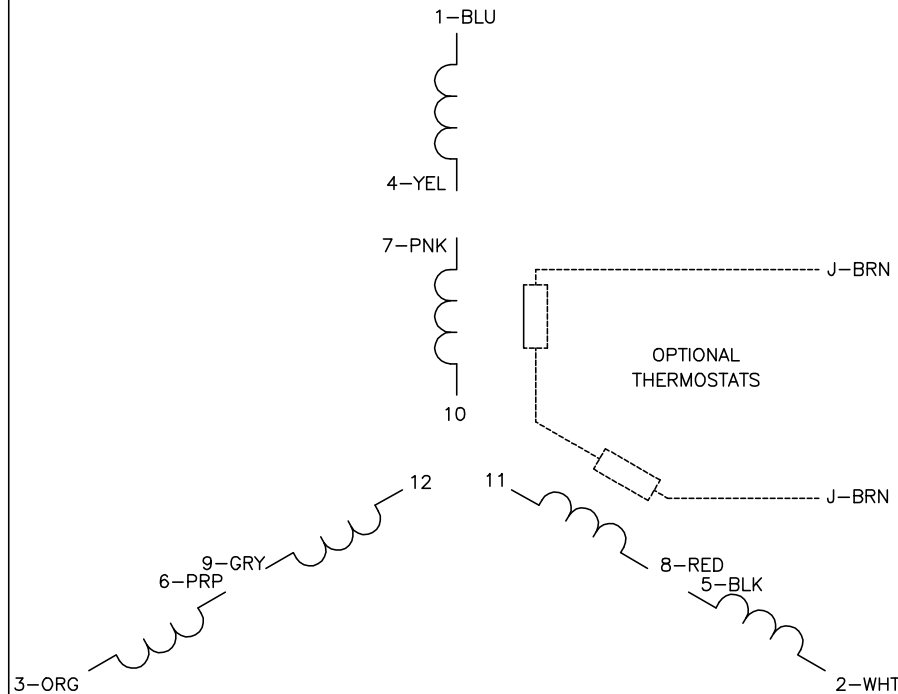
TORQUES (LB-FT): PO=199 PU=86.8 LR=118 LRA=184



12/22/2025 ACPERF, record # 41055

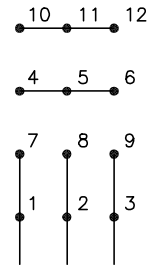


CD0104



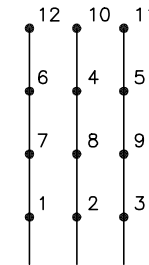
LOW VOLTAGE

START (2Y)



LINE

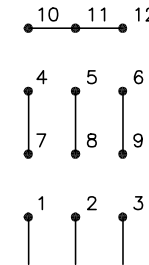
RUN (2D)



LINE

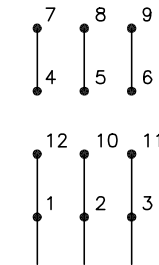
HIGH VOLTAGE

START (1Y)



LINE

RUN (1D)



LINE

NOTES:

1. INTERCHANGE ANY TWO LINE LEADS TO REVERSE ROTATION.
2. OPTIONAL THERMOSTATS ARE PROVIDED WHEN SPECIFIED.
3. ACTUAL NUMBER OF INTERNAL PARALLEL CIRCUITS MAY BE A MULTIPLE OF THOSE SHOWN ABOVE.
4. LEAD COLORS ARE OPTIONAL. LEADS MUST ALWAYS BE NUMBERED AS SHOWN.

CD0104

REV. DESC: ADD CLASS CONN00000007		
REV. LTR: D	VERSION: 01	TDR: 000001099922
FILE: \AAA\00008\377	REVISED: 09:02:55 02/19/2019	BY: ENBRIRO
MTL: -	© □	

BALDOR - RELIANCE®

3PH, DV, 12 LEADS, Y START/D RUN

SH 1 of 1