

**BALDOR • RELIANCE**

---

# Customer information packet

## EHF3157T

2HP, 1750RPM, 3PH, 60HZ, 145T, 3526M, OPSB, F2

Class - None

Division - Not Applicable

## Specifications

|                                |   |
|--------------------------------|---|
| Enclosure                      | OPSB  |
| Frame                          | 145T  |
| Frame Material                 | Steel   |
| Frequency                      | 60.00 Hz  |
| Haz Area Class and Group       | None  |
| Haz Area Division              | Not Applicable  |
| Motor Letter Type              | Three Phase   |
| Output @ Frequency             | 2.000 HP @ 60 HZ  |
| Phase                          | 3   |
| Synchronous Speed @ Frequency  | 1800 RPM @ 60 HZ  |
| Voltage @ Frequency            | 230.0 V @ 60 HZ<br>460.0 V @ 60 HZ                          |
| Agency Approvals               | UR<br>CSA   |
| Ambient Temperature            | 40 °C   |
| Auxiliary Box                  | NO AUXILLARY BOX  |
| Auxiliary Box Lead Termination | None  |
| Base Indicator                 | Rigid   |
| Bearing Grease Type            | Polyrex EM (-20F +300F)                                     |
| Blower                         | None  |
| Current @ Voltage              | 2.900 A @ 460.0 V<br>5.800 A @ 208.0 V<br>5.800 A @ 230.0 V |
| Design Code                    | B   |
| Drip Cover                     | No Drip Cover   |
| Duty Rating                    | CONT  |
| Efficiency @ 100% Load         | 86.5 %  |
| Electrically Isolated Bearing  | Not Electrically Isolated                                   |
| Feedback Device                | NO FEEDBACK   |
| Front Face Code                | Standard  |
| Front Shaft Indicator          | None  |
| Heater Indicator               | No Heater   |

## Part detail

|              |            |
|--------------|------------|
| Revision     | M          |
| Type         | AC         |
| Mech. spec.  | 35VV803    |
| Base         |            |
| Status       | PRD/A      |
| Elec. spec.  | 35WGM496   |
| Layout       | 35LYVV803  |
| Eff. date    | 09-05-2025 |
| CD Diagram   | CD0005     |
| Poles        | 04         |
| Leads        | 9#18       |
| Proprietary  | False      |
| Created date | 09-26-2013 |

|                               |                       |
|-------------------------------|-----------------------|
| High Voltage Full Load Amps   | 2.9 a                 |
| Insulation Class              | F                     |
| Inverter Code                 | Inverter Ready        |
| KVA Code                      | K                     |
| Lifting Lugs                  | Vertical Lifting Lugs |
| Locked Bearing Indicator      | No Locked Bearing     |
| Motor Lead Exit               | Ko Box                |
| Motor Lead Quantity/Wire Size | 9 @ 18 AWG            |
| Motor Lead Termination        | Flying Leads          |
| Motor Standards               | NEMA                  |
| Motor Type                    | 3524M                 |
| Mounting Arrangement          | F2                    |
| Number of Poles               | 4                     |
| Overall Length                | 11.62 IN              |
| Power Factor                  | 76                    |
| Product Family                | General Purpose       |
| Pulley End Bearing Type       | Ball                  |
| Pulley Face Code              | Standard              |
| Pulley Shaft Indicator        | Standard              |
| Rodent Screen                 | None                  |
| RoHS Status                   | ROHS COMPLIANT        |
| Service Factor                | 1.15                  |
| Shaft Diameter                | 0.875 IN              |
| Shaft Extension Location      | Pulley End            |
| Shaft Ground Indicator        | No Shaft Grounding    |
| Shaft Rotation                | Reversible            |
| Shaft Slinger Indicator       | No Slinger            |
| Speed                         | 1750 rpm              |
| Speed Code                    | Single Speed          |
| Starting Method               | Direct on line        |
| Thermal Device - Bearing      | None                  |
| Thermal Device - Winding      | None                  |
| Vibration Sensor Indicator    | No Vibration Sensor   |
| Winding Thermal 1             | None                  |

**Winding Thermal 2**

**None**

---

**Nameplate**

| <b>NP2094E06B03</b> |               |               |                       |             |   |           |     |  |  |
|---------------------|---------------|---------------|-----------------------|-------------|---|-----------|-----|--|--|
| <b>CAT.NO.</b>      | EHFM3157T     |               |                       |             |   |           |     |  |  |
| <b>SPEC.</b>        | 35VV803M496G1 |               |                       |             |   |           |     |  |  |
| <b>HP</b>           | 2             |               |                       |             |   |           |     |  |  |
| <b>VOLTS</b>        | 230/460       |               |                       |             |   |           |     |  |  |
| <b>AMPS</b>         | 5.8/2.9       |               |                       |             |   |           |     |  |  |
| <b>RPM</b>          | 1750          |               |                       |             |   |           |     |  |  |
| <b>FRAME</b>        | 145T          |               | <b>HZ</b>             | 60          |   | <b>PH</b> | 3   |  |  |
| <b>SER.F.</b>       | 1.15          | <b>CODE</b>   | K                     | <b>DES</b>  | B | <b>CL</b> | F   |  |  |
| <b>NEMA-NOM-EFF</b> | 86.5          | <b>PF</b>     | 76                    |             |   |           |     |  |  |
| <b>RATING</b>       | 40C AMB-CONT  |               |                       |             |   |           |     |  |  |
| <b>CC</b>           | 010A          |               | <b>USABLE AT 208V</b> |             |   |           | N/A |  |  |
| <b>DE</b>           | 6205          | <b>ODE</b>    | 6203                  |             |   |           |     |  |  |
| <b>AUTO</b>         | N             | <b>MANUAL</b> | N                     | <b>NONE</b> | Y |           |     |  |  |
| <b>ENCL</b>         | OPSB          | <b>SN</b>     |                       |             |   |           |     |  |  |
| <b>BLANK</b>        | SFA 6.3/3.2   |               |                       |             |   |           |     |  |  |

**AC Induction Motor Performance Data**

Record # 33882

Typical performance - not guaranteed values

| <b>Winding:</b> 35WGM496-R001 |                          | <b>Type:</b> 3528M |  | <b>Enclosure:</b> OPSB   |  |
|-------------------------------|--------------------------|--------------------|--|--------------------------|--|
| <b>Nameplate Data</b>         |                          |                    | <b>460 V, 60 Hz:<br/>High Voltage Connection</b> |                          |  |
| <b>Rated Output (HP)</b>      | 2                        |                    | <b>Full Load Torque</b>                          | 6.02 LB-FT               |  |
| <b>Volts</b>                  | 230/460                  |                    | <b>Start Configuration</b>                       | direct on line           |  |
| <b>Full Load Amps</b>         | 5.8/2.9                  |                    | <b>Breakdown Torque</b>                          | 22.6 LB-FT               |  |
| <b>R.P.M.</b>                 | 1750                     |                    | <b>Pull-up Torque</b>                            | 11.27 LB-FT              |  |
| <b>Hz</b>                     | <b>60 Phase</b>          | 3                  | <b>Locked-rotor Torque</b>                       | 15.4 LB-FT               |  |
| <b>NEMA Design Code</b>       | <b>B KVA Code</b>        | K                  | <b>Starting Current</b>                          | 21.65 A                  |  |
| <b>Service Factor (S.F.)</b>  | 1.15                     |                    | <b>No-load Current</b>                           | 1.63 A                   |  |
| <b>NEMA Nom. Eff.</b>         | <b>86.5 Power Factor</b> | 76                 | <b>Line-line Res. @ 25°C</b>                     | 8.22 Ω                   |  |
| <b>Rating - Duty</b>          | 40C AMB-CONT             |                    | <b>Temp. Rise @ Rated Load</b>                   | 38°C                     |  |
| <b>S.F. Amps</b>              |                          |                    | <b>Temp. Rise @ S.F. Load</b>                    | 45°C                     |  |
|                               |                          |                    | <b>Locked-rotor Power Factor</b>                 | 59.1                     |  |
|                               |                          |                    | <b>Rotor inertia</b>                             | 0.154 lb-ft <sup>2</sup> |  |

**Load Characteristics 460 V, 60 Hz, 2 HP**

| <b>% of Rated Load</b> | <b>25</b> | <b>50</b> | <b>75</b> | <b>100</b> | <b>125</b> | <b>150</b> | <b>S.F.</b> |
|------------------------|-----------|-----------|-----------|------------|------------|------------|-------------|
| <b>Power Factor</b>    | 35        | 56        | 69        | 76         | 81         | 84         | 79          |
| <b>Efficiency</b>      | 77        | 84.7      | 86.8      | 86.6       | 85.8       | 84.3       | 86.1        |
| <b>Speed</b>           | 1789      | 1779      | 1768      | 1756       | 1742       | 1727       | 1748        |
| <b>Line amperes</b>    | 1.75      | 2.01      | 2.37      | 2.85       | 3.37       | 3.96       | 3.16        |

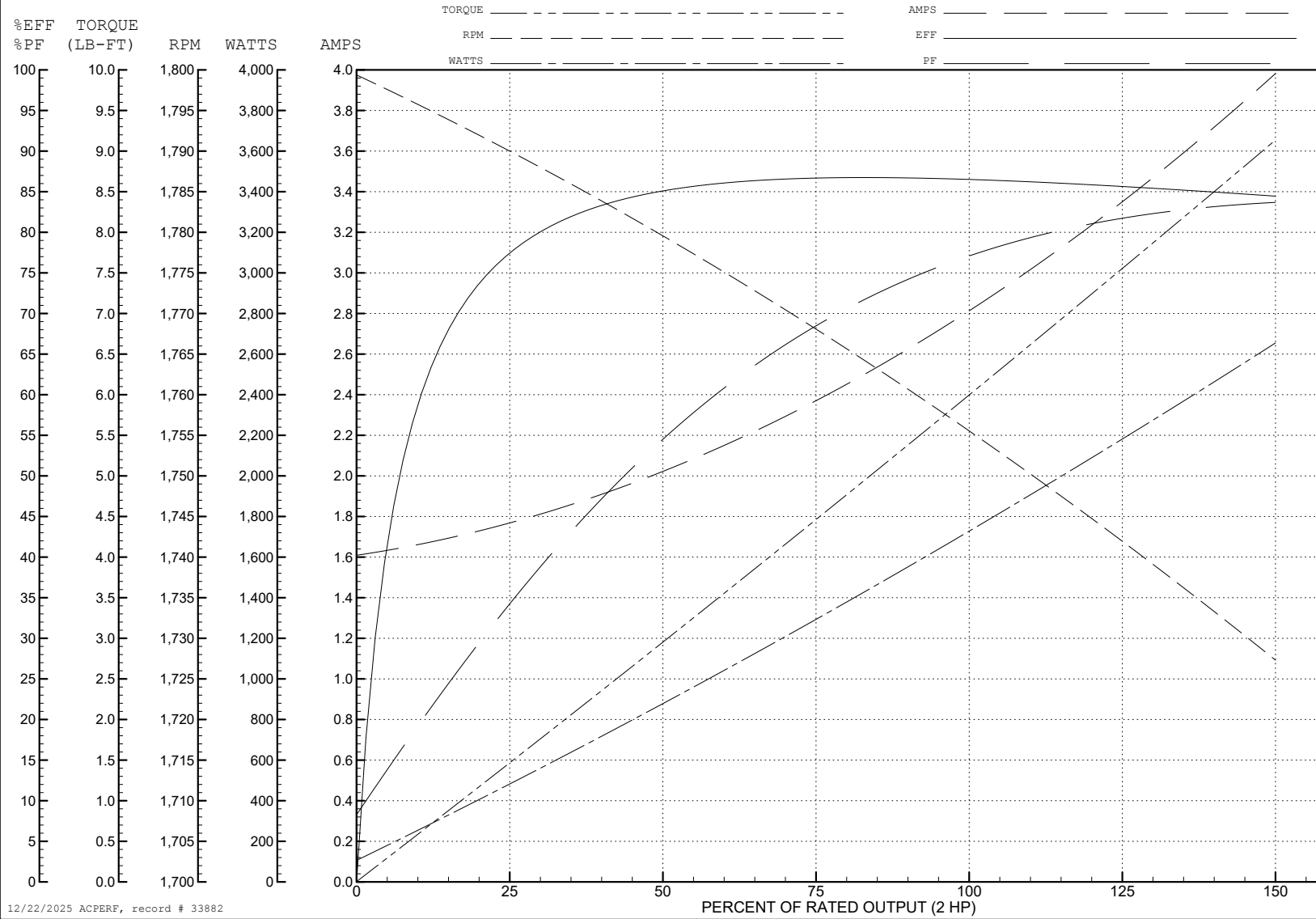
ABB Motors and Mechanical Inc.

WINDING # 35WGM496

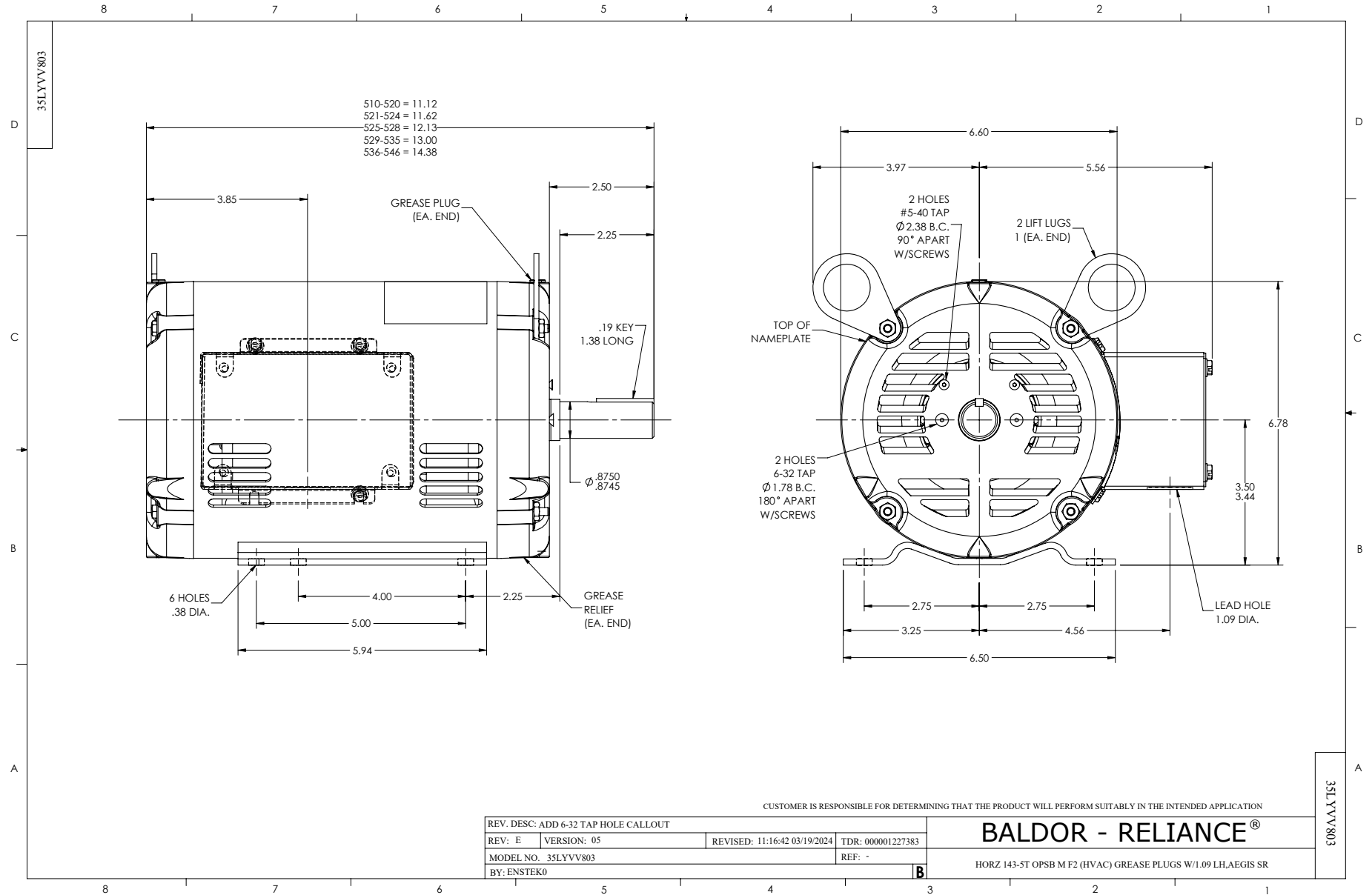
Typical performance - not guaranteed values.

2 HP 3 PH 60 HZ 1750 RPM 460 V 3528M

TORQUES (LB-FT): PO=22.6 PU=11.27 LR=15.4 LRA=21.65

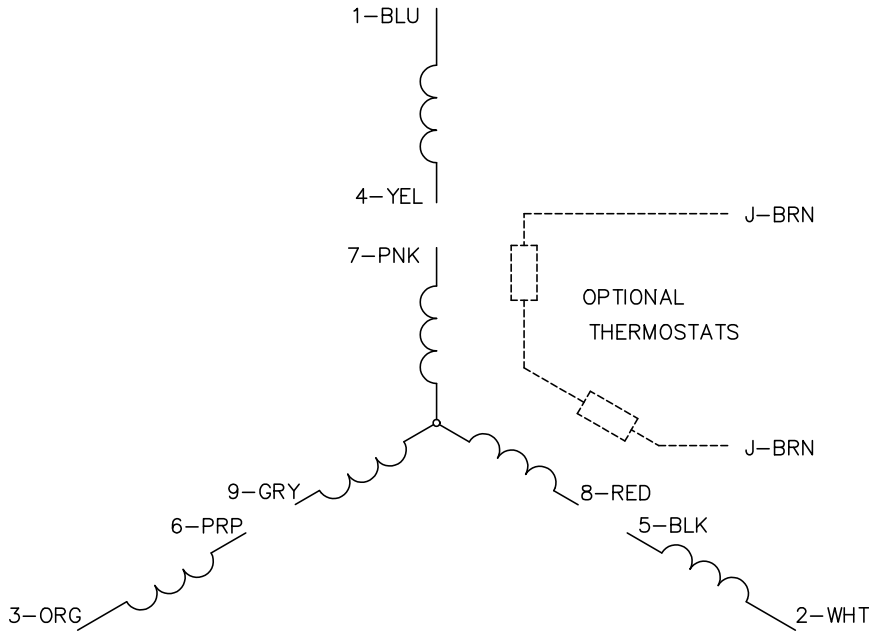


12/22/2025 ACPERF, record # 33882

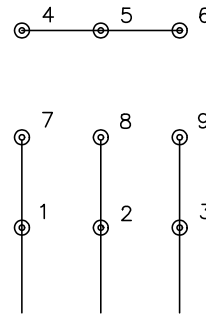




CD0005

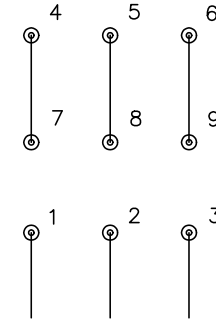


LOW VOLTAGE  
(2Y)



LINE

HIGH VOLTAGE  
(1Y)



LINE

NOTES:

1. INTERCHANGE ANY TWO LINE LEADS TO REVERSE ROTATION.
2. OPTIONAL THERMOSTATS ARE PROVIDED WHEN SPECIFIED.
3. ACTUAL NUMBER OF INTERNAL PARALLEL CIRCUITS MAY BE A MULTIPLE OF THOSE SHOWN ABOVE.
4. LEAD COLORS ARE OPTIONAL. LEADS MUST ALWAYS BE NUMBERED AS SHOWN.

CD0005

REV. DESC: REVISE TO SHOW OPTIONAL COLORS

REV. LTR: E BY: JLP REVISED: 01/19/99 10:15 TDR: 0171435

900000

FILE: AAA00005140

MDL: -

MTL: -

**BALDOR ELECTRIC Co.**

3PH, DV, 9 LEADS