



---

# Customer information packet

## EFM3313T-8

10HP, 1770RPM, 3PH, 60HZ, 213T, 3740M, OPSB, F2

Class - None

Division - Not Applicable

## Specifications

Enclosure	OPSB
Frame	215T
Frame Material	Steel
Frequency	60.00 Hz
Haz Area Class and Group	None
Haz Area Division	Not Applicable
Motor Letter Type	Three Phase
Output @ Frequency	10.000 HP @ 60 HZ
Phase	3
Synchronous Speed @ Frequency	1800 RPM @ 60 HZ
Voltage @ Frequency	200.0 V @ 60 HZ
Agency Approvals	CURUSEEV NEMA PREMIUM NEMA_PREMIUM UR CSA EEV
Ambient Temperature	40 °C
Auxiliary Box	NO AUXILLARY BOX
Auxiliary Box Lead Termination	None
Base Indicator	Rigid
Bearing Grease Type	Polyrex EM (-20F +300F)
Blower	None
Current @ Voltage	29.500 A @ 200.0 V 30.300 A @ 208.0 V
Design Code	A
Drip Cover	No Drip Cover
Duty Rating	CONT
Efficiency @ 100% Load	91.7 %
Electrically Isolated Bearing	Not Electrically Isolated
Feedback Device	NO FEEDBACK
Front Face Code	Standard
Front Shaft Indicator	None

## Part detail

Revision	U
Type	AC
Mech. spec.	37B106
Base	
Status	PRD/A
Elec. spec.	37WGT937
Layout	37LYB106
Eff. date	06-11-2024
CD Diagram	CD0006
Poles	04
Leads	3#10
Proprietary	False
Created date	03-15-2006

Heater Indicator	No Heater
High Voltage Full Load Amps	29.5 a
Insulation Class	F
Inverter Code	Inverter Ready
IP Rating	NONE
KVA Code	J
Lifting Lugs	Standard Lifting Lugs
Locked Bearing Indicator	No Locked Bearing
Motor Lead Exit	Ko Box
Motor Lead Quantity/Wire Size	3 @ 10 AWG
Motor Lead Termination	Flying Leads
Motor Standards	NEMA
Motor Type	3740M
Mounting Arrangement	F2
Number of Poles	4
Overall Length	17.45 IN
Power Factor	80
Product Family	General Purpose
Pulley End Bearing Type	Ball
Pulley Face Code	Standard
Pulley Shaft Indicator	Standard
Rodent Screen	None
RoHS Status	ROHS COMPLIANT
Service Factor	1.15
Shaft Diameter	1.375 IN
Shaft Extension Location	Pulley End
Shaft Ground Indicator	No Shaft Grounding
Shaft Rotation	Reversible
Shaft Slinger Indicator	No Slinger
Speed	1770 rpm
Speed Code	Single Speed
Starting Method	Direct on line
Thermal Device - Bearing	None
Thermal Device - Winding	None

<b>Vibration Sensor Indicator</b>	<b>No Vibration Sensor</b>
<b>Winding Thermal 1</b>	<b>None</b>
<b>Winding Thermal 2</b>	<b>None</b>

**Nameplate**

<b>NP3553L</b>									
<b>CAT.NO.</b>	EFM3313T-8								
<b>SPEC</b>	37B106T937E7								
<b>HP</b>	10								
<b>VOLTS</b>	200								
<b>AMPS</b>	29.5								
<b>RPM</b>	1770								
<b>FRAME</b>	215T		<b>HZ</b>	60		<b>PH</b>	3		
<b>SF</b>	1.15	<b>CODE</b>	J	<b>DES</b>	A	<b>CLASS</b>	F		
<b>NEMA NOM. EFF</b>	91.7	<b>PF</b>	80						
<b>RATING</b>	40C AMB-CONT								
<b>CC</b>	010A								
<b>ENCL</b>	OPSB	<b>SER</b>							
<b>DE</b>	6307		<b>ODE</b>	6206					
<b>VPWM INVERTER READY</b>									
<b>CT30-60(2:1) VT3-60(20:1)</b>									

**Accessories**

<b>Part number</b>	<b>Description</b>	<b>Multiplier</b>
37-1404	C FACE KIT	A8

**AC Induction Motor Performance Data**

Record # 17618

Typical performance - not guaranteed values

Winding: 37WGT937-R001		Type: 3740M		Enclosure: OPSB	
<b>Nameplate Data</b>			<b>200 V, 60 Hz: Single Voltage Motor</b>		
Rated Output (HP)	10	Full Load Torque	29.7 LB-FT		
Volts	200	Start Configuration	direct on line		
Full Load Amps	29.5	Breakdown Torque	90.9 LB-FT		
R.P.M.	1770	Pull-up Torque	49.2 LB-FT		
Hz	60 Phase	3	Locked-rotor Torque	54.9 LB-FT	
NEMA Design Code	A	KVA Code	J	Starting Current	215 A
Service Factor (S.F.)	1.15		No-load Current	14 A	
NEMA Nom. Eff.	91.7	Power Factor	80	Line-line Res. @ 25°C	0.19 Ω
Rating - Duty	40C AMB-CONT		Temp. Rise @ Rated Load	34°C	
S.F. Amps			Temp. Rise @ S.F. Load	42°C	
			Locked-rotor Power Factor	38	
			Rotor inertia	0.984 lb-ft <sup>2</sup>	

**Load Characteristics 200 V, 60 Hz, 10 HP**

% of Rated Load	25	50	75	100	125	150	S.F.
Power Factor	40	62	74	80	83	84	82
Efficiency	87	91.6	92.2	91.8	90.8	89.6	91.2
Speed	1793	1786	1778	1770	1761	1751	1765
Line amperes	15.4	19.1	23.8	29.5	35.8	43	33.3

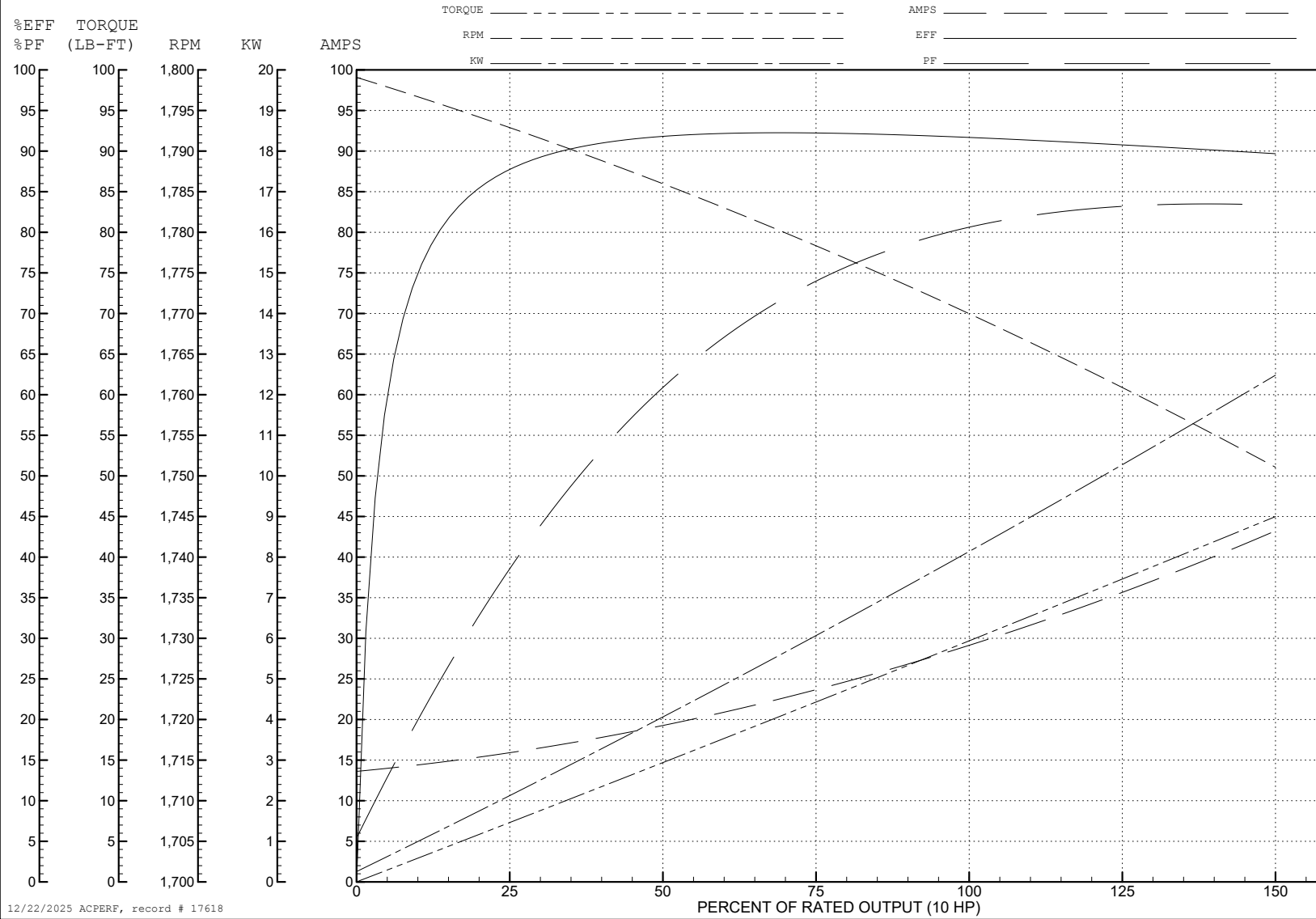
ABB Motors and Mechanical Inc.

WINDING # 37WGT937

Typical performance - not guaranteed values.

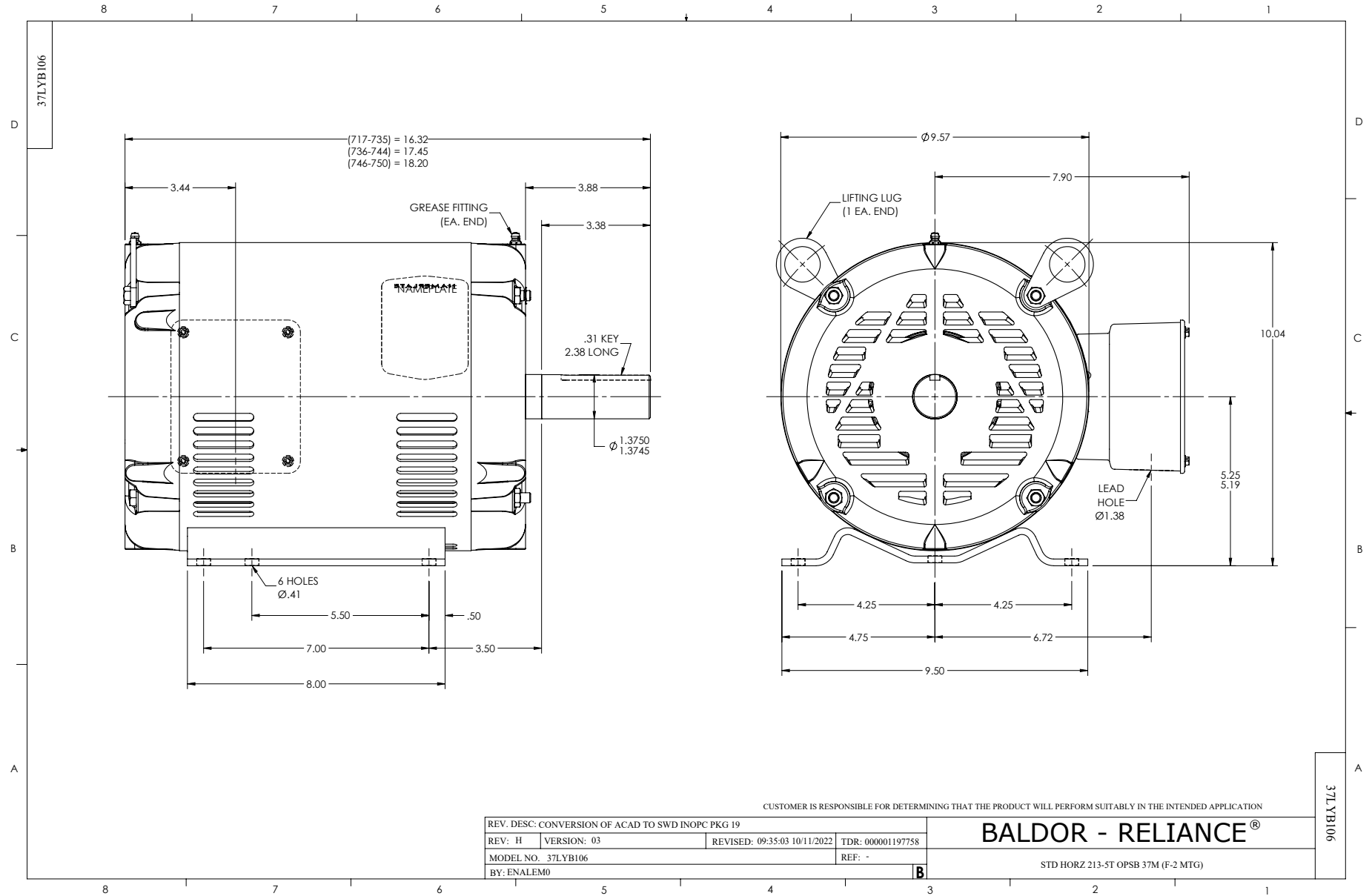
10 HP 3 PH 60 HZ 1770 RPM 200 V 3740M

TORQUES (LB-FT): PO=90.9 PU=49.2 LR=54.9 LRA=215



12/22/2025 ACPERF, record # 17618





CD0006



NOTES:

1. THREE LEAD MOTOR MAY BE EITHER WYE CONNECTED OR DELTA CONNECTED.
2. INTERCHANGE ANY TWO LINE LEADS TO REVERSE ROTATION.
3. OPTIONAL THERMOSTATS ARE PROVIDED WHEN SPECIFIED.
4. ACTUAL NUMBER OF INTERNAL PARALLEL CIRCUITS MAY VARY.
5. LEAD COLORS ARE OPTIONAL. LEADS MUST BE NUMBERED AS SHOWN.

CD0006

REV. DESC: ADD CLASS CONN00000007		
REV. LTR: E	VERSION: 01	TDR: 000001099922
FILE: \AAA\00005\141	REVISED: 10:24:49 02/19/2019	BY: ENBRIRO
MTL: -	© □	

**BALDOR - RELIANCE®**

3PH, SV, 3 LEADS, WYE OR DELTA CONNECTED

SH 1 of 1