



Customer information packet

ECS101M5H7EF4

7.5HP, 1800RPM, 3PH, 60HZ, 182T, 3648B, TEFC, F

Class - None

Division - Not Applicable

Specifications

Enclosure	TEFC
Frame	182T
Frame Material	Steel
Frequency	60.00 Hz
Haz Area Class and Group	None
Haz Area Division	Not Applicable
Motor Letter Type	Three Phase
Output @ Frequency	7.500 HP @ 60 HZ
Phase	3
Synchronous Speed @ Frequency	1800 RPM @ 60 HZ
Voltage @ Frequency	575.0 V @ 60 HZ
Agency Approvals	CULUS WEEE
Ambient Temperature	40 °C
Auxiliary Box	NO AUXILLARY BOX
Auxiliary Box Lead Termination	None
Base Indicator	Rigid
Bearing Grease Type	AEROSHELL #7 (-73°C TO +149°
Blower	None
Constant Torque Speed Range	6
Current @ Voltage	7.000 A @ 575.0 V
Design Code	B
Drip Cover	No Drip Cover
Duty Rating	CONT
Efficiency @ 100% Load	94.0 %
Electrically Isolated Bearing	Not Electrically Isolated
Feedback Device	NO FEEDBACK
Heater Indicator	No Heater
High Voltage Full Load Amps	7.0 a
Insulation Class	F
Inverter Code	Inverter Duty
Lifting Lugs	No Lifting Lugs

Part detail

Revision	H
Type	AC
Mech. spec.	
Base	
Status	PRD/A
Elec. spec.	36WGA0057
Layout	36LYT257
Eff. date	10-23-2025
CD Diagram	CD0006B03
Poles	04
Leads	3#14
Proprietary	False
Created date	07-06-2023

Locked Bearing Indicator	No Locked Bearing
Motor Lead Termination	Flying Leads
Motor Standards	NEMA
Motor Type	3648B
Mounting Arrangement	F1
Number of Poles	4
Overall Length	18.04 IN
Power Factor	94
Product Family	General Purpose
Pulley Face Code	Standard
Rodent Screen	None
Service Factor	1.50
Shaft Diameter	1.125 IN
Shaft Ground Indicator	No Shaft Grounding
Shaft Rotation	Reversible
Speed	1800 rpm
Speed Code	Single Speed
Starting Method	Full Voltage
Thermal Device - Bearing	None
Thermal Device - Winding	None
Vibration Sensor Indicator	No Vibration Sensor
Winding Thermal 1	None
Winding Thermal 2	None

BALDOR • RELIANCE

EC-Titanium™

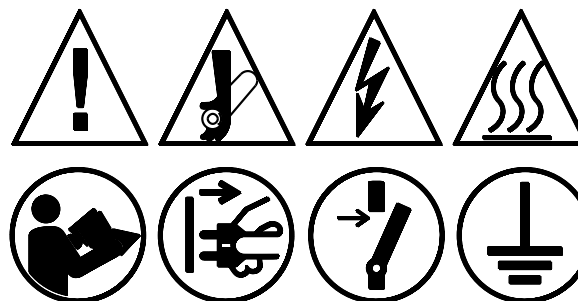
CAT. NO.	ECS101M5H7EF4										
SPEC.	36-0000-3659								YR	***	
FRAME	182T				ENCL.		TEFC		IP	54	
HP	7.5		RATING		40C AMB-CONT						
NOM. EFF.	94		PF		94		SF		1.5		
VOLTS	575				FLA		7				
RPM	1800			RPM MAX			4000				
HZ	60			PH.		3		CLASS		F	
BEMF (V)	268				Rs (Ω)		2.0				
Ld (mH)	39				Lq (mH)		146				
INV TYP	VPWM		CHP		60		TO 133		HZ		
	CT	6			TO 60 HZ		VT	1			TO 60 HZ
MATCHED INV	ACS580-01-09A0-6										
BEARING	DE	6206				ODE		6205			
SERIAL#	***										

ELECTRIC MOTOR FOR INDUSTRIAL USE



ABB MOTORS AND MECHANICAL INC.
5711 R.S. BOREHAM JR. ST., FORT SMITH, AR. MFG IN U.S.A.

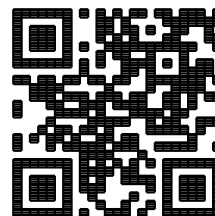
FERRITE ASSISTED
SYNCHRONOUS RELUCTANCE MOTOR
FOR INVERTER USE ONLY



PERMANENT MAGNET MOTOR. WHEN SHAFT IS
ROTATED, VOLTAGE WILL BE GENERATED AT
THE MOTOR TERMINALS.

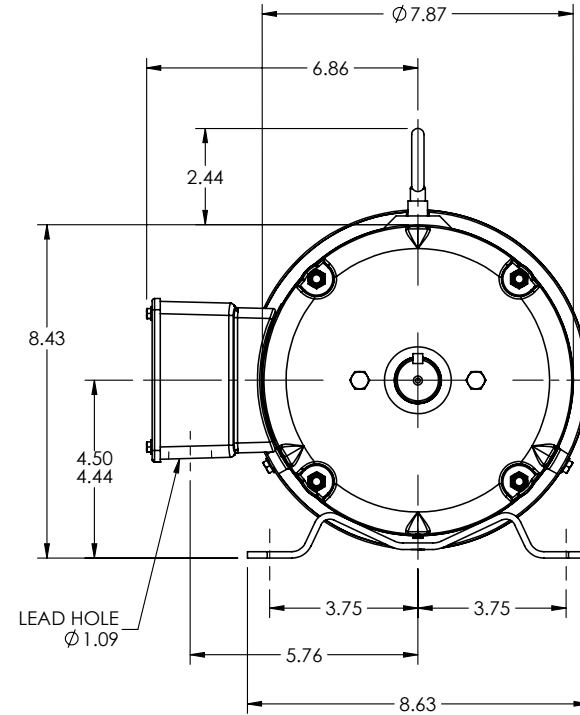
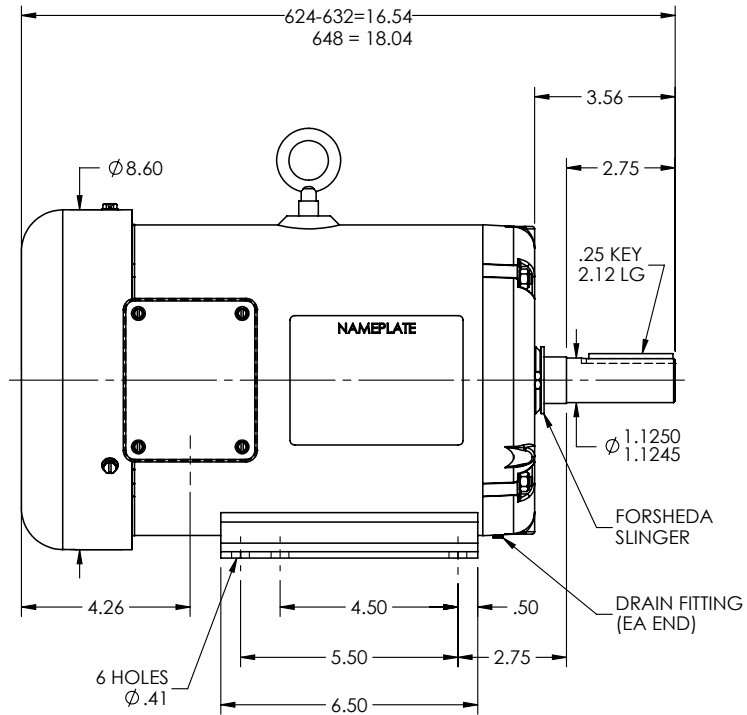
MOTEUR À AIMANT PERMANENT. LORSQUE
L'ARBRE TOURNE, UNE TENSION SERA
GÉNÉRÉE AUX BORNES DU MOTEUR.

BALDOR-RELIANCE
SHAFT GROUNDING BRUSH INSTALLED



UL **us**
LISTED
E46145

36LYT257



REV. DESC: CHANGE NAMEPLATE TO NP4246A01

REV: K

VERSION: 10

REVISED: 07:22:51 10/06/2022

TDR: 000001196734



MODEL NO. 36LYT257

REF: -

BY: ENALEM0

Material: -

BALDOR

HOR 182-4T TEFC B EYEBOLT INT SH GND ECS

36LYT257

