



---

# Customer information packet

## ECS101M0K2P2DD4

2.2KW, 1800RPM, 3PH, 50HZ, D90S, 3532B, TEFC, B

Class - None

Division - Not Applicable

## Specifications

Enclosure	TEFC
Frame	D90S
Frame Material	Steel
Frequency	50.00 Hz
Haz Area Class and Group	None
Haz Area Division	Not Applicable
Motor Letter Type	Brushless Wound Field PM Rotor
Output @ Frequency	2.200 KW @ 50 HZ
Phase	3
Synchronous Speed @ Frequency	1800 RPM @ 50 HZ
Voltage @ Frequency	380.0 V @ 50 HZ 190.0 V @ 50 HZ
Agency Approvals	CE CULUS UKCA WEEE
Ambient Temperature	40 °C
Auxiliary Box	NO AUXILLARY BOX
Auxiliary Box Lead Termination	None
Base Indicator	No Mounting
Bearing Grease Type	Polyrex EM (-20F +300F)
Blower	None
Constant Torque Speed Range	5
Current @ Voltage	7.100 A @ 190.0 V 3.550 A @ 380.0 V
Design Code	-
Drip Cover	No Drip Cover
Duty Rating	CONT
Efficiency @ 100% Load	91.8 %
Electrically Isolated Bearing	Not Electrically Isolated
Feedback Device	NO FEEDBACK
Frame Prefix	D

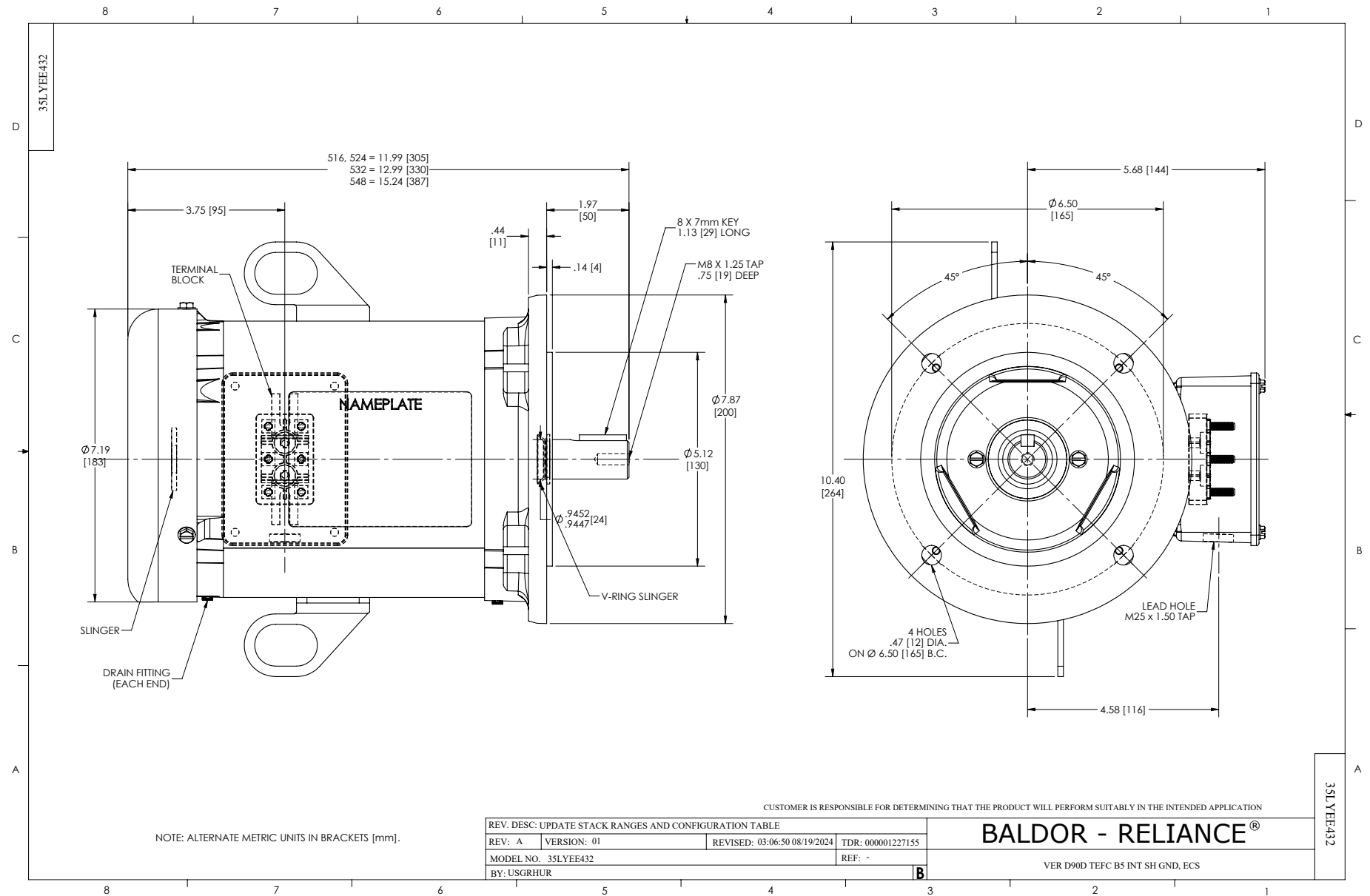
## Part detail

Revision	D
Type	AC
Mech. spec.	35EE432
Base	
Status	PRD/A
Elec. spec.	35WGG984
Layout	35LYEE432
Eff. date	11-22-2024
CD Diagram	CD0005A25
Poles	04
Leads	9#16 Y
Proprietary	False
Created date	03-19-2024

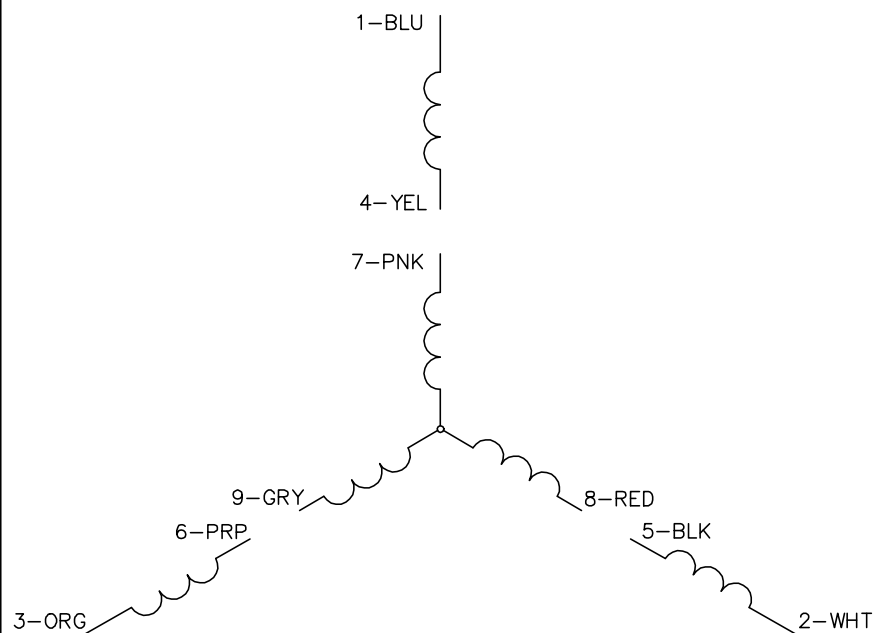
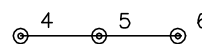
Heater Indicator	No Heater
High Voltage Full Load Amps	3.6 a
Insulation Class	F
Inverter Code	Inverter Duty
KVA Code	-
Lifting Lugs	No Lifting Lugs
Locked Bearing Indicator	Locked Bearing
Motor Lead Quantity/Wire Size	9 @ 116 AWG
Motor Lead Termination	Terminal Block
Motor Standards	IEC
Motor Type	3532B
Mounting Arrangement	B3
Number of Poles	4
Overall Length	13.83 IN
Power Factor	99
Product Family	General Purpose
Pulley Face Code	Standard
Rodent Screen	None
RoHS Status	Y
Service Factor	1.15
Shaft Diameter	0.945 IN
Shaft Ground Indicator	Shaft Grounding
Shaft Rotation	Reversible
Speed	1800 rpm
Speed Code	Single Speed
Starting Method	Direct on line
Thermal Device - Bearing	None
Thermal Device - Winding	None
Vibration Sensor Indicator	No Vibration Sensor
Winding Thermal 1	None
Winding Thermal 2	None

## Nameplate

NP3968B01A01												
CAT.NO.	ECS101M0K2P2DD4											
SPEC.	35EE432G984					YR						
FRAME	D90S			IP	55	WT.	55					
KW	2.2	HZ	50	PH	3	DUTY-IPM	CONT					
INS CL	F	CLASS RISE					AMB-C	40				
EFF. CL	IE5	EFF	91.8			COSO	99					
VOLTS	190/380			FLA	7.1/3.55							
1/MIN	1500			1/MIN MAX				3000				
BEMF (V)	222			RS (OHMS)				6.72/1.68				
LD (MH)	13/52				LQ (MH)				45.8/183			
VPWM	CP =	50			TO	100						
CT	5	TO	50	VT	5	TO	50					
MATCHED INV	ACS380-04xx-12A7-1 / 06A3-4											
DE	6205			ODE	6203							
SERIAL #												



CD0005A25

LOW VOLTAGE  
(2Y)

U V W

INVERTER

HIGH VOLTAGE  
(1Y)

U V W

INVERTER

## NOTES:

1. INTERCHANGE ANY TWO LINE LEADS TO REVERSE ROTATION.
2. ACTUAL NUMBER OF INTERNAL PARALLEL CIRCUITS MAY BE A MULTIPLE OF THOSE SHOWN ABOVE.
3. LEAD COLORS ARE OPTIONAL. LEADS MUST ALWAYS BE NUMBERED AS SHOWN.

REV. DESC: NEW

REV. LTR: -

VERSION: 00

TDR: 000001135746

FILE: \AAA\00253\082

REVISED: 01:10:57 03/30/2020

BY: ENMARSO

MTL: -



BALDOR - RELIANCE®

3PH, DV, 9 LEADS, ECS

SH 1 of 1

CD0005A25