

BALDOR • RELIANCE

Customer information packet

CHM344A

.5HP, 1725RPM, 3PH, 60HZ, 48YZ, 3416M, TEAO, F1

Class - None

Division - Not Applicable

Specifications

Enclosure	TEAO
Frame	48YZ
Frame Material	Steel
Frequency	60.00 Hz
Haz Area Class and Group	None
Haz Area Division	Not Applicable
Motor Letter Type	Three Phase
Output @ Frequency	.500 HP @ 60 HZ
Phase	3
Synchronous Speed @ Frequency	1800 RPM @ 60 HZ
Voltage @ Frequency	230.0 V @ 60 HZ 460.0 V @ 60 HZ
Agency Approvals	UR CSA
Ambient Temperature	40 °C
Auxiliary Box	NO AUXILLARY BOX
Auxiliary Box Lead Termination	None
Base Indicator	Resilient
Bearing Grease Type	Polyrex EM (-20F +300F)
Blower	None
Current @ Voltage	1.100 A @ 460.0 V 2.200 A @ 230.0 V 2.300 A @ 208.0 V
Design Code	B
Drip Cover	No Drip Cover
Duty Rating	CONT
Efficiency @ 100% Load	66.0 %
Electrically Isolated Bearing	Not Electrically Isolated
Feedback Device	NO FEEDBACK
Front Face Code	Resilient Mount
Front Shaft Indicator	None
Heater Indicator	No Heater

Part detail

Revision	N
Type	AC
Mech. spec.	34M250
Base	
Status	PRD/A
Elec. spec.	34WGR073
Layout	34LYM250
Eff. date	10-28-2024
CD Diagram	CD0007
Poles	04
Leads	12#18
Proprietary	False
Created date	06-17-2013

High Voltage Full Load Amps	1.1 a
Insulation Class	B
Inverter Code	Not Inverter
KVA Code	M
Lifting Lugs	No Lifting Lugs
Locked Bearing Indicator	No Locked Bearing
Motor Lead Exit	Terminal Panel Or Lead Hole
Motor Lead Quantity/Wire Size	12 @ 18 AWG
Motor Lead Termination	Flying Leads
Motor Standards	NEMA
Motor Type	3416M
Mounting Arrangement	F1
Number of Poles	4
Overall Length	11.34 IN
Power Factor	63
Product Family	General Purpose
Pulley End Bearing Type	Ball
Pulley Face Code	Resilient Mount
Pulley Shaft Indicator	Standard
Rodent Screen	None
RoHS Status	ROHS COMPLIANT
Service Factor	1.25
Shaft Diameter	0.500 IN
Shaft Extension Location	Pulley End
Shaft Ground Indicator	No Shaft Grounding
Shaft Rotation	Reversible
Shaft Slinger Indicator	No Slinger
Speed	1725 rpm
Speed Code	Single Speed
Starting Method	Direct on line
Thermal Device - Bearing	None
Thermal Device - Winding	None
Vibration Sensor Indicator	No Vibration Sensor
Winding Thermal 1	Automatic Thermal Overload

Winding Thermal 1 Location

SB

Nameplate

NP1257L									
CAT.NO.	CHM344A								
SPEC.	34M250R073G1								
HP	.5								
VOLTS	230/460								
AMP	2.2/1.1								
RPM	1725								
FRAME	48YZ		HZ	60		PH	3		
SER.F.	1.25	CODE	M	DES	B	CL	B		
NEMA-NOM-EFF	66	PF	63						
RATING	40C AMB-CONT								
CC									
DE	6203	ODE	6203						
ENCL	TEAO	SN							
	SFA 2.4/1.2								

AC Induction Motor Performance Data

Record # 42463

Typical performance - not guaranteed values

Winding: 34WGR073-R001		Type: 3416M		Enclosure: TEAO			
Nameplate Data			460 V, 60 Hz: High Voltage Connection				
Rated Output (HP)	.5 AIR OVER	Full Load Torque	1.53 LB-FT				
Volts	230/460	Start Configuration	direct on line				
Full Load Amps	2.2/1.1	Breakdown Torque	6.36 LB-FT				
R.P.M.	1725	Pull-up Torque	4.73 LB-FT				
Hz	60 Phase	3	Locked-rotor Torque	5.62 LB-FT			
NEMA Design Code	B	KVA Code	M	Starting Current	6.84 A		
Service Factor (S.F.)	1.25		No-load Current	0.883 A			
NEMA Nom. Eff.	66	Power Factor	63	Line-line Res. @ 25°C	34.071 Ω		
Rating - Duty	40C AMB-CONT		Temp. Rise @ Rated Load				
S.F. Amps	2.4/1.2		Temp. Rise @ S.F. Load				
			Locked-rotor Power Factor	66			
			Rotor inertia	0.0381 LB-FT ²			

Load Characteristics 460 V, 60 Hz, 0.5 HP

% of Rated Load	25	50	75	100	125	150	S.F.
Power Factor	32	45	54	63	69	74	69
Efficiency	41.7	55.9	63.3	67	69.3	69.8	69.3
Speed	1781.1	1767.1	1754.9	1739.5	1725.4	1709	1725
Line amperes	0.899	0.954	1.03	1.12	1.22	1.34	1.22

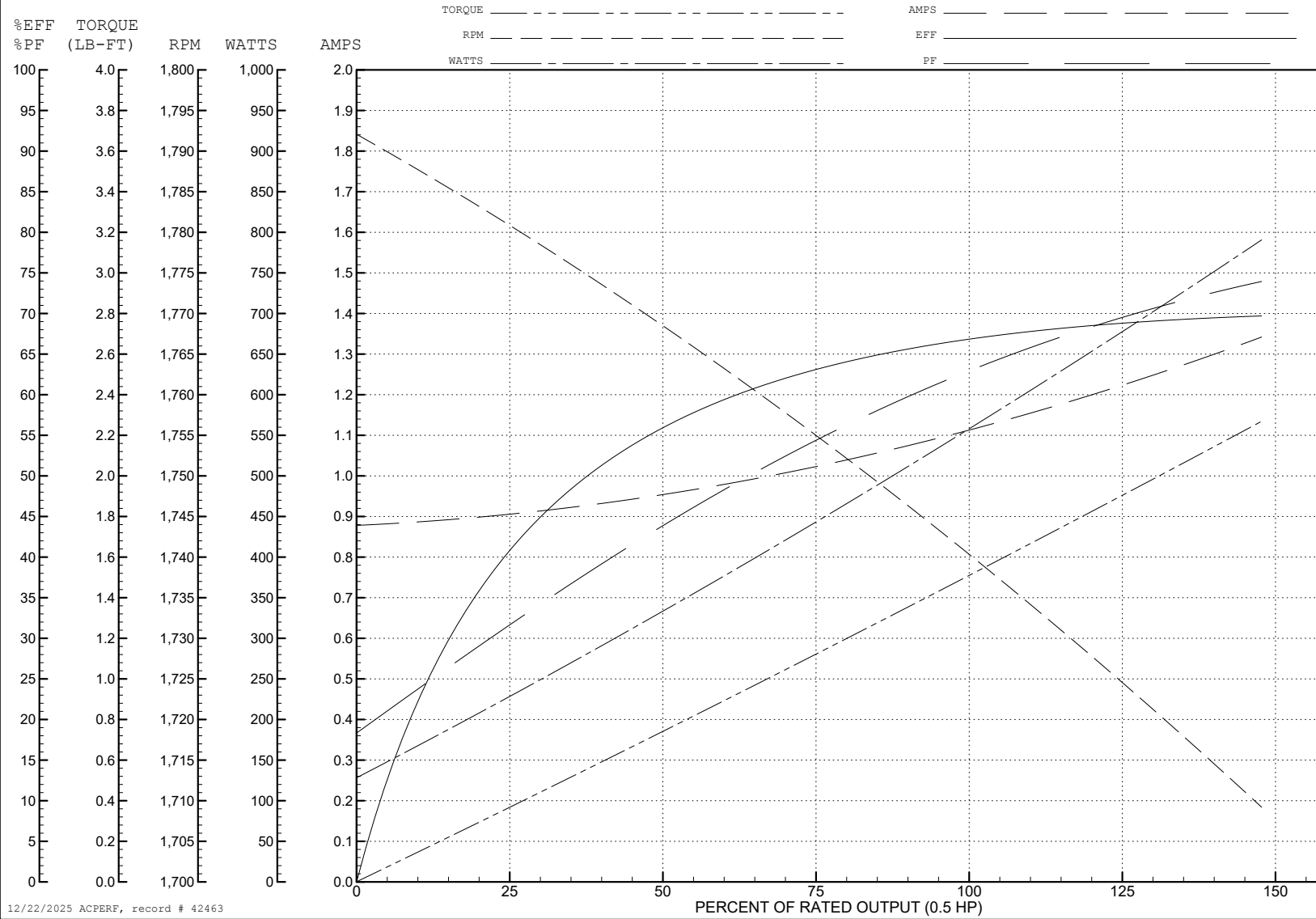
ABB Motors and Mechanical Inc.

WINDING # 34WGR073

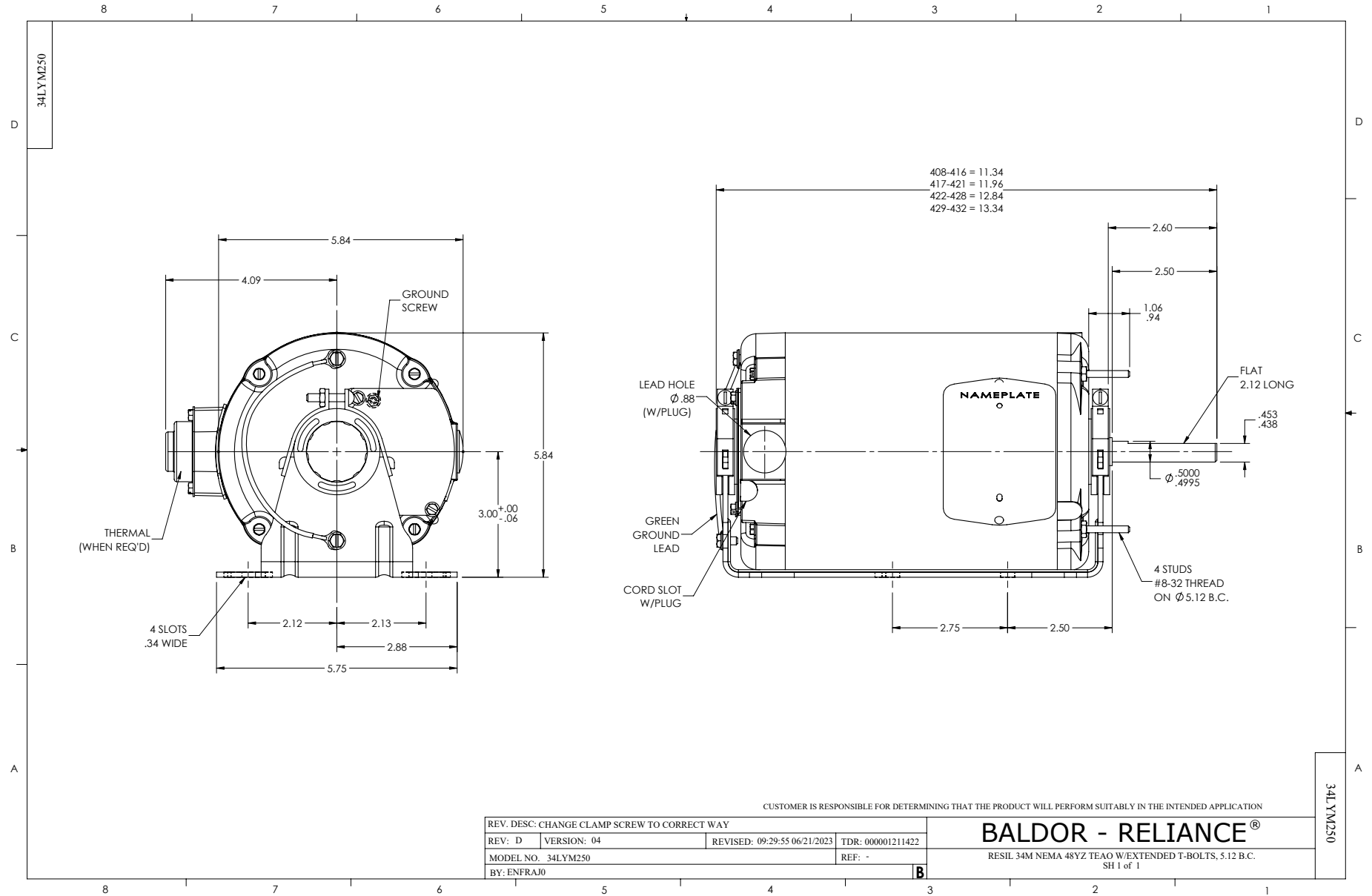
Typical performance - not guaranteed values.

0.5 HP 3 PH 60 HZ 1725 RPM 460 V 3416M

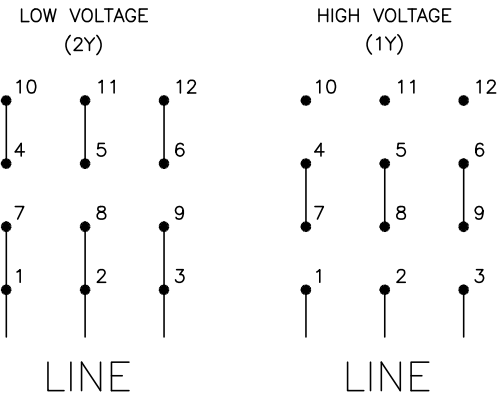
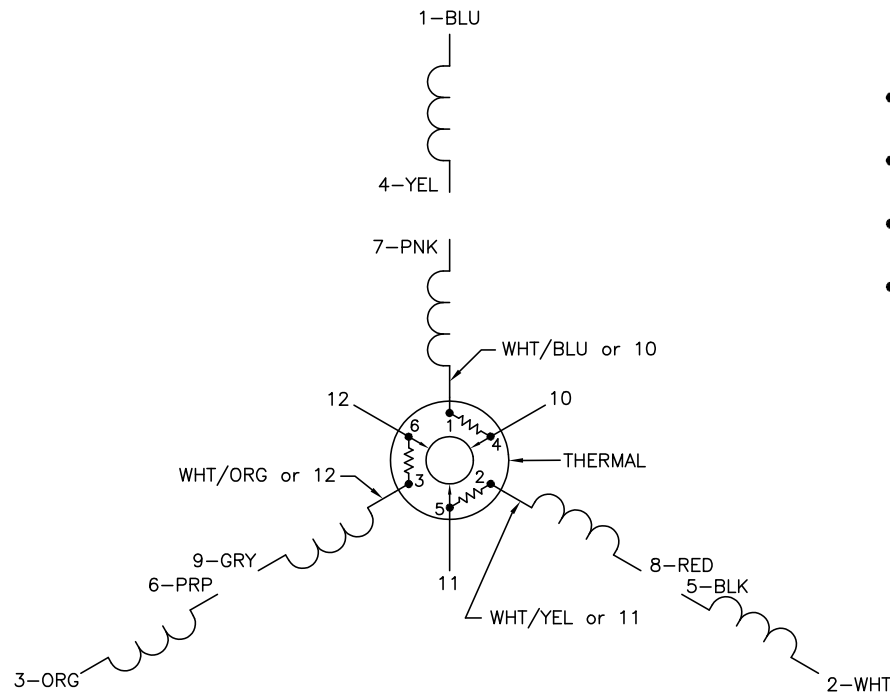
TORQUES (LB-FT): PO=6.36 PU=4.73 LR=5.62 LRA=6.84



12/22/2025 ACPERF, record # 42463



CD0007



- NOTES:
1. INTERCHANGE ANY TWO LINE LEADS TO REVERSE ROTATION.
 2. ACTUAL NUMBER OF INTERNAL PARALLEL CIRCUITS MAY VARY.
 3. LEAD COLORS ARE OPTIONAL. LEADS MUST ALWAYS BE NUMBERED AS SHOWN.

CD0007

REV. DESC: ADDED "CK" PLANT CODE			
REV. LTR: E	BY: EAH	REVISED: 05/06/99 17:1	TDR: 0181040
L00000		FILE: AAA00008370	MDL: -
		MTL: -	

BALDOR ELECTRIC Co.

3PH, DV, THERMAL, 12 LEADS