

BALDOR • RELIANCE

Customer information packet

CHC365A

.5HP, 1100RPM, 1PH, 60HZ, 56YZ, 3428C, TEAO, F1

Class - None

Division - Not Applicable

Specifications

Enclosure	TEAO
Frame	56YZ
Frame Material	Steel
Frequency	60.00 Hz
Haz Area Class and Group	None
Haz Area Division	Not Applicable
Motor Letter Type	Oil Capacitor Start and Run
Output @ Frequency	.500 HP @ 60 HZ
Phase	1
Synchronous Speed @ Frequency	1200 RPM @ 60 HZ
Voltage @ Frequency	115.0 V @ 60 HZ 230.0 V @ 60 HZ
Agency Approvals	UR CSA
Ambient Temperature	40 °C
Auxiliary Box	NO AUXILLARY BOX
Auxiliary Box Lead Termination	None
Base Indicator	Resilient
Bearing Grease Type	Polyrex EM (-20F +300F)
Blower	None
Current @ Voltage	3.200 A @ 230.0 V 3.300 A @ 208.0 V 6.400 A @ 115.0 V
Drip Cover	No Drip Cover
Duty Rating	CONT
Electrically Isolated Bearing	Not Electrically Isolated
Feedback Device	NO FEEDBACK
Front Face Code	Resilient Mount
Front Shaft Indicator	None
Heater Indicator	No Heater
High Voltage Full Load Amps	3.2 a
Insulation Class	B

Part detail

Revision	L
Type	AC
Mech. spec.	34M244
Base	
Status	PRD/A
Elec. spec.	34WGR229
Layout	34LYM244
Eff. date	10-28-2024
CD Diagram	CD0804
Poles	06
Leads	7#18
Proprietary	False
Created date	10-16-2014

Inverter Code	Not Inverter
KVA Code	E
Lifting Lugs	No Lifting Lugs
Locked Bearing Indicator	No Locked Bearing
Motor Lead Exit	Terminal Panel Or Lead Hole
Motor Lead Quantity/Wire Size	7 @ 18 AWG
Motor Lead Termination	None
Motor Standards	NEMA
Motor Type	3428C
Mounting Arrangement	F1
Number of Poles	6
Overall Length	13.58 IN
Product Family	General Purpose
Pulley End Bearing Type	Ball
Pulley Face Code	Resilient Mount
Pulley Shaft Indicator	Standard
Rodent Screen	None
RoHS Status	ROHS COMPLIANT
Service Factor	1.15
Shaft Diameter	0.625 IN
Shaft Extension Location	Pulley End
Shaft Ground Indicator	No Shaft Grounding
Shaft Rotation	Reversible: Connected Standard
Shaft Slinger Indicator	No Slinger
Speed	1100 rpm
Speed Code	Single Speed
Starting Method	Direct on line
Thermal Device - Bearing	None
Thermal Device - Winding	None
Vibration Sensor Indicator	No Vibration Sensor
Winding Thermal 1	Automatic Thermal Overload
Winding Thermal 1 Location	WG

Nameplate

NP1257L									
CAT.NO.	CHC365A								
SPEC.	34M244R229G1								
HP	.5								
VOLTS	115/230								
AMP	6.4/3.2								
RPM	1100								
FRAME	56YZ			HZ	60		PH	1	
SER.F.	1.15	CODE	E	DES	-	CL	B		
NEMA-NOM-EFF		PF							
RATING	40C AMB-CONT								
CC									
DE	6203	ODE	6203						
ENCL	TEAO	SN							

AC Induction Motor Performance Data

Record # 51612

Typical performance - not guaranteed values

Winding: 34WGR229-R001		Type: 3428C	Enclosure: TEAO	
Nameplate Data			230 V, 60 Hz: High Voltage Connection	
Rated Output (HP)	.5	Full Load Torque	2.4 LB-FT	
Volts	115/230	Start Configuration	direct on line	
Full Load Amps	6.4/3.2	Breakdown Torque	4.67 LB-FT	
R.P.M.	1100	Pull-up Torque	1.01 LB-FT	
Hz	60 Phase	1	Locked-rotor Torque	1.39 LB-FT
NEMA Design Code	- KVA Code	E	Starting Current	10.4 A
Service Factor (S.F.)	1.15	No-load Current	2.17 A	
NEMA Nom. Eff.	0 Power Factor	0	Line-line Res. @ 25°C	5.88 Ω A Ph 7.6663 Ω B Ph
Rating - Duty	40C AMB-CONT	Temp. Rise @ Rated Load		

Load Characteristics 230 V, 60 Hz, 0.5 HP

% of Rated Load	25	50	75	100	125	150	S.F.
Power Factor	51	63	71	78	83	86	81
Efficiency	38.5	56.7	64.4	67.4	67.3	64.6	67.3
Speed	1180.2	1163.5	1144.9	1122.7	1096.1	1059.1	1107
Line amperes	2.21	2.41	2.74	3.14	3.62	4.25	3.43

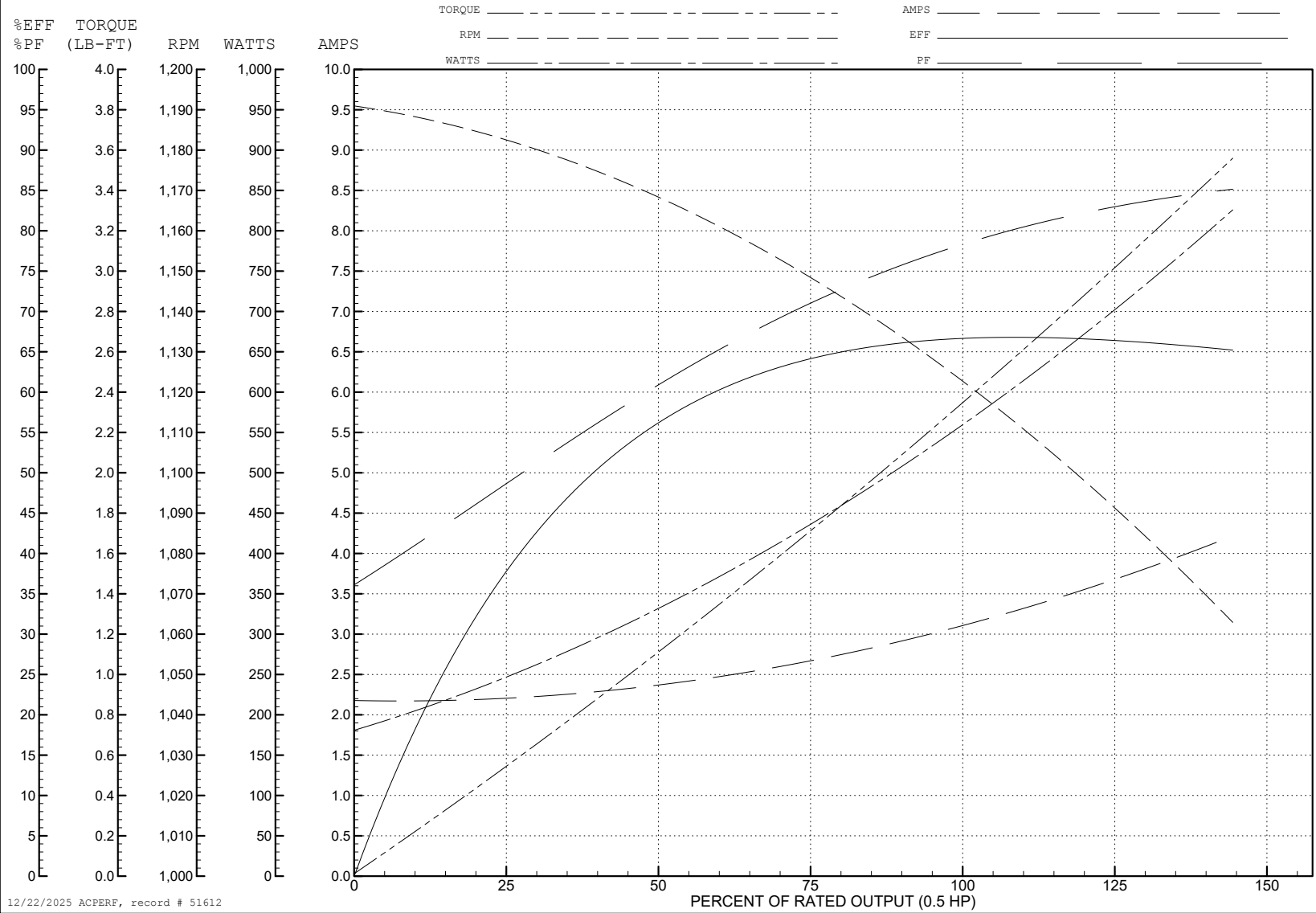
ABB Motors and Mechanical Inc.

WINDING # 34WGR229

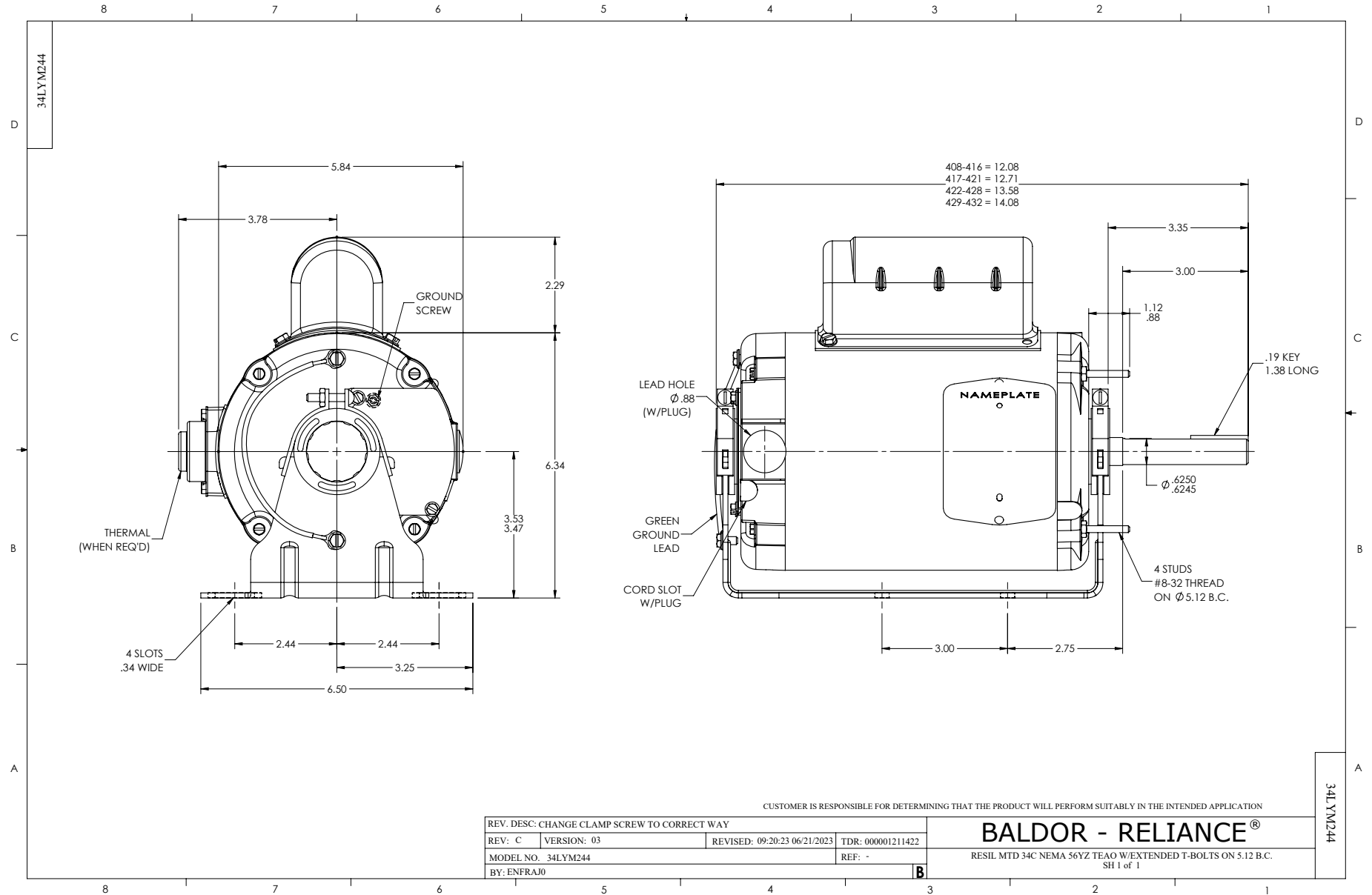
Typical performance - not guaranteed values.

0.5 HP 1 PH 60 HZ 1100 RPM 230 V 3428C

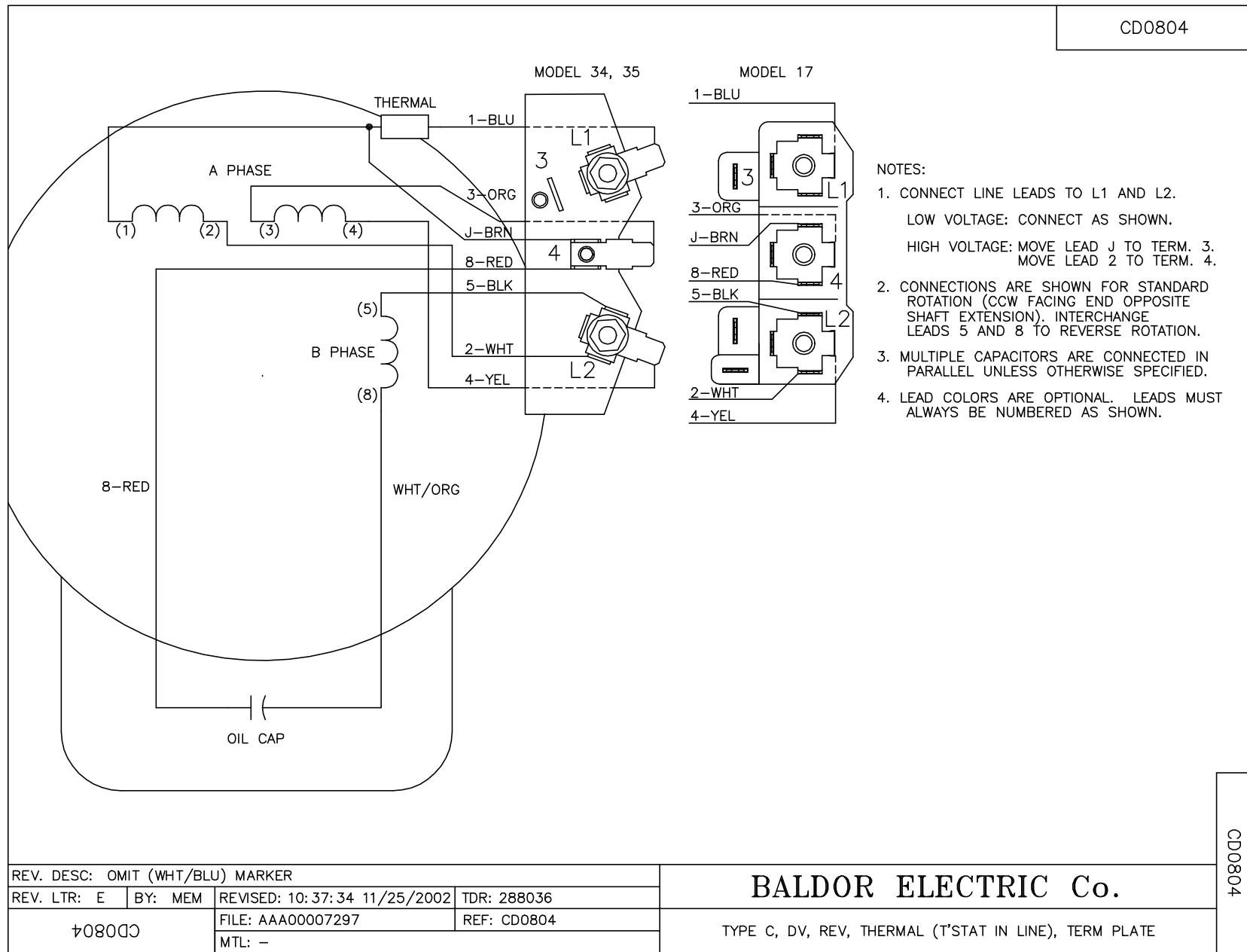
TORQUES (LB-FT): PO=4.67 PU=1.01 LR=1.39 LRA=10.4



12/22/2025 ACPERF, record # 51612



CD0804



CD0804

BALDOR ELECTRIC Co.

TYPE C, DV, REV, THERMAL (T^{STAT} IN LINE), TERM PLATE