

BALDOR • RELIANCE

Customer information packet

CHC144A

.25HP, 1725RPM, 1PH, 60HZ, 48Z, 3411C, TEAO, F1

Class - None

Division - Not Applicable

Specifications

Enclosure	TEAO
Frame	48Z
Frame Material	Steel
Frequency	60.00 Hz
Haz Area Class and Group	None
Haz Area Division	Not Applicable
Motor Letter Type	Oil Capacitor Start and Run
Output @ Frequency	.250 HP @ 60 HZ
Phase	1
Synchronous Speed @ Frequency	1800 RPM @ 60 HZ
Voltage @ Frequency	115.0 V @ 60 HZ 230.0 V @ 60 HZ
Agency Approvals	UR CSA
Ambient Temperature	40 °C
Auxiliary Box	NO AUXILLARY BOX
Auxiliary Box Lead Termination	None
Base Indicator	Resilient
Bearing Grease Type	Polyrex EM (-20F +300F)
Blower	None
Current @ Voltage	1.400 A @ 230.0 V 1.500 A @ 208.0 V 2.800 A @ 115.0 V
Drip Cover	No Drip Cover
Duty Rating	CONT
Efficiency @ 100% Load	70.0 %
Electrically Isolated Bearing	Not Electrically Isolated
Feedback Device	NO FEEDBACK
Front Face Code	Resilient Mount
Front Shaft Indicator	None
Heater Indicator	No Heater
High Voltage Full Load Amps	1.4 a

Part detail

Revision	N
Type	AC
Mech. spec.	34M212
Base	
Status	PRD/A
Elec. spec.	34WGS986
Layout	34LYM212
Eff. date	10-28-2024
CD Diagram	CD0804
Poles	04
Leads	7#18
Proprietary	False
Created date	04-09-2013

Insulation Class	B
Inverter Code	Not Inverter
KVA Code	F
Lifting Lugs	No Lifting Lugs
Locked Bearing Indicator	No Locked Bearing
Motor Lead Exit	Terminal Panel Or Lead Hole
Motor Lead Quantity/Wire Size	7 @ 18 AWG
Motor Lead Termination	None
Motor Standards	NEMA
Motor Type	3411C
Mounting Arrangement	F1
Number of Poles	4
Overall Length	11.35 IN
Power Factor	81
Product Family	General Purpose
Pulley End Bearing Type	Ball
Pulley Face Code	Resilient Mount
Pulley Shaft Indicator	Standard
Rodent Screen	None
RoHS Status	ROHS COMPLIANT
Service Factor	1.00
Shaft Diameter	0.500 IN
Shaft Extension Location	Pulley End
Shaft Ground Indicator	No Shaft Grounding
Shaft Rotation	Reversible: Connected Standard
Shaft Slinger Indicator	No Slinger
Speed	1725 rpm
Speed Code	Single Speed
Starting Method	Direct on line
Thermal Device - Bearing	None
Thermal Device - Winding	None
Vibration Sensor Indicator	No Vibration Sensor
Winding Thermal 1	Automatic Thermal Overload
Winding Thermal 1 Location	WG

Nameplate

NP1257L									
CAT.NO.	CHC144A								
SPEC.	34M212S986G1								
HP	.25								
VOLTS	115/230								
AMP	2.8/1.4								
RPM	1725								
FRAME	48Z			HZ	60		PH	1	
SER.F.	1.00	CODE	F	DES	-	CL	B		
NEMA-NOM-EFF	70	PF	81						
RATING	40C AMB-CONT								
CC									
DE	6203	ODE	6203						
ENCL	TEAO	SN							

AC Induction Motor Performance Data

Record # 41866

Typical performance - not guaranteed values

Winding: 34WGS986-R003			Type: 3411C			Enclosure: TEAO		
Nameplate Data						115 V, 60 Hz: Low Voltage Connection		
Rated Output (HP)			.25	Full Load Torque	0.766 LB-FT			
Volts			115/230	Start Configuration	direct on line			
Full Load Amps			2.8/1.4	Breakdown Torque	1.89 LB-FT			
R.P.M.			1700	Pull-up Torque	0.3 LB-FT			
Hz	60	Phase	1	Locked-rotor Torque	0.35 LB-FT			
NEMA Design Code	N	KVA Code	F	Starting Current	12.2 A			
Service Factor (S.F.)			1.15	No-load Current	2.05 A			
NEMA Nom. Eff.	70	Power Factor	81	Line-line Res. @ 25°C	3.14 Ω A Ph 32.5 Ω B Ph			
Rating - Duty			40C AMB-CONT	Temp. Rise @ Rated Load				

Load Characteristics 115 V, 60 Hz, 0.25 HP

% of Rated Load	25	50	75	100	125	150	S.F.
Power Factor	56	65	74	81	86	87	84
Efficiency	35	54.3	64.7	70.9	70.3	70.6	70.5
Speed	1781	1766	1751	1733	1710	1681	1719
Line amperes	2.17	2.36	2.58	2.87	3.35	3.87	3.16

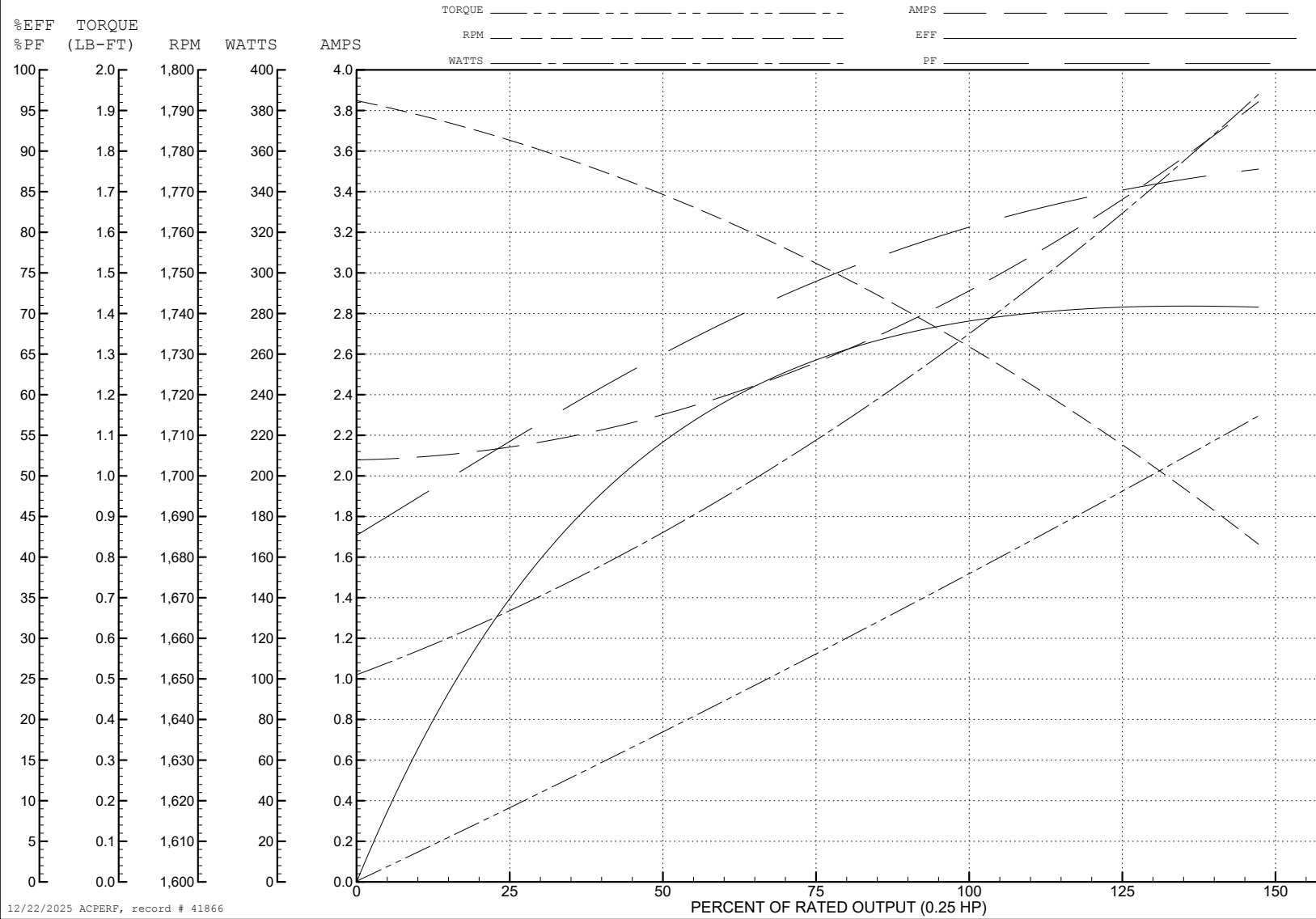
ABB Motors and Mechanical Inc.

WINDING # 34WGS986

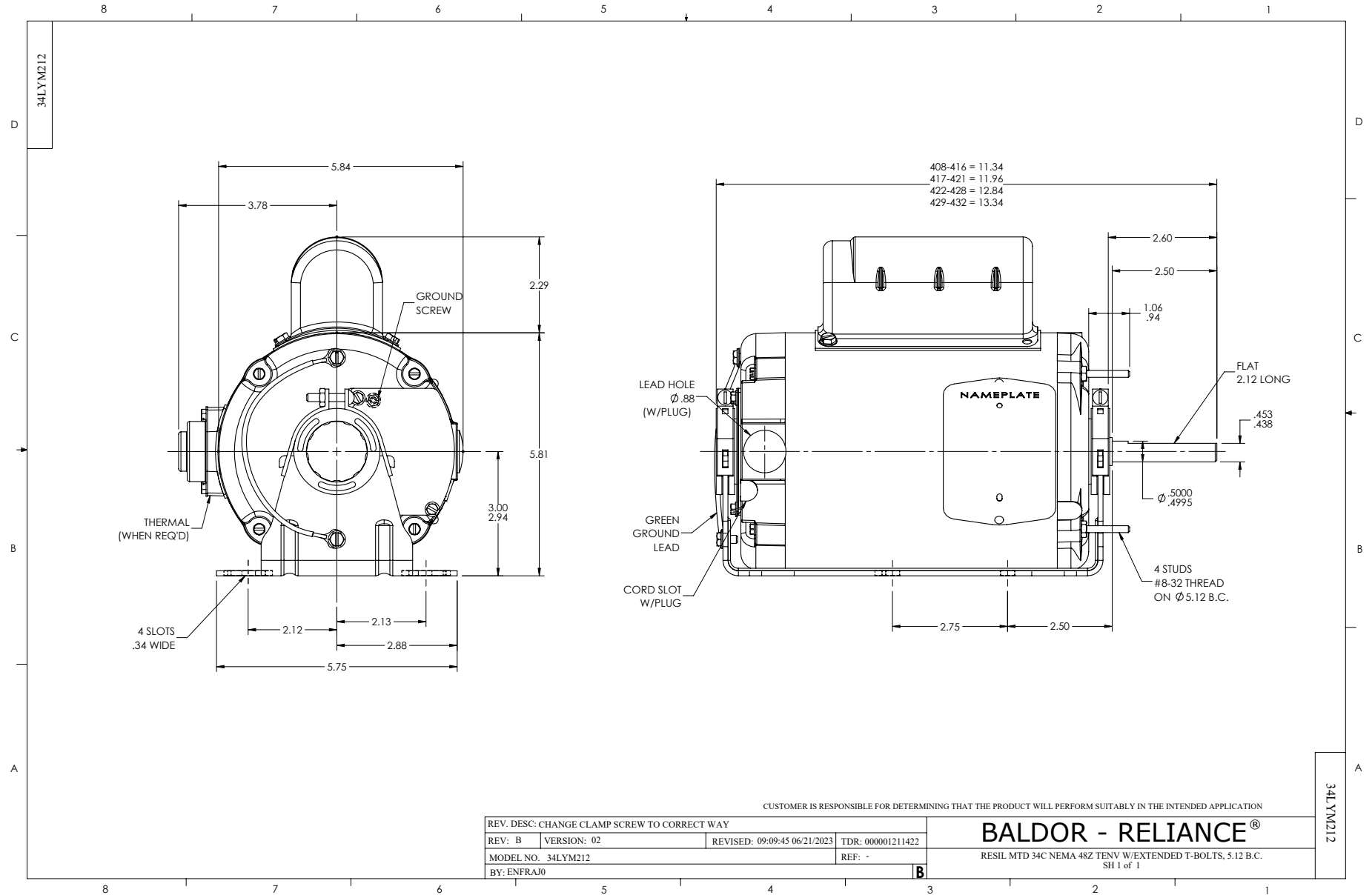
0.25 HP 1 PH 60 HZ 1700 RPM 115 V 3411C

Typical performance - not guaranteed values.

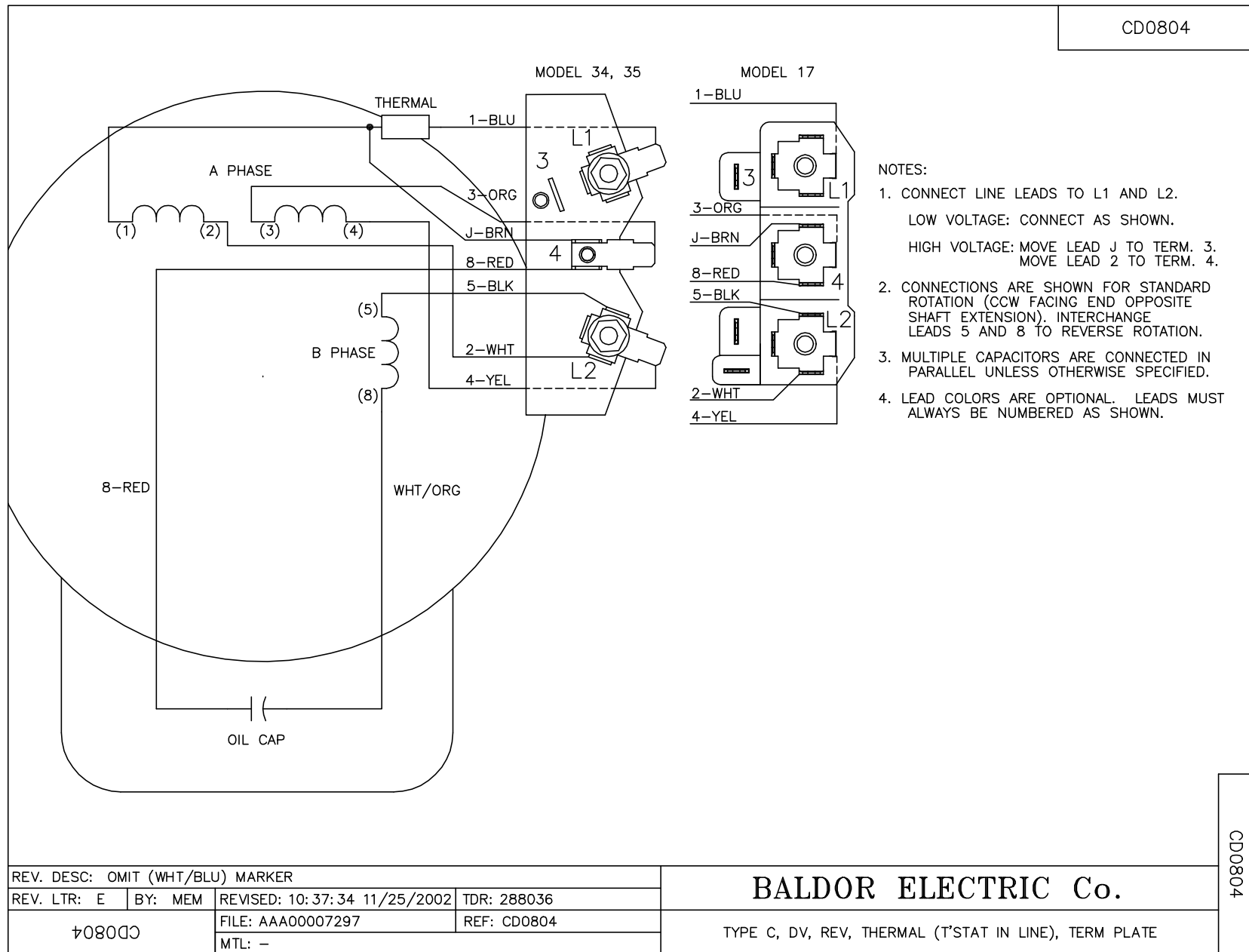
TORQUES (LB-FT): PO=1.89 PU=0.3 LR=0.35 LRA=12.2



12/22/2025 ACPERF, record # 41866



CD0804



REV. DESC: OMIT (WHT/BLU) MARKER			
REV. LTR: E	BY: MEM	REVISED: 10: 37: 34 11/25/2002	TDR: 288036
FILE: AAA00007297		REF: CD0804	
MTL: -			

BALDOR ELECTRIC Co.

TYPE C, DV, REV, THERMAL (T^{STAT} IN LINE), TERM PLATE

CD0804