

**BALDOR • RELIANCE**

---

# Customer information packet

## CFSWDM3559-E-G

3/2.2KW 4:1CT, 10:1VTHP, 3470 1/MIN IP69K

Class - None

Division - Not Applicable

Copyright © All product information within this document is subject to ABB Motors and Mechanical Inc. copyright © protection, unless otherwise noted.

12/22/2025 10:58:31 PM

## Specifications

Enclosure	TEFC
Frame	56C
Frame Material	Stainless Steel
Frequency	60.00 Hz
Haz Area Class and Group	None
Haz Area Division	Not Applicable
Motor Letter Type	Three Phase
Output @ Frequency	3.000 HP @ 60 HZ
Phase	3
Synchronous Speed @ Frequency	3600 RPM @ 60 HZ
Voltage @ Frequency	230.0 V @ 60 HZ 460.0 V @ 60 HZ
Agency Approvals	CE CSA EEV NEMA PREMIUM NEMA_PREMIUM WEEE UR
Ambient Temperature	40 °C
Auxiliary Box	NO AUXILLARY BOX
Auxiliary Box Lead Termination	None
Base Indicator	Rigid
Bearing Grease Type	Polyrex EM (-20F +300F)
Blower	None
Current @ Voltage	7.700 A @ 208.0 V 7.200 A @ 230.0 V 3.600 A @ 460.0 V
Design Code	A
Drip Cover	No Drip Cover
Duty Rating	CONT
Efficiency @ 100% Load	86.5 %
Electrically Isolated Bearing	Not Electrically Isolated

## Part detail

Revision	F
Type	AC
Mech. spec.	
Base	
Status	PRD/A
Elec. spec.	35WGR930
Layout	35LY-000-653
Eff. date	05-12-2023
CD Diagram	CD0005
Poles	02
Leads	9#18
Proprietary	False
Created date	10-05-2021

Feedback Device	NO FEEDBACK
Heater Indicator	No Heater
High Voltage Full Load Amps	3.6 a
Insulation Class	H
Inverter Code	Inverter Duty
KVA Code	P
Lifting Lugs	No Lifting Lugs
Locked Bearing Indicator	Locked Bearing
Motor Finish	UNPAINTED
Motor Lead Termination	Flying Leads
Motor Standards	NEMA
Motor Type	3546M
Mounting Arrangement	F1
Number of Poles	2
Overall Length	16.21 IN
Power Factor	90
Product Family	WD All SS Encapsulated
Pulley Face Code	C-Face
Rodent Screen	None
Service Factor	1.15
Shaft Diameter	0.625 IN
Shaft Ground Indicator	Shaft Grounding
Shaft Rotation	Reversible
Speed	3470 rpm
Speed Code	Single Speed
Starting Method	Direct on line
Thermal Device - Bearing	None
Thermal Device - Winding	None
Vibration Sensor Indicator	No Vibration Sensor
Winding Thermal 1	None
Winding Thermal 2	None

**Nameplate**

<b>NP4294A01</b>										
<b>CAT.NO.</b>	CFSWDM3559-E-G									
<b>SPEC.</b>	35-0000-1317									
<b>HP</b>	3/2.2KW 4:1CT,10:1VT						<b>IP</b>	69		
<b>VOLTS</b>	230/460									
<b>AMPS</b>	7.2/3.6									
<b>R.P.M.</b>	3470 1/MIN IC411 29KG									
<b>FRAME</b>	56C		<b>HZ</b>	60		<b>PH</b>	3			
<b>SER.F.</b>	1.15	<b>CODE</b>	P	<b>DES.</b>	A	<b>CLASS</b>	H			
<b>NEMA NOM. EFF.</b>	86.5	<b>P.F.</b>	90							
<b>RATING</b>	40C AMB-S1 CONT				<b>WT.</b>					
<b>CC</b>	010A	<b>USABLE AT 208V</b>				N/A				
<b>DE</b>	6205	<b>ODE</b>	6205							
<b>ENCL</b>	TEFC	<b>SN</b>								
IE3-87.2(75%)86.3(50%)										

**AC Induction Motor Performance Data**

Record # 55293

Typical performance - not guaranteed values

<b>Winding: 35WGR930-R011</b>		<b>Type: 3546M</b>		<b>Enclosure: TEFC</b>	
<b>Nameplate Data</b>			<b>460 V, 60 Hz: High Voltage Connection</b>		
<b>Rated Output (HP)</b>	3	<b>Full Load Torque</b>	4.5 LB-FT		
<b>Volts</b>	230/460	<b>Start Configuration</b>	direct on line		
<b>Full Load Amps</b>	7.2/3.6	<b>Breakdown Torque</b>	17.2 LB-FT		
<b>R.P.M.</b>	3470	<b>Pull-up Torque</b>	10.5 LB-FT		
<b>Hz</b>	60 <b>Phase</b>	3	<b>Locked-rotor Torque</b>	17 LB-FT	
<b>NEMA Design Code</b>	A <b>KVA Code</b>	P	<b>Starting Current</b>	48.3 A	
<b>Service Factor (S.F.)</b>	1.15	<b>No-load Current</b>	1.25 A		
<b>NEMA Nom. Eff.</b>	86.5 <b>Power Factor</b>	90	<b>Line-line Res. @ 25°C</b>	3.47 Ω	
<b>Rating - Duty</b>	40C AMB-CONT	<b>Temp. Rise @ Rated Load</b>	63°C		
<b>S.F. Amps</b>		<b>Temp. Rise @ S.F. Load</b>	74°C		
		<b>Locked-rotor Power Factor</b>	42.3		
		<b>Rotor inertia</b>	0.127 LB-FT <sup>2</sup>		

**Load Characteristics 460 V, 60 Hz, 3 HP**

<b>% of Rated Load</b>	<b>25</b>	<b>50</b>	<b>75</b>	<b>100</b>	<b>125</b>	<b>150</b>	<b>S.F.</b>
<b>Power Factor</b>	59	79	87	90	91	90	91
<b>Efficiency</b>	80.1	86.4	87.3	86.9	85.7	83.9	86.2
<b>Speed</b>	3567	3541	3510	3479	3443	3403	3457
<b>Line amperes</b>	1.53	2.07	2.78	3.55	4.42	5.4	4.07

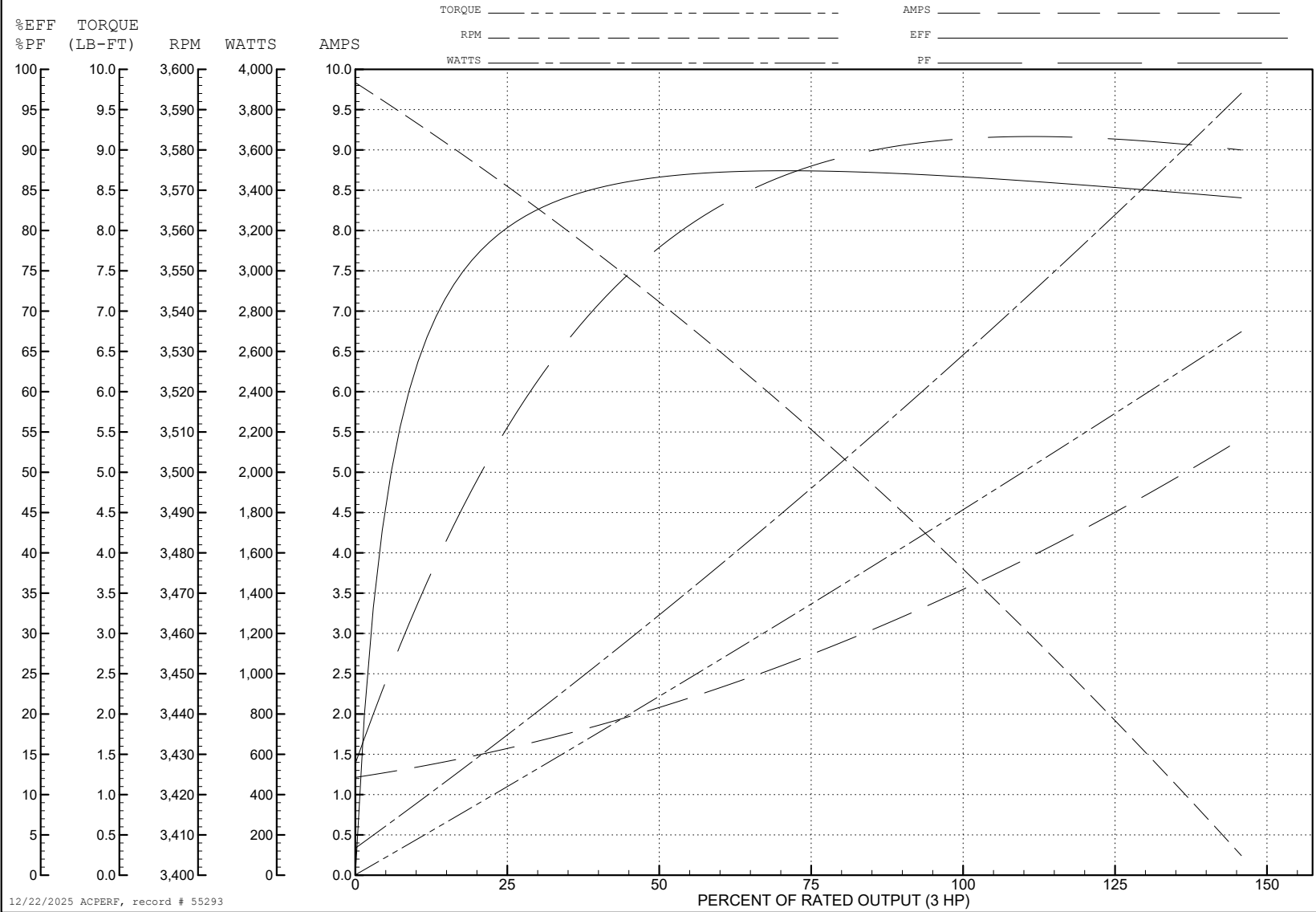
ABB Motors and Mechanical Inc.

WINDING # 35WGR930

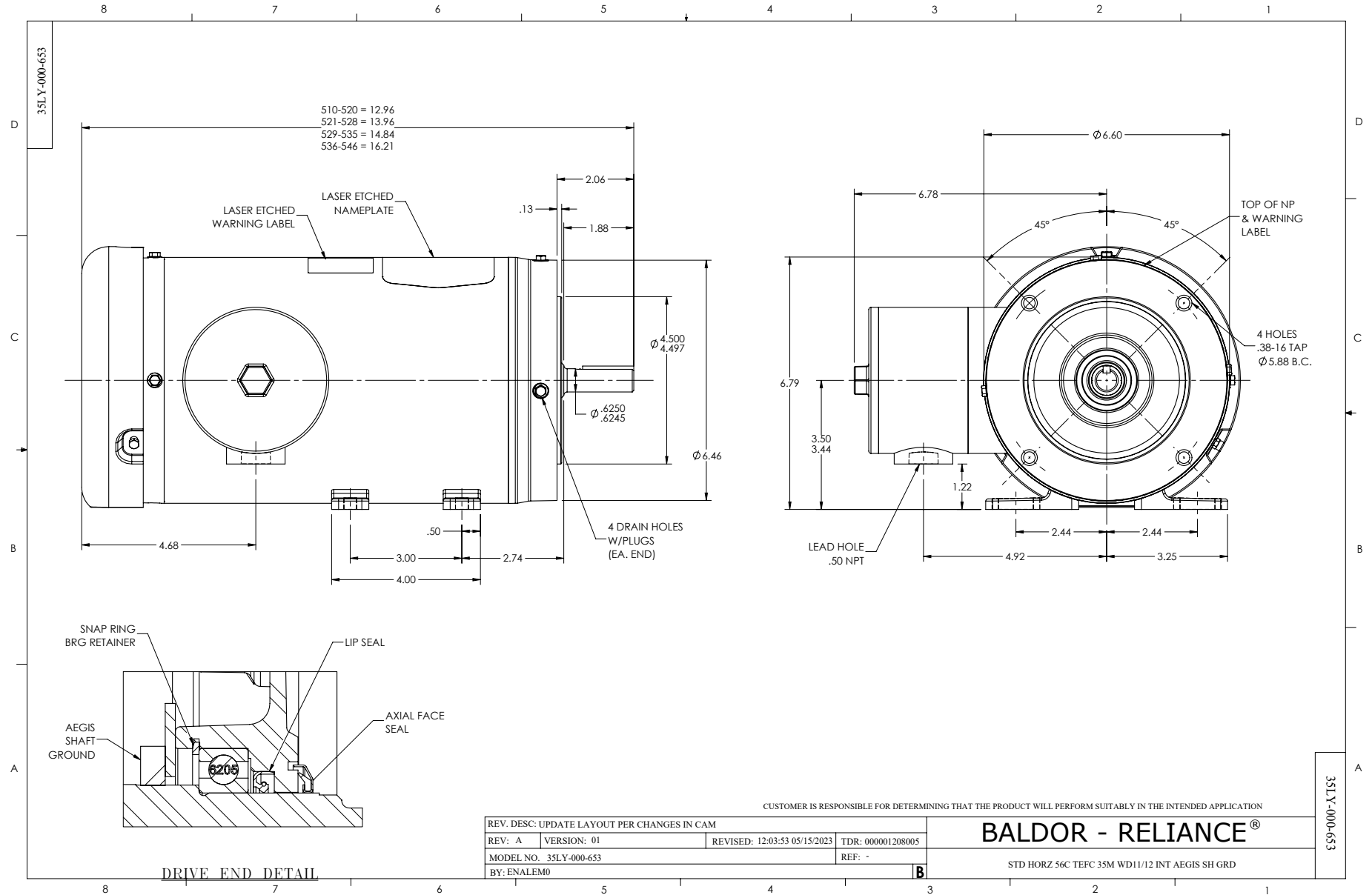
3 HP 3 PH 60 HZ 3470 RPM 460 V 3546M

Typical performance - not guaranteed values.

TORQUES (LB-FT): PO=17.2 PU=10.5 LR=17 LRA=48.3



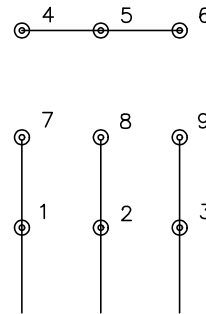
12/22/2025 ACPERF, record # 55293



CD0005

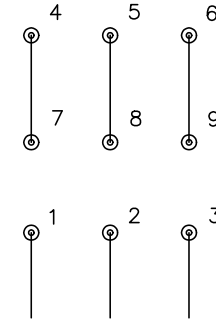


LOW VOLTAGE  
(2Y)



LINE

HIGH VOLTAGE  
(1Y)



LINE

NOTES:

1. INTERCHANGE ANY TWO LINE LEADS TO REVERSE ROTATION.
2. OPTIONAL THERMOSTATS ARE PROVIDED WHEN SPECIFIED.
3. ACTUAL NUMBER OF INTERNAL PARALLEL CIRCUITS MAY BE A MULTIPLE OF THOSE SHOWN ABOVE.
4. LEAD COLORS ARE OPTIONAL. LEADS MUST ALWAYS BE NUMBERED AS SHOWN.

CD0005

REV. DESC: REVISE TO SHOW OPTIONAL COLORS			
REV. LTR: E	BY: JLP	REVISED: 01/19/99 10:15	TDR: 0171435
S00000		FILE: AAA00005140	MDL: -
		MTL: -	

**BALDOR ELECTRIC Co.**

3PH, DV, 9 LEADS