



Customer information packet

CFSWDM23994T-E

15HP, 3540RPM, 3PH, 60HZ, 254TC, TEFC, F1

Class - None

Division - Not Applicable

Specifications

Enclosure	TEFC
Frame	254TC
Frame Material	Stainless Steel
Frequency	60.00 Hz
Haz Area Class and Group	None
Haz Area Division	Not Applicable
Motor Letter Type	Three Phase
Output @ Frequency	15.000 HP @ 60 HZ
Phase	3
Synchronous Speed @ Frequency	3600 RPM @ 60 HZ
Voltage @ Frequency	230.0 V @ 60 HZ 460.0 V @ 60 HZ
Agency Approvals	CSA UR NEMA PREMIUM
Ambient Temperature	40 °C
Auxiliary Box	NO AUXILLARY BOX
Auxiliary Box Lead Termination	None
Base Indicator	Rigid
Bearing Grease Type	POLYREX SHC102 EM (-20F +356F)
Blower	None
Current @ Voltage	34.000 A @ 230.0 V 17.000 A @ 460.0 V
Design Code	A
Drip Cover	No Drip Cover
Duty Rating	CONT
Efficiency @ 100% Load	91.0 %
Electrically Isolated Bearing	Not Electrically Isolated
Feedback Device	NO FEEDBACK
Heater Indicator	No Heater
High Voltage Full Load Amps	17.0 a
Insulation Class	H

Part detail

Revision	P
Type	AC
Mech. spec.	
Base	
Status	PRD/A
Elec. spec.	39WGY436
Layout	39LYE646
Eff. date	05-02-2022
CD Diagram	CD0005
Poles	02
Leads	9#12
Proprietary	False
Created date	12-18-2019

Inverter Code	Inverter Duty
KVA Code	K
Lifting Lugs	Standard Lifting Lugs
Locked Bearing Indicator	Locked Bearing
Motor Lead Termination	Flying Leads
Motor Standards	NEMA
Motor Type	3952M
Mounting Arrangement	F1
Number of Poles	2
Overall Length	24.18 IN
Power Factor	90
Product Family	WD All SS Encapsulated
Pulley Face Code	C-Face
Rodent Screen	None
Service Factor	1.00
Shaft Diameter	1.625 IN
Shaft Ground Indicator	No Shaft Grounding
Shaft Rotation	Reversible
Speed	3540 rpm
Speed Code	Single Speed
Starting Method	Direct on line
Thermal Device - Bearing	None
Thermal Device - Winding	None
Vibration Sensor Indicator	No Vibration Sensor
Winding Thermal 1	None
Winding Thermal 2	None

Nameplate

NP1953L01									
CAT.NO.	CFSWDM23994T-E								
SPEC.	39-0000-0233								
HP	15								
VOLTS	230/460								
AMPS	34/17								
R.P.M.	3540								
FRAME	254TC	HZ	60	PH	3				
SER.F.	1.00	CODE	K	DES.	A	CLASS	H		
NEMA NOM. EFF.	91	P.F.	90						
RATING	40C AMB-CONT								
CC	010A	USABLE AT 208V	N/A						
DE	6309	ODE	6309						
ENCL	TEFC	SN							
	2:1 CT/10:1 VT								

AC Induction Motor Performance Data

Record # 80274

Typical performance - not guaranteed values

Winding: 39WGY436-R001		Type: 3952M	Enclosure: TEFC	
Nameplate Data			460 V, 60 Hz: High Voltage Connection	
Rated Output (HP)	15	Full Load Torque	22.36 LB-FT	
Volts	230/460	Start Configuration	direct on line	
Full Load Amps	34/17	Breakdown Torque	110 LB-FT	
R.P.M.	3540	Pull-up Torque	44.53 LB-FT	
Hz	60 Phase	3	Locked-rotor Torque	53.82 LB-FT
NEMA Design Code	A KVA Code	K	Starting Current	153 A
Service Factor (S.F.)	1	No-load Current	4.89 A	
NEMA Nom. Eff.	91 Power Factor	90	Line-line Res. @ 25°C	0.447 Ω
Rating - Duty	40C AMB-CONT		Temp. Rise @ Rated Load	68°C
			Locked-rotor Power Factor	27.2
			Rotor inertia	1.33 lb-ft ²

Load Characteristics 460 V, 60 Hz, 15 HP

% of Rated Load	25	50	75	100	125	150
Power Factor	65	82	88	91	92	92
Efficiency	83.8	89.5	91.1	91.3	91	90.3
Speed	3584	3569	3553	3536	3518	3499
Line amperes	6.63	9.59	13.23	17	21.13	25.36

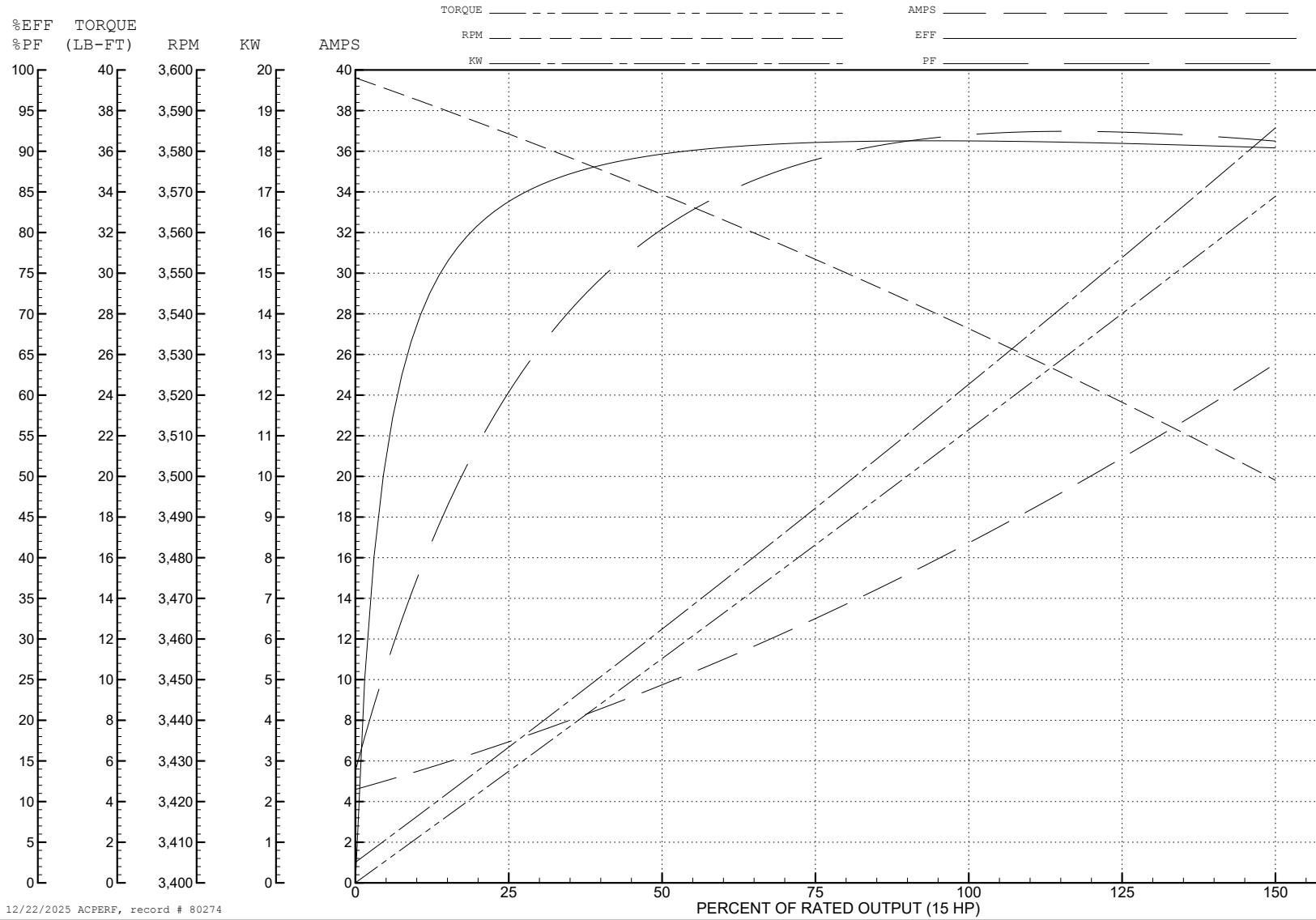
ABB Motors and Mechanical Inc.

WINDING # 39WGY436

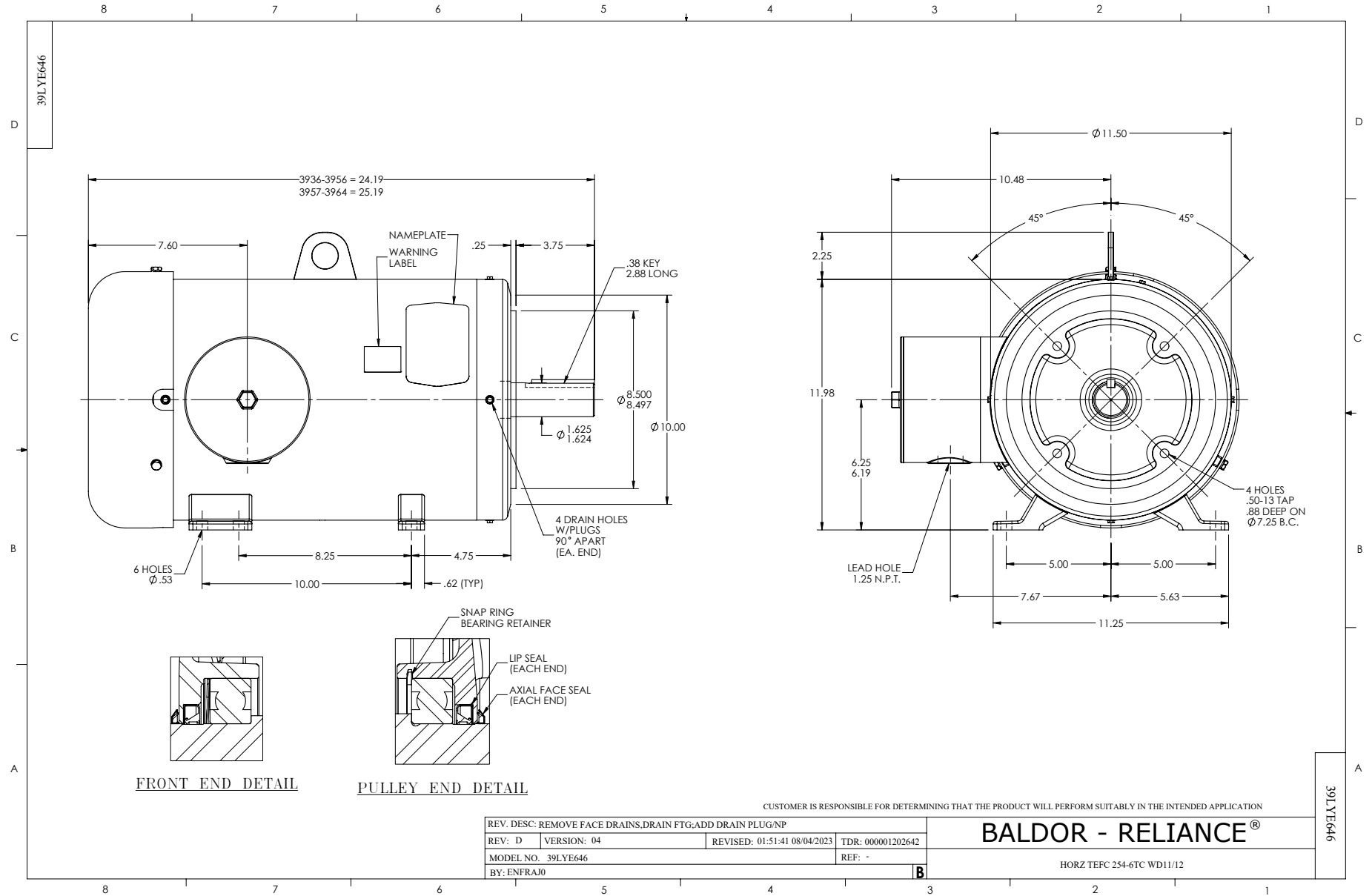
Typical performance - not guaranteed values.

15 HP 3 PH 60 HZ 3540 RPM 460 V 3952M

TORQUES (LB-FT): PO=110 PU=44.53 LR=53.82 LRA=153



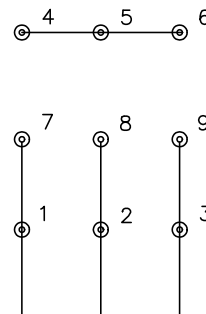
12/22/2025 ACPERF, record # 80274



CD0005



LOW VOLTAGE
(2Y)



LINE

HIGH VOLTAGE
(1Y)



LINE

NOTES:

1. INTERCHANGE ANY TWO LINE LEADS TO REVERSE ROTATION.
2. OPTIONAL THERMOSTATS ARE PROVIDED WHEN SPECIFIED.
3. ACTUAL NUMBER OF INTERNAL PARALLEL CIRCUITS MAY BE A MULTIPLE OF THOSE SHOWN ABOVE.
4. LEAD COLORS ARE OPTIONAL. LEADS MUST ALWAYS BE NUMBERED AS SHOWN.

CD0005

REV. DESC: REVISE TO SHOW OPTIONAL COLORS			
REV. LTR: E	BY: JLP	REVISED: 01/19/99 10:15	TDR: 0171435
S00000		FILE: AAA00005140	MDL: -
		MTL: -	

BALDOR ELECTRIC Co.

3PH, DV, 9 LEADS