



Customer information packet

CEM3556T-G

1HP, 1170RPM, 3PH, 60HZ, 145TC, 3526M, TEFC, F1

Class - None

Division - Not Applicable

Specifications

| | |
|--------------------------------|--|
| Enclosure | TEFC |
| Frame | 145TC |
| Frame Material | Steel |
| Frequency | 60.00 Hz |
| Haz Area Class and Group | None |
| Haz Area Division | Not Applicable |
| Motor Letter Type | Three Phase |
| Output @ Frequency | 1.000 HP @ 60 HZ |
| Phase | 3 |
| Synchronous Speed @ Frequency | 1200 RPM @ 60 HZ |
| Voltage @ Frequency | 230.0 V @ 60 HZ 460.0 V @ 60 HZ |
| Agency Approvals | CSA EEV NEMA PREMIUM UR |
| Ambient Temperature | 40 °C |
| Auxiliary Box | NO AUXILLARY BOX |
| Auxiliary Box Lead Termination | None |
| Base Indicator | Rigid |
| Bearing Grease Type | Polyrex EM (-20F +300F) |
| Blower | None |
| Current @ Voltage | 1.500 A @ 460.0 V 3.000 A @ 230.0 V |
| Design Code | B |
| Drip Cover | No Drip Cover |
| Duty Rating | CONT |
| Efficiency @ 100% Load | 82.5 % |
| Electrically Isolated Bearing | Not Electrically Isolated |
| Feedback Device | NO FEEDBACK |
| Front Shaft Indicator | None |
| Heater Indicator | No Heater |
| High Voltage Full Load Amps | 1.5 a |

Part detail

| | |
|--------------|------------|
| Revision | D |
| Type | AC |
| Mech. spec. | 35E2179 |
| Base | |
| Status | PRD/A |
| Elec. spec. | 35WGG019 |
| Layout | 35LYE2179 |
| Eff. date | 06-25-2025 |
| CD Diagram | CD0005 |
| Poles | 06 |
| Leads | 9#18 |
| Proprietary | False |
| Created date | 02-23-2023 |

| | |
|--------------------------------------|---------------------|
| Insulation Class | H |
| Inverter Code | Inverter Duty |
| KVA Code | J |
| Lifting Lugs | No Lifting Lugs |
| Locked Bearing Indicator | Locked Bearing |
| Motor Lead Quantity/Wire Size | 9 @ 18 AWG |
| Motor Lead Termination | Flying Leads |
| Motor Standards | NEMA |
| Motor Type | 3526M |
| Mounting Arrangement | F1 |
| Number of Poles | 6 |
| Overall Length | 13.29 IN |
| Power Factor | 67 |
| Product Family | General Purpose |
| Pulley End Bearing Type | Ball |
| Pulley Face Code | C-Face |
| Pulley Shaft Indicator | Standard |
| Rodent Screen | None |
| Service Factor | 1.15 |
| Shaft Diameter | 0.875 IN |
| Shaft Ground Indicator | Shaft Grounding |
| Shaft Rotation | Reversible |
| Speed | 1170 rpm |
| Speed Code | Single Speed |
| Starting Method | Direct on line |
| Thermal Device - Bearing | None |
| Thermal Device - Winding | None |
| Vibration Sensor Indicator | No Vibration Sensor |
| Winding Thermal 1 | None |
| Winding Thermal 2 | None |

Nameplate

NP3441LUA

| | | | | | | | |
|-----------------------------------|------------------------|-------------|------|------------|---|--------------|-------|
| CAT.NO. | CEM3556T-G | | | | | | |
| SPEC | 35E2179G019 | | | | | | |
| HP | 1 | | | | | | |
| VOLTS | 230/460 | | | | | | |
| AMPS | 3/1.5 | | | | | | |
| RPM | 1170 | | | | | | |
| FRAME | 145TC | HZ | 60 | PH | 3 | | |
| SF | 1.15 | CODE | J | DES | B | CLASS | H |
| NEMA NOM. EFF | 82.5 | PF | 67 | | | | |
| RATING | 40C AMB-CONT | | | | | | |
| CC | 010A | | | | | | |
| ENCL | TEFC | SER | | | | | |
| DE | 6205 | ODE | 6203 | | | | |
| VPWM INVERTER READY | SFA 3.7/1.85 | | | | | | |
| CT6-60H(10:1)VT3-60H(20:1) | 50HZ 1HP 190/380V 4/2A | | | | | | SF1.0 |

AC Induction Motor Performance Data

Record # 53334

Typical performance - not guaranteed values

| Winding: 35WGM497-R064 | | Type: 3526M | | Enclosure: TEFC | |
|-------------------------------|------|---------------------|--|----------------------------------|--------------------------|
| Nameplate Data | | | 460 V, 60 Hz: High Voltage Connection | | |
| Rated Output (HP) | | 1 | Full Load Torque | | 4.51 LB-FT |
| Volts | | 230/460 | Start Configuration | | direct on line |
| Full Load Amps | | 3.6/1.8 | Breakdown Torque | | 15.3 LB-FT |
| R.P.M. | | 1155 | Pull-up Torque | | 11.1 LB-FT |
| Hz | 60 | Phase | 3 | Locked-rotor Torque | 11.9 LB-FT |
| NEMA Design Code | B | KVA Code | K | Starting Current | 10.8 A |
| Service Factor (S.F.) | | 1.15 | No-load Current | | 1.21 A |
| NEMA Nom. Eff. | 82.5 | Power Factor | 64 | Line-line Res. @ 25°C | 16.1 Ω |
| Rating - Duty | | 40C | AMB-CONT | Temp. Rise @ Rated Load | 47°C |
| S.F. Amps | | | | Temp. Rise @ S.F. Load | 56°C |
| | | | | Locked-rotor Power Factor | 42 |
| | | | | Rotor inertia | 0.155 LB-FT ² |

Load Characteristics 460 V, 60 Hz, 1 HP

| % of Rated Load | 25 | 50 | 75 | 100 | 125 | 150 | S.F. |
|------------------------|-----------|-----------|-----------|------------|------------|------------|-------------|
| Power Factor | 27 | 43 | 55 | 64 | 70 | 75 | 68 |
| Efficiency | 69.3 | 79.4 | 82.1 | 82.8 | 82.1 | 80.5 | 82.4 |
| Speed | 1190 | 1181 | 1170 | 1159 | 1146 | 1130 | 1151 |
| Line amperes | 1.25 | 1.36 | 1.53 | 1.75 | 2.02 | 2.33 | 1.91 |

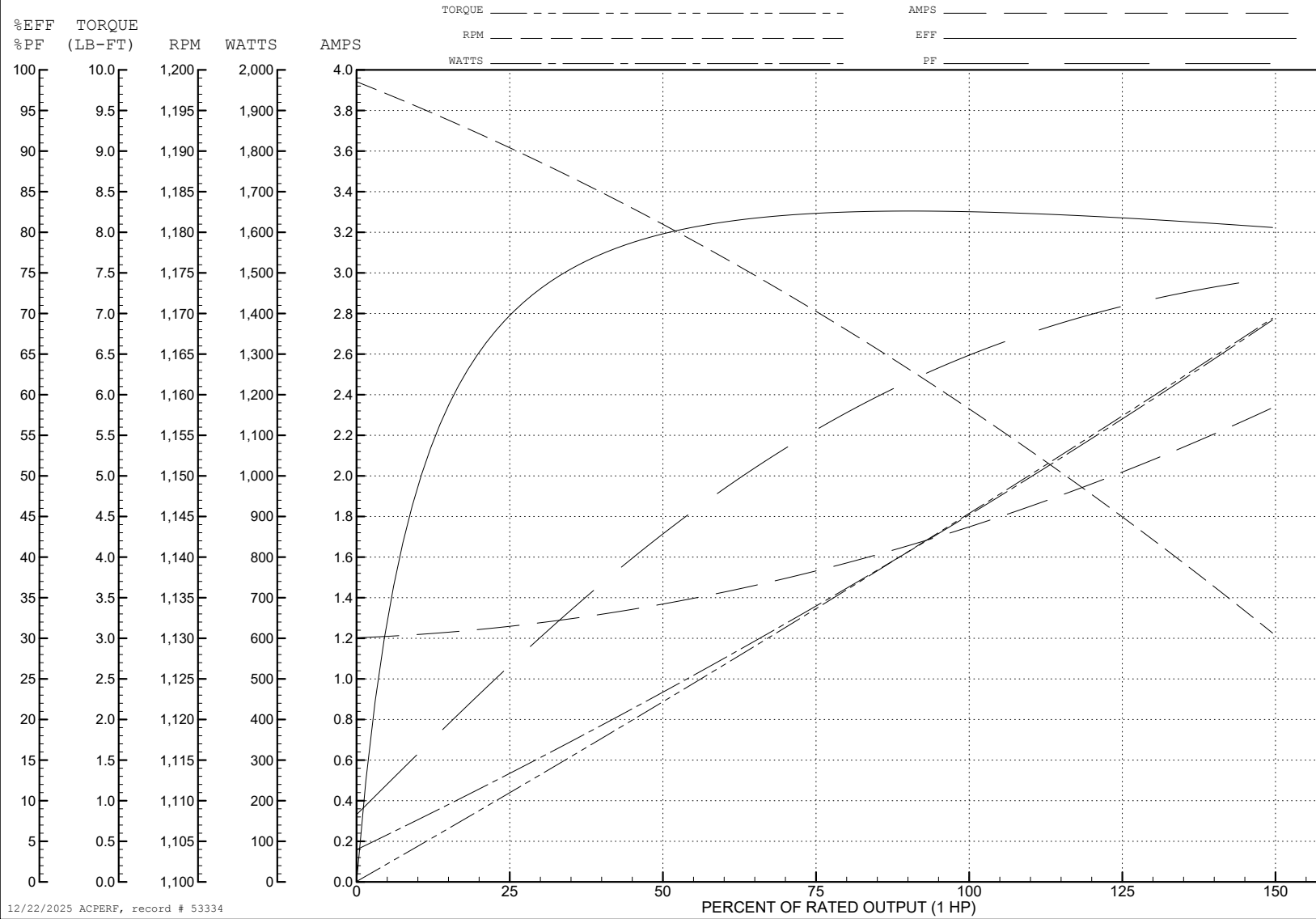
ABB Motors and Mechanical Inc.

WINDING # 35WGM497

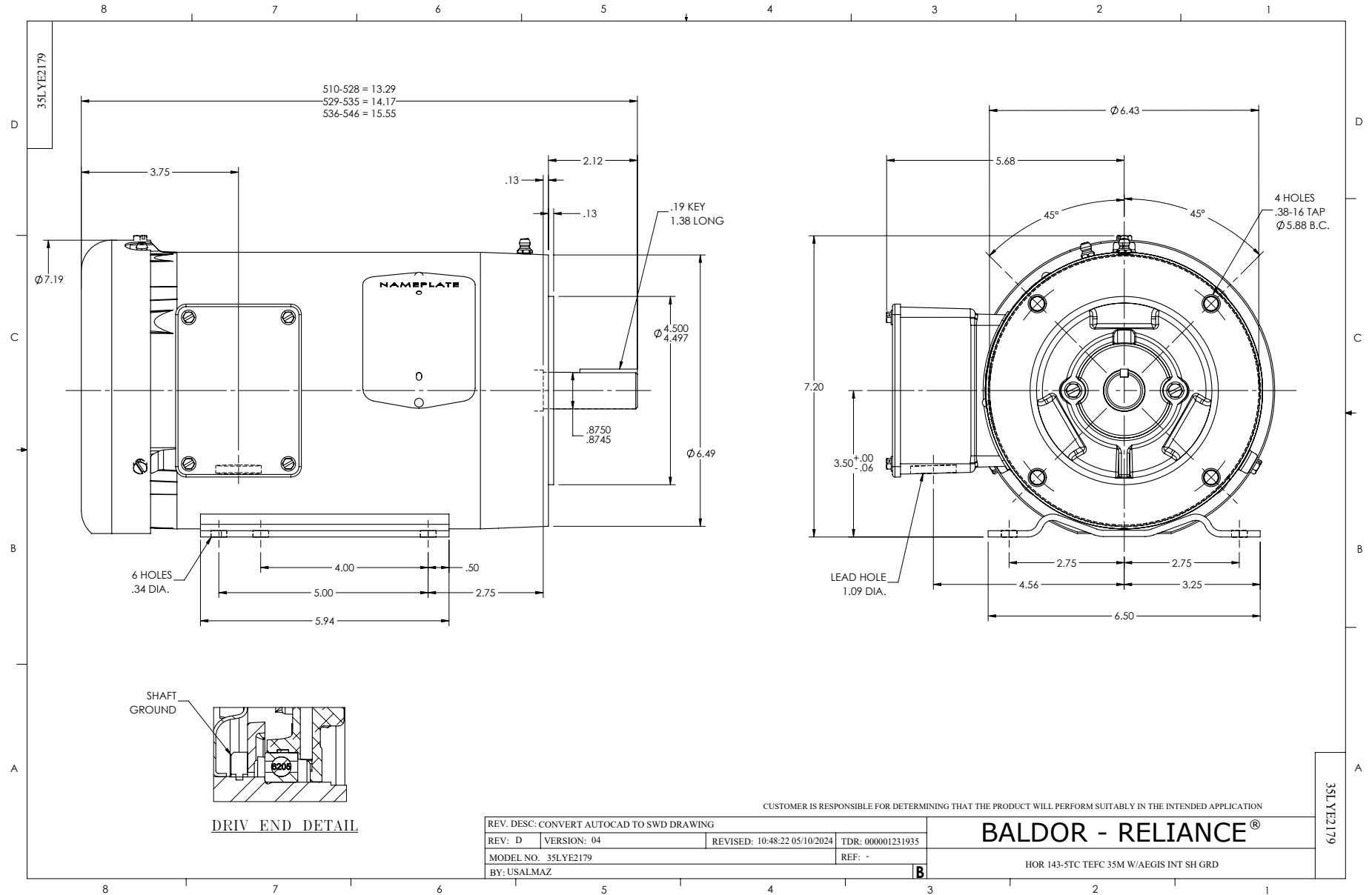
Typical performance - not guaranteed values.

1 HP 3 PH 60 HZ 1155 RPM 460 V 3526M

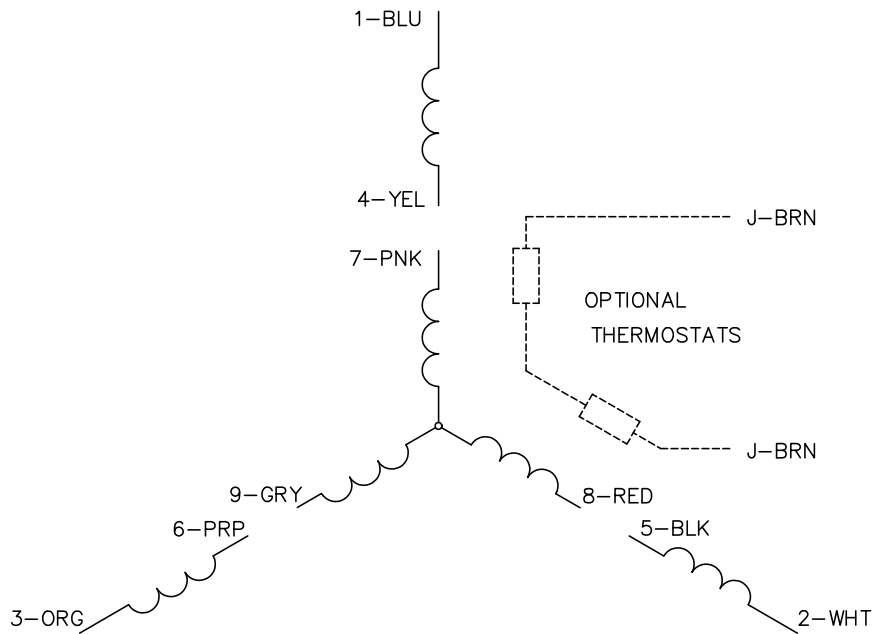
TORQUES (LB-FT): PO=15.3 PU=11.1 LR=11.9 LRA=10.8



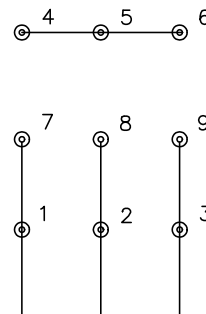
12/22/2025 ACPERF, record # 53334



CD0005



LOW VOLTAGE
(2Y)



LINE

HIGH VOLTAGE
(1Y)



LINE

NOTES:

1. INTERCHANGE ANY TWO LINE LEADS TO REVERSE ROTATION.
2. OPTIONAL THERMOSTATS ARE PROVIDED WHEN SPECIFIED.
3. ACTUAL NUMBER OF INTERNAL PARALLEL CIRCUITS MAY BE A MULTIPLE OF THOSE SHOWN ABOVE.
4. LEAD COLORS ARE OPTIONAL. LEADS MUST ALWAYS BE NUMBERED AS SHOWN.

CD0005

| | | | |
|---|---------|-------------------------|--------------|
| REV. DESC: REVISE TO SHOW OPTIONAL COLORS | | | |
| REV. LTR: E | BY: JLP | REVISED: 01/19/99 10:15 | TDR: 0171435 |
| S00000 | | FILE: AAA00005140 | MDL: - |
| | | MTL: - | |

BALDOR ELECTRIC Co.

3PH, DV, 9 LEADS