



---

# Customer information packet

## CEM3305T-G

3HP, 1165RPM, 3PH, 60HZ, 213TC, 3734M, OPSB, F1

Class - None

Division - Not Applicable

## Specifications

|                                |   |
|--------------------------------|---|
| Enclosure                      | OPSB  |
| Frame                          | 213TC   |
| Frame Material                 | Steel   |
| Frequency                      | 60.00 Hz  |
| Haz Area Class and Group       | None  |
| Haz Area Division              | Not Applicable  |
| Motor Letter Type              | Three Phase   |
| Output @ Frequency             | 3.000 HP @ 60 HZ  |
| Phase                          | 3   |
| Synchronous Speed @ Frequency  | 1200 RPM @ 60 HZ  |
| Voltage @ Frequency            | 230.0 V @ 60 HZ<br>460.0 V @ 60 HZ                        |
| Agency Approvals               | CSA EEV<br>CURUSEEV<br>NEMA PREMIUM<br>NEMA_PREMIUM<br>UR |
| Ambient Temperature            | 40 °C   |
| Auxiliary Box                  | NO AUXILLARY BOX  |
| Auxiliary Box Lead Termination | None  |
| Base Indicator                 | Rigid   |
| Bearing Grease Type            | Polyrex EM (-20F +300F)                                   |
| Blower                         | None  |
| Current @ Voltage              | 9.000 A @ 230.0 V<br>4.500 A @ 460.0 V                    |
| Design Code                    | B   |
| Drip Cover                     | No Drip Cover   |
| Duty Rating                    | CONT  |
| Efficiency @ 100% Load         | 88.5 %  |
| Electrically Isolated Bearing  | Not Electrically Isolated                                 |
| Feedback Device                | NO FEEDBACK   |
| Heater Indicator               | No Heater   |

## Part detail

|              |            |
|--------------|------------|
| Revision     | E          |
| Type         | AC         |
| Mech. spec.  |            |
| Base         |            |
| Status       | PRD/A      |
| Elec. spec.  | 37WGR333   |
| Layout       | 37LYK447   |
| Eff. date    | 06-11-2024 |
| CD Diagram   | CD0005     |
| Poles        | 06         |
| Leads        | 9#14       |
| Proprietary  | False      |
| Created date | 02-24-2020 |

|                             |                       |
|-----------------------------|-----------------------|
| High Voltage Full Load Amps | 4.5 a                 |
| Insulation Class            | H                     |
| Inverter Code               | Inverter Ready        |
| IP Rating                   | NONE                  |
| KVA Code                    | K                     |
| Lifting Lugs                | Standard Lifting Lugs |
| Locked Bearing Indicator    | Locked Bearing        |
| Motor Lead Termination      | Flying Leads          |
| Motor Standards             | NEMA                  |
| Motor Type                  | 3734M                 |
| Mounting Arrangement        | F1                    |
| Number of Poles             | 6                     |
| Overall Length              | 17.07 IN              |
| Power Factor                | 70                    |
| Product Family              | General Purpose       |
| Pulley Face Code            | C-Face                |
| Rodent Screen               | None                  |
| Service Factor              | 1.15                  |
| Shaft Diameter              | 1.375 IN              |
| Shaft Ground Indicator      | Shaft Grounding       |
| Shaft Rotation              | Reversible            |
| Speed                       | 1165 rpm              |
| Speed Code                  | Single Speed          |
| Starting Method             | Direct on line        |
| Thermal Device - Bearing    | None                  |
| Thermal Device - Winding    | None                  |
| Vibration Sensor Indicator  | No Vibration Sensor   |
| Winding Thermal 1           | None                  |
| Winding Thermal 2           | None                  |

**Nameplate**

**NP3553LUA**

|                                  |              |             |           |            |   |              |   |
|----------------------------------|--------------|-------------|-----------|------------|---|--------------|---|
| <b>CAT.NO.</b>                   | CEM3305T-G   |             |           |            |   |              |   |
| <b>SPEC.</b>                     | 37-0000-0218 |             |           |            |   |              |   |
| <b>HP</b>                        | 3            |             |           |            |   |              |   |
| <b>VOLTS</b>                     | 230/460      |             |           |            |   |              |   |
| <b>AMPS</b>                      | 9/4.5        |             |           |            |   |              |   |
| <b>RPM</b>                       | 1165         |             |           |            |   |              |   |
| <b>FRAME</b>                     | 213TC        |             | <b>HZ</b> | 60         |   | <b>PH</b>    | 3 |
| <b>SF</b>                        | 1.15         | <b>CODE</b> | K         | <b>DES</b> | B | <b>CLASS</b> | H |
| <b>NEMA NOM. EFF</b>             | 88.5         | <b>PF</b>   | 70        |            |   |              |   |
| <b>RATING</b>                    | 40C AMB-CONT |             |           |            |   |              |   |
| <b>CC</b>                        | 010A         |             |           |            |   |              |   |
| <b>ENCL</b>                      | OPSB         | <b>SN</b>   |           |            |   |              |   |
| <b>DE</b>                        | 6307         | <b>ODE</b>  | 6206      |            |   |              |   |
| <b>VPWM INVERTER READY</b>       |              |             |           |            |   |              |   |
| <b>CT30-60(2:1) VT3-60(20:1)</b> |              |             |           |            |   |              |   |
| <b>USABLE AT</b>                 | N/A          |             |           |            |   |              |   |

**AC Induction Motor Performance Data**

Record # 53382

Typical performance - not guaranteed values

| <b>Winding:</b> 37WGR333-R006 |                          | <b>Type:</b> 3734M         |  | <b>Enclosure:</b> OPSB   |  |
|-------------------------------|--------------------------|----------------------------|--|--------------------------|--|
| <b>Nameplate Data</b>         |                          |                            | <b>460 V, 60 Hz:<br/>High Voltage Connection</b> |                          |  |
| <b>Rated Output (HP)</b>      | 3                        | <b>Full Load Torque</b>    | 13.59 LB-FT                                      |                          |  |
| <b>Volts</b>                  | 230/460                  | <b>Start Configuration</b> | direct on line                                   |                          |  |
| <b>Full Load Amps</b>         | 9/4.5                    | <b>Breakdown Torque</b>    | 46.48 LB-FT                                      |                          |  |
| <b>R.P.M.</b>                 | 1165                     | <b>Pull-up Torque</b>      | 21.64 LB-FT                                      |                          |  |
| <b>Hz</b>                     | 60 <b>Phase</b>          | 3                          | <b>Locked-rotor Torque</b>                       | 35.84 LB-FT              |  |
| <b>NEMA Design Code</b>       | <b>B KVA Code</b>        | K                          | <b>Starting Current</b>                          | 31.11 A                  |  |
| <b>Service Factor (S.F.)</b>  |                          | 1.15                       | <b>No-load Current</b>                           | 2.38 A                   |  |
| <b>NEMA Nom. Eff.</b>         | 88.5 <b>Power Factor</b> | 71                         | <b>Line-line Res. @ 25°C</b>                     | 3.48 Ω                   |  |
| <b>Rating - Duty</b>          | 40C AMB-CONT             |                            | <b>Temp. Rise @ Rated Load</b>                   | 20°C                     |  |
| <b>S.F. Amps</b>              |                          |                            | <b>Temp. Rise @ S.F. Load</b>                    | 24°C                     |  |
|                               |                          |                            | <b>Locked-rotor Power Factor</b>                 | 25.2                     |  |
|                               |                          |                            | <b>Rotor inertia</b>                             | 0.846 LB-FT <sup>2</sup> |  |

**Load Characteristics 460 V, 60 Hz, 3 HP**

| <b>% of Rated Load</b> | <b>25</b> | <b>50</b> | <b>75</b> | <b>100</b> | <b>125</b> | <b>150</b> | <b>S.F.</b> |
|------------------------|-----------|-----------|-----------|------------|------------|------------|-------------|
| <b>Power Factor</b>    | 34        | 53        | 64        | 71         | 74         | 76         | 73          |
| <b>Efficiency</b>      | 82.9      | 88.4      | 89.4      | 88.9       | 88         | 86.1       | 88.4        |
| <b>Speed</b>           | 1192      | 1185      | 1177      | 1168       | 1158       | 1147       | 1161        |
| <b>Line amperes</b>    | 2.57      | 3.06      | 3.73      | 4.49       | 5.41       | 6.45       | 5.04        |

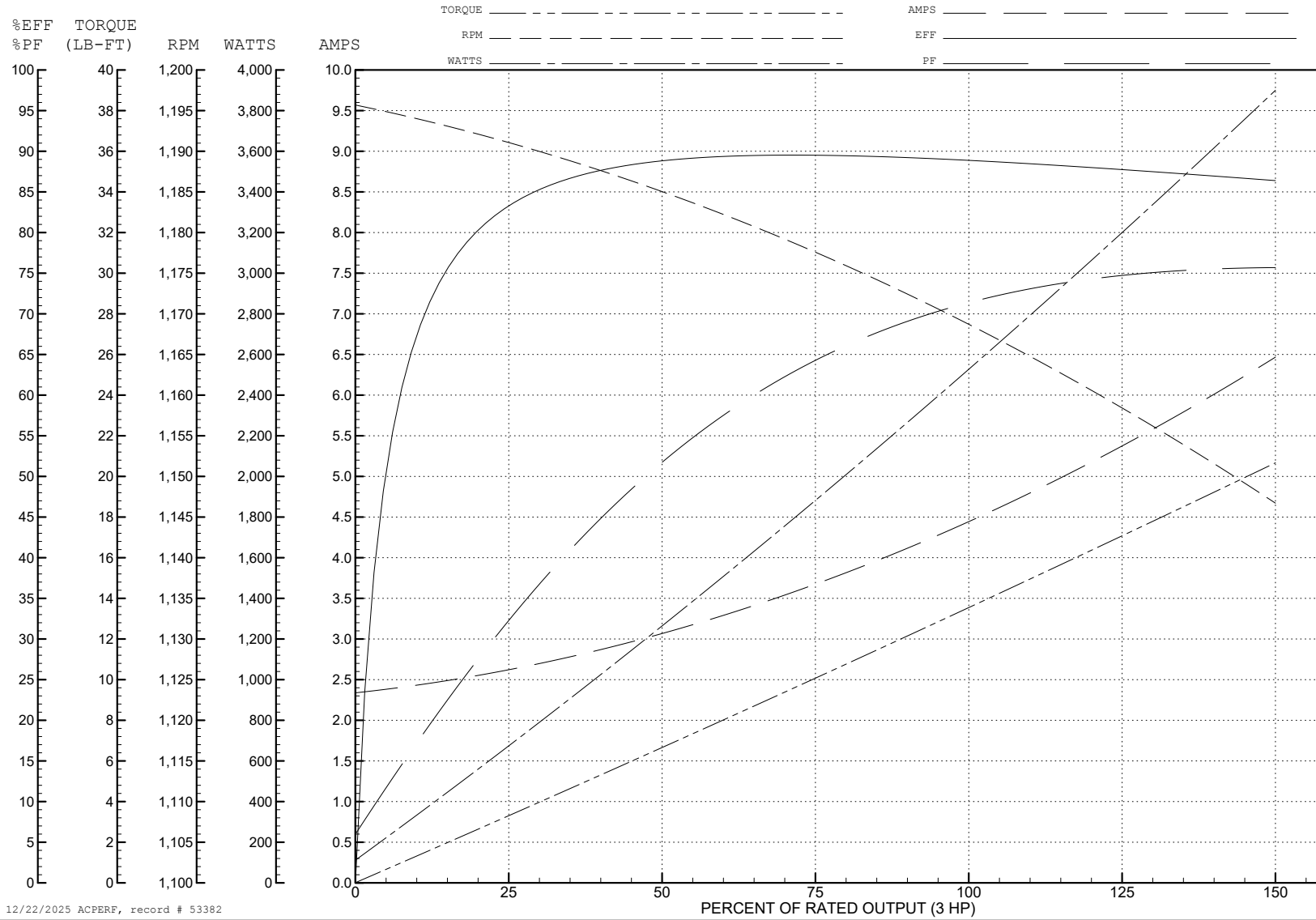
ABB Motors and Mechanical Inc.

WINDING # 37WGR333

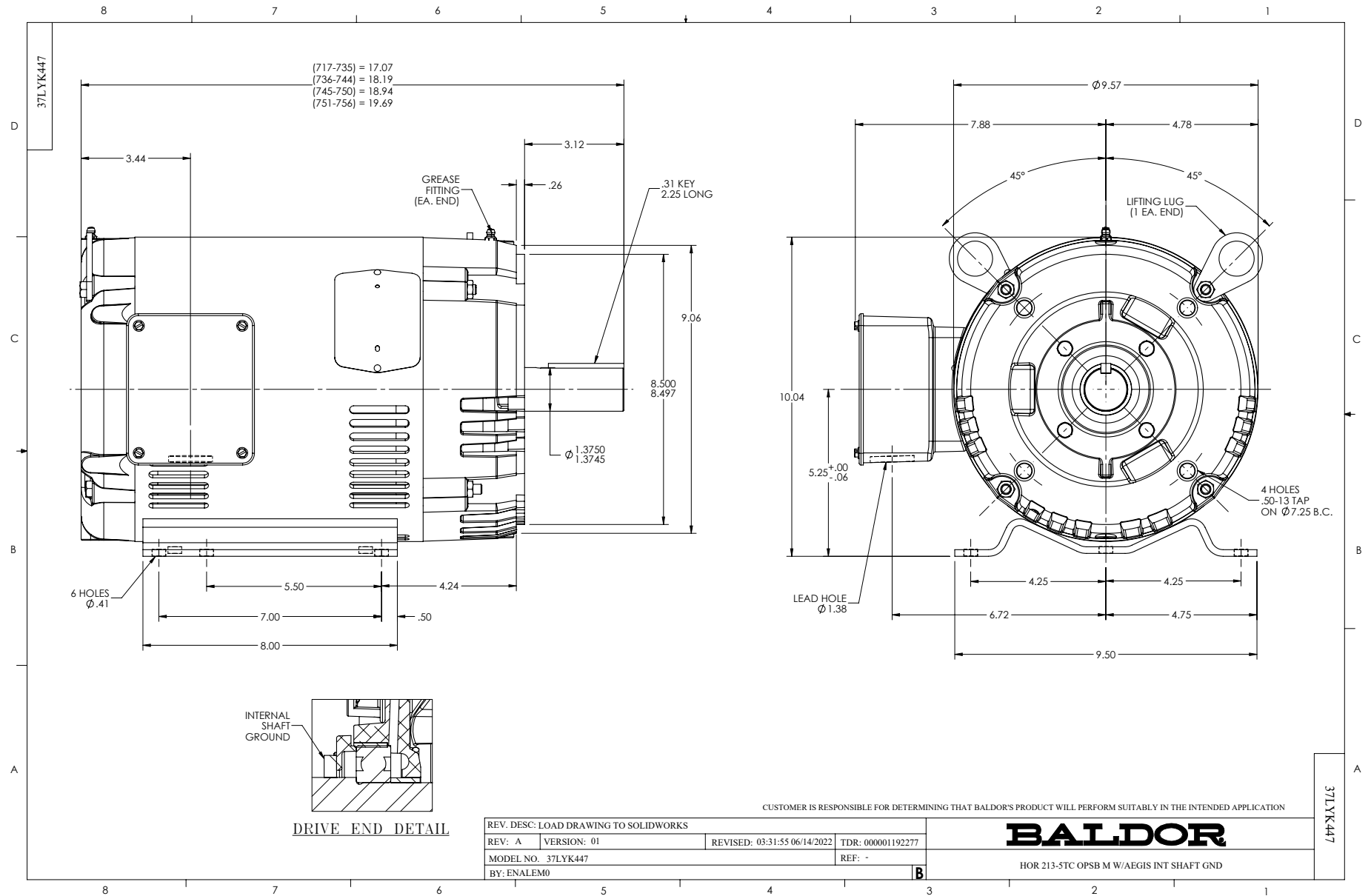
3 HP 3 PH 60 HZ 1165 RPM 460 V 3734M

Typical performance - not guaranteed values.

TORQUES (LB-FT): PO=46.48 PU=21.64 LR=35.84 LRA=31.11



12/22/2025 ACPERF, record # 53382



CD0005

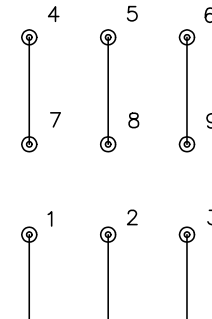


LOW VOLTAGE  
(2Y)



LINE

HIGH VOLTAGE  
(1Y)



LINE

NOTES:

1. INTERCHANGE ANY TWO LINE LEADS TO REVERSE ROTATION.
2. OPTIONAL THERMOSTATS ARE PROVIDED WHEN SPECIFIED.
3. ACTUAL NUMBER OF INTERNAL PARALLEL CIRCUITS MAY BE A MULTIPLE OF THOSE SHOWN ABOVE.
4. LEAD COLORS ARE OPTIONAL. LEADS MUST ALWAYS BE NUMBERED AS SHOWN.

CD0005

|   |         |                         |              |
|---|---------|-------------------------|--------------|
| REV. DESC: REVISE TO SHOW OPTIONAL COLORS |         |                         |              |
| REV. LTR: E                               | BY: JLP | REVISED: 01/19/99 10:15 | TDR: 0171435 |
| S00000                                    |         | FILE: AAA00005140       | MDL: -       |
|   |         | MTL: -                  |              |

**BALDOR ELECTRIC Co.**

3PH, DV, 9 LEADS